

# **REMINDER UPDATE 2 0 270 VA-MISC UPDATE 17 CHANGES**

NOTE: All reminder dialog changes are included in reminder dialog group:  
**VA-GP MISC UPDATE 17**

*Note: To confirm updates made on any 'national' dialog element or group listed below, choose the INQ (Inquiry/Print) option in the Reminder Dialog Management Menu.*

## Table of Contents

1. Reminder Dialog ELEMENT: VA-TXT TWI NURSE WOUND-DRESSING INFO .....	1
2. Reminder Dialog ELEMENT: VA-HERPES ZOSTER GUIDANCE DETAILS .....	2
3. Reminder Dialog ELEMENT: <b>VA-PHQ-2</b> .....	3
4. Reminder GROUPS: VA-NSG SA L/T CENTRAL 1 PREP and VA-NSG SA L/T CENTRAL 2 PREP and VA-GP NSG SA L/T MIDLINE PREP .....	5
5. Reminder Dialog ELEMENT: VA-TXT HCOE CBT RISK INFO MOTOR-EVIDENCE OF .....	10
6. Reminder Dialog ELEMENT: <b>VA-TXT HCOE-HEADACHE #1</b> .....	11
7. Reminder Dialog ELEMENT: VA-HF HCOE CBT DEPRESSION RESULTS-MOD/SEVERE.....	13
8. Reminder TAXONOMY: VA-WH PAP SMEAR SCREEN CODES .....	13
9. Reminder TAXONOMY: VA-WH HYSTERECTOMY W/CERVIX REMOVED .....	14
10. Reminder GROUPS: VA-GP SCI/D BLADDER MGMT STATUS MASTER and VA-GP SCI/D BLADDER MGMT-REVIEW/VERIFY (BL).....	14

## 1. Reminder Dialog ELEMENT: VA-TXT TWI NURSE WOUND-DRESSING INFO

This element resides in the VA-TELEWOUND IMAGER NOTE reminder dialog.

Change Made: The contents of template field |WOUND DRESSINGS| contained two words that are misspelled. “Boarder” should be “Border” and “guaze” should be “gauze”.

**BEFORE:**

Name:	WOUND DRESSINGS		
Type:	Radio Buttons	Field Len: <input type="text"/>	Text Len: <input type="text"/>
Default:			
Items:	Adaptic=Contact Layer Aquacel=Hydrofiber Lyofoam Max=Foam (specifically a high absorptive foam) Mepilex Border=Foam (specifically a multilayer foam with silicone boarder) Moist Gauze=Gauze Tegaderm=Alginate Xeroform=Impregnated Gauze (specifically a petrolatum impregnated guaze with bismuth) Unknown Other:		
Line: 14 Col: 1			
LM Text:			

**AFTER:**

Name:	WOUND DRESSINGS		
Type:	Radio Buttons	Field Len: <input type="text"/>	Text Len: <input type="text"/>
Default:			
Items:	Adaptic=Contact Layer Aquacel=Hydrofiber Lyofoam Max=Foam (specifically a high absorptive foam) Mepilex Border=Foam (specifically a multilayer foam with silicone border) Moist Gauze=Gauze Tegaderm=Alginate Xeroform=Impregnated Gauze (specifically a petrolatum impregnated gauze with bismuth) Unknown Other:		
Line: 7 Col: 70			
LM Text:			

## 2. Reminder Dialog ELEMENT: VA-HERPES ZOSTER GUIDANCE DETAILS

This element resides in the VA-HERPES ZOSTER VACCINE reminder dialog.

Change Made: The contents of template field [NCP HERPES ZOSTER DETAILED GUIDANCE] contained a wording change; from “may be vaccinated” to “should be vaccinated”.

**BEFORE:**

Name:	NCP HERPES ZOSTER DETAILED GUIDANCE		
Type:	Text	Field Len: <input type="text"/>	Text Len: <input type="text"/>
Items:	<p>RECOMMENDATION:</p> <p>The CDC recommends recombinant zoster vaccine (Shingrix, RZV) for:</p> <ul style="list-style-type: none"> <li>- all adults aged 50 and older and</li> <li>- adults aged 19 and older who have or will have a condition or treatment that causes significant immunocompromise.</li> </ul> <p>The vaccine is given as 2 doses. The 2nd dose is given 2-6 months after the first dose. Patients <u>previously vaccinated with Herpes zoster virus live vaccine (Zostavax,ZVL)</u> <u>may be revaccinated</u> with the recombinant zoster vaccine (Shingrix,RZV).</p>		
Line: 9			
Col: 40			
LM Text:			

**AFTER:**

Name:	NCP HERPES ZOSTER DETAILED GUIDANCE		
Type:	Text	Field Len: <input type="text"/>	Text Len: <input type="text"/>
Items:	<p>RECOMMENDATION:</p> <p>The CDC recommends recombinant zoster vaccine (Shingrix, RZV) for:</p> <ul style="list-style-type: none"> <li>- all adults aged 50 and older and</li> <li>- adults aged 19 and older who have or will have a condition or treatment that causes significant immunocompromise.</li> </ul> <p>The vaccine is given as 2 doses. The 2nd dose is given 2-6 months after the first dose. Patients <u>previously vaccinated with Herpes zoster virus live vaccine (Zostavax,ZVL)</u> <u>should be revaccinated</u> with the recombinant zoster vaccine (Shingrix,RZV).</p>		
Line: 74			
Col: 1			
LM Text:			

### 3. Reminder Dialog ELEMENT: VA-PHQ-2

This element resides in the VA-DEPRESSION SCREEN reminder dialog.

Change Made: The MH TEST REQUIRED field has been set to “Required open and required complete before finish”, to require the PHQ-2 answers be completed before finishing the dialog.

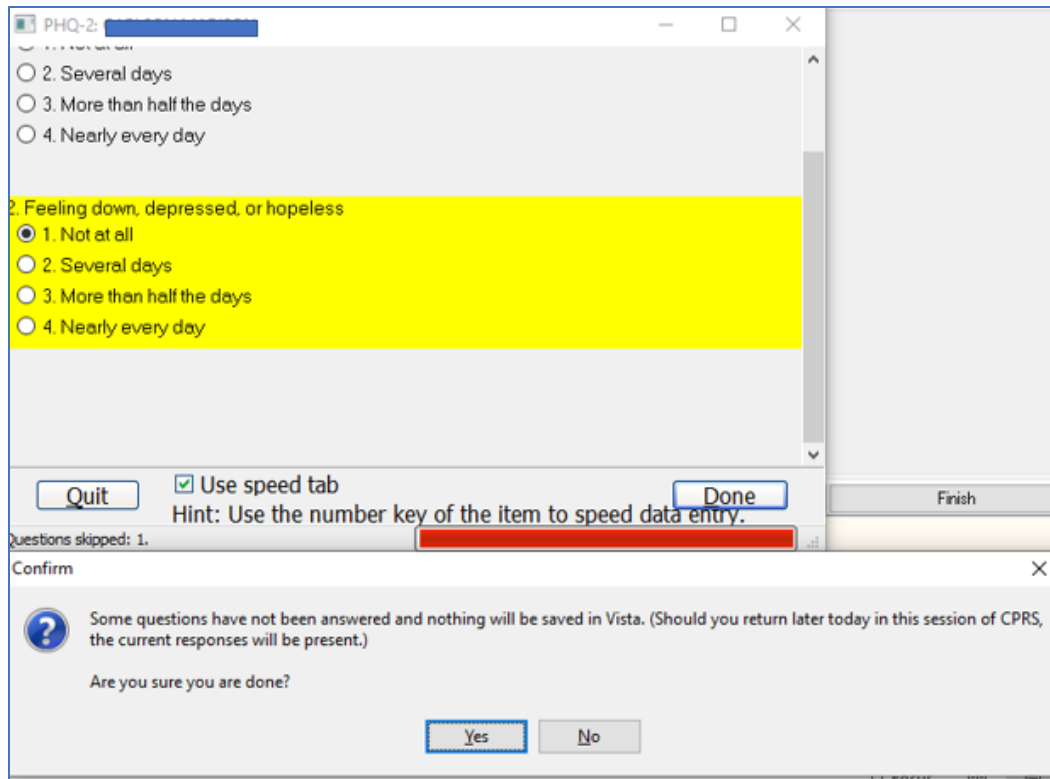
**BEFORE:**

NAME: VA-PHQ-2//  
DISABLE:  
CLASS: NATIONAL//  
Finding item: MH PHQ-2  
FINDING ITEM: PHQ-2//  
Select RESULT GROUP: PXRМ PHQ2 RESULT GROUP//  
RESULT GROUP: PXRМ PHQ2 RESULT GROUP//  
Select RESULT GROUP:  
EXCLUDE MH TEST FROM PN TEXT: NO//

**MH TEST REQUIRED:**

**AFTER:**

NAME: VA-PHQ-2//  
DISABLE:  
CLASS: NATIONAL//  
SPONSOR:  
Finding item: MH PHQ-2  
FINDING ITEM: PHQ-2//  
Select RESULT GROUP: PXRМ PHQ2 RESULT GROUP//  
RESULT GROUP: PXRМ PHQ2 RESULT GROUP//  
Select RESULT GROUP:  
EXCLUDE MH TEST FROM PN TEXT: NO//  
**MH TEST REQUIRED:** Required open and required complete before finish



#### 4. Reminder GROUPS: VA-NSG SA L/T CENTRAL 1 PREP and VA-NSG SA L/T CENTRAL 2 PREP and VA-GP NSG SA L/T MIDLINE PREP

Change Made: The elements were updated in the Insertion preparation section in the VAAES NSG IV Insertion and Maintenance note template. New selection options were added, along with mapped Health Factors.

These groups resides in the **VA-AES NSG IV INSERT AND MAINTAIN** reminder dialog.

**BEFORE:**

Group: **VA-NSG SA L/T CENTRAL 1 PREP**

Text: Insertion preparation:  
[NO BOX, NO SUPPRESS, SHOW, NO SELECTION]

Element: VA-NSG L/T CL1 PREP-INSTRUCTIONS

Text: - Hand hygiene performed  
- Cap worn by inserter  
- Sterile glove worn by inserter  
- Sterile gown worn by inserter  
- Mask worn by all present  
- Draped patient in sterile fashion with large full body fenestrated drape

Element: VA-NSG L/T CL1 PREP-CHLORHEXIDINE

Text: Insertion site scrubbed with chlorhexidine

Element: VA-NSG L/T CL1 PREP-ANTIBICROBIAL

Text: Insertion site scrubbed with other antimicrobial:  
{FLD:TEXT (1-60 CHAR)}

Element: VA-NSG L/T CL1 PREP-LIDOCAINE

Text: Lidocaine 1% intradermal: Procedure total given (ml):  
{FLD: (1-10 CHAR)}

Element: VA-NSG L/T CL1 PREP-OTH PREP

Text: Other: {FLD:TEXT (1-60 CHAR)}

**BEFORE:**

Group: **VA-NSG SA L/T CENTRAL 2 PREP**

Text: Insertion preparation:  
[NO BOX, NO SUPPRESS, SHOW, NO SELECTION]

Element: VA-NSG L/T CL2 PREP-INSTRUCTIONS

Text: - Hand hygiene performed  
- Cap worn by inserter  
- Sterile glove worn by inserter  
- Sterile gown worn by inserter  
- Mask worn by all present  
- Draped patient in sterile fashion with large full body fenestrated drape

Element: VA-NSG L/T CL2 PREP-CHLORHEXIDINE

Text: Insertion site scrubbed with chlorhexidine

Element: VA-NSG L/T CL2 PREP-ANTIBICROBIAL

Text: Insertion site scrubbed with other antimicrobial:  
{FLD:TEXT (1-60 CHAR)}

Element: VA-NSG L/T CL2 PREP-LIDOCAINE

Text: Lidocaine 1% intradermal: Procedure total given (ml):  
{FLD: (1-10 CHAR)}

Element: VA-NSG L/T CL2 PREP-OTH PREP

Text: Other: {FLD:TEXT (1-60 CHAR)}

**BEFORE:**

Group: **VA-GP NSG SA L/T MIDLINE PREP**

Text: Insertion preparation:  
[NO BOX, NO SUPPRESS, SHOW, NO SELECTION]

Element: VA-NSG L/T MIDLINE PREP-INSTRUCTIONS

Text: - Hand hygiene performed  
- Cap worn by inserter  
- Sterile glove worn by inserter  
- Sterile gown worn by inserter  
- Mask worn by all present  
- Draped patient in sterile fashion with large full body fenestrated drape

Element: VA-NSG L/T MIDLINE PREP-CHLORHEXIDINE

Text: Insertion site scrubbed with chlorhexidine

Element: VA-NSG L/T MIDLINE PREP-ANTIBICROBIAL

Text: Insertion site scrubbed with other antimicrobial:  
{FLD:TEXT (1-60 CHAR)}

Element: VA-NSG L/T MIDLINE PREP-LIDOCAINE

Text: Lidocaine 1% intradermal: Procedure total given (ml):  
{FLD: (1-10 CHAR)}

Element: VA-NSG L/T MIDLINE PREP-OTH PREP

Text: Other: {FLD:TEXT (1-60 CHAR)}

- Patient identified and Time Out performed:
- Insertion preparation:
- Hand hygiene performed
  - Cap worn by inserter
  - Sterile glove worn by inserter
  - Sterile gown worn by inserter
  - Mask worn by all present
  - Draped patient in sterile fashion with large full body fenestrated drape
- Insertion site scrubbed with chlorhexidine
- Insertion site scrubbed with other antimicrobial: \_\_\_\_\_
- Lidocaine 1% intradermal: Procedure total given (ml): \_\_\_\_\_
- Other: \_\_\_\_\_

**AFTER:**

Group: **VA-NSG SA L/T CENTRAL 1 PREP**

Text: Insertion preparation:

Element: VA-NSG L/T CL1 PREP-HAND HYGIENE

Text: Hand hygiene performed

Finding: VA-VAAES CENTRAL LINE #1 INSERT PREP HAND HYGIENE (HEALTH FACTOR)

Element: VA-NSG L/T CL1 PREP-CAP WORN

Text: Cap worn by inserter

Finding: VA-VAAES CENTRAL LINE #1 INSERT PREP CAP (HEALTH FACTOR)

Element: VA-NSG L/T CL1 PREP-GLOVES

Text: Sterile gloves worn by inserter

Finding: VA-VAAES CENTRAL LINE #1 INSERT PREP STERILE GLOVES (HEALTH FACTOR)

Element: VA-NSG L/T CL1 PREP-STERILE GOWN

Text: Sterile gown worn by inserter

Finding: VA-VAAES CENTRAL LINE #1 INSERT PREP GOWN (HEALTH FACTOR)

Element: VA-NSG L/T CL1 PREP-MASK

Text: Mask worn by all present

Finding: VA-VAAES CENTRAL LINE #1 INSERT PREP MASK (HEALTH FACTOR)

Element: VA-NSG L/T CL1 PREP-DRAPE

Text: Patient draped in sterile fashion with large fenestrated drape

Finding: VA-VAAES CENTRAL LINE #1 INSERT PREP DRAPE (HEALTH FACTOR)

Element: VA-NSG L/T CL1 PREP-CHLORHEXIDINE

Text: Insertion site scrubbed with chlorhexidine

Finding: VA-VAAES CL#1 INSERTION PREP CHLOR (HEALTH FACTOR)

Element: VA-NSG L/T CL1 PREP-ANTIBICROBIAL

Text: Insertion site scrubbed with other antimicro (1-60 CHAR)}

Finding: VA-VAAES CL#1 INSERTION PREP ANTIMIC

Element: VA-NSG L/T CL1 PREP-LIDOCAINE  
Text: Lidocaine 1% intradermal: Procedure total g (1-10 CHAR)}  
Finding: \*NONE\*

Element: VA-NSG L/T CL1 PREP-OTH PREP  
Text: Other: {FLD:TEXT (1-60 CHAR)}  
Finding: VA-VAAES CL#1 INSERTION PREP OTHER (HEALTH FACTOR)

Reminder Dialog Template: VAAES Nsg IV Insertion and Maintenance

- Patient identified and Time Out performed:
- Insertion preparation:
  - Hand hygiene performed
  - Cap worn by inserter
  - Sterile gloves worn by inserter
  - Sterile gown worn by inserter
  - Mask worn by all present
  - Patient draped in sterile fashion with large full body fenestrated drape
  - Insertion site scrubbed with chlorhexidine
  - Insertion site scrubbed with other antimicrobial: \_\_\_\_\_
  - Lidocaine 1% intradermal: Procedure total given (ml): \_\_\_\_\_
  - Other: \_\_\_\_\_

**AFTER:**

Group: **VA-NSG SA L/T CENTRAL 2 PREP**

Text: Insertion preparation:

Element: VA-NSG L/T CL2 PREP-HAND HYGIENE  
Text: Hand hygiene performed  
Finding: VA-VAAES CENTRAL LINE #2 INSERT PREP HAND HYGIENE (HEALTH FACTOR)

Element: VA-NSG L/T CL2 PREP-CAP WORN  
Text: Cap worn by inserter  
Finding: VA-VAAES CENTRAL LINE #2 INSERT PREP CAP (HEALTH FACTOR)

Element: VA-NSG L/T CL2 PREP-GLOVES  
Text: Sterile gloves worn by inserter  
Finding: VA-VAAES CENTRAL LINE #2 INSERT PREP STERILE GLOVES (HEALTH FACTOR)

Element: VA-NSG L/T CL2 PREP-STERILE GOWN  
Text: Sterile gown worn by inserter  
Finding: VA-VAAES CENTRAL LINE #2 INSERT PREP GOWN (HEALTH FACTOR)

Element: VA-NSG L/T CL2 PREP-MASK  
Text: Mask worn by all present  
Finding: VA-VAAES CENTRAL LINE #2 INSERT PREP MASK (HEALTH FACTOR)

Element: VA-NSG L/T CL2 PREP-DRAPE  
Text: Patient draped in sterile fashion with large fenestrated drape  
Finding: VA-VAAES CENTRAL LINE #2 INSERT PREP DRAPE (HEALTH FACTOR)

Element: VA-NSG L/T CL2 PREP-CHLORHEXIDINE  
Text: Insertion site scrubbed with chlorhexidine  
Finding: VA-VAAES CL#2 INSERTION PREP CHLOR (HEALTH FACTOR)

Element: VA-NSG L/T CL2 PREP-ANTIBIOTIC



Text: Insertion site scrubbed with other antimicro (1-60 CHAR)}  
Finding: VA-VAAES CL#2 INSERTION PREP ANTIMIC

Element: VA-NSG L/T CL2 PREP-LIDOCAINE  
Text: Lidocaine 1% intradermal: Procedure total g (1-10 CHAR)}  
Finding: \*NONE\*

Element: VA-NSG L/T CL2 PREP-OTH PREP  
Text: Other: {FLD:TEXT (1-60 CHAR)}  
Finding: VA-VAAES CL#2 INSERTION PREP OTHER (HEALTH FACTOR)

Reminder Dialog Template: VAAES Nsg IV Insertion and Maintenance

- Patient identified and Time Out performed:
- Insertion preparation:
  - Hand hygiene performed
  - Cap worn by inserter
  - Sterile gloves worn by inserter
  - Sterile gown worn by inserter
  - Mask worn by all present
  - Patient draped in sterile fashion with large full body fenestrated drape
  - Insertion site scrubbed with chlorhexidine
  - Insertion site scrubbed with other antimicrobial: \_\_\_\_\_
  - Lidocaine 1% intradermal: Procedure total given (ml): \_\_\_\_\_
  - Other: \_\_\_\_\_

**AFTER:**

Group: **VA-GP NSG SA L/T MIDLINE PREP**

Text: Insertion preparation:

Element: VA-NSG L/T MIDLINE PREP-HAND HYGIENE  
Text: Hand hygiene performed  
Finding: VA-VAAES MIDLINE INSERT PREP HAND HYGIENE (HEALTH FACTOR)

Element: VA-NSG L/T MIDLINE PREP-CAP WORN  
Text: Cap worn by inserter  
Finding: VA-VAAES MIDLINE INSERT PREP CAP (HEALTH FACTOR)

Element: VA-NSG L/T MIDLINE PREP-GLOVES  
Text: Sterile gloves worn by inserter  
Finding: VA-VAAES MIDLINE INSERT PREP STERILE GLOVES (HEALTH FACTOR)

Element: VA-NSG L/T MIDLINE PREP-STERILE GOWN  
Text: Sterile gown worn by inserter  
Finding: VA-VAAES MIDLINE INSERT PREP GOWN (HEALTH FACTOR)

Element: VA-NSG L/T MIDLINE PREP-MASK  
Text: Mask worn by all present  
Finding: VA-VAAES MIDLINE INSERT PREP MASK (HEALTH FACTOR)

Element: VA-NSG L/T MIDLINE PREP-DRAPE  
Text: Patient draped in sterile fashion with large fenestrated drape  
Finding: VA-VAAES MIDLINE INSERT PREP DRAPE (HEALTH FACTOR)

Element: VA-NSG L/T MIDLINE PREP-CHLORHEXIDINE  
Text: Insertion site scrubbed with chlorhexidine  
Finding: VA-VAAES MIDLINE INSERTION PREP CHLOR (HEALTH FACTOR)

Element: VA-NSG L/T MIDLINE PREP-ANTIBICROBIAL  
Text: Insertion site scrubbed with other antimicro (1-60 CHAR)}  
Finding: VA-VAAES MIDLINE INSERTION PREP ANTIMIC

Element: VA-NSG L/T MIDLINE PREP-LIDOCAINE  
Text: Lidocaine 1% intradermal: Procedure total g (1-10 CHAR)}  
Finding: \*NONE\*

Element: VA-NSG L/T MIDLINE PREP-OTH PREP  
Text: Other: {FLD:TEXT (1-60 CHAR)}  
Finding: VA-VAAES MIDLINE INSERTION PREP OTHER (HEALTH FACTOR)

Reminder Dialog Template: VAAES Nsg IV Insertion and Maintenance

- Patient identified and Time Out performed:
- Insertion preparation:
  - Hand hygiene performed
  - Cap worn by inserter
  - Sterile gloves worn by inserter
  - Sterile gown worn by inserter
  - Mask worn by all present
  - Patient draped in sterile fashion with large full body fenestrated drape
  - Insertion site scrubbed with chlorhexidine
  - Insertion site scrubbed with other antimicrobial:
  - Lidocaine 1% intradermal: Procedure total given (ml):
  - Other:

## 5. Reminder Dialog ELEMENT: VA-TXT HCOE CBT RISK INFO MOTOR-EVIDENCE OF

This element resides in the VA-HEADACHE CENTER OF EXCELLENCE-CBT reminder dialog.

Change Made: In template field VA-HCOE CBT MOTOR, a misspelling was corrected; from “Psychmotor” to “Psychomotor”

**BEFORE:**

Name:	VA-HCOE CBT MOTOR		
Type:	Check Boxes	Field Len:	Text Len:
Default:			
Items:	Abnormal movements Psychomotor agitation Psychomotor retardation Ritualistic behaviors Tics Tremors Unable to observe		
Line: 2			
Col: 12			
LM Text:			

**AFTER:**

Name:	VA-HCOE CBT MOTOR		
Type:	Check Boxes	Field Len:	Text Len:
Default:			
Items:	Abnormal movements Psychomotor agitation Psychomotor retardation Ritualistic behaviors Tics Tremors Unable to observe		
Line: 5			
Col: 5			
LM Text:			

## 6. Reminder Dialog ELEMENT: VA-TXT HCOE-HEADACHE #1

This element resides in the VA-HEADACHE CENTER OF EXCELLENCE-CBT reminder dialog.

Change Made: In template field VA-HCOE HA CAUSE, a misspelling was corrected; from “Menstration” to “Menstruation”

**BEFORE:**

Name: VA-HCOE HA CAUSE  
Type: Check Boxes Field Len: Text Len:  
Default:  
Items: Nothing  
Exposure to Open Burn Pits  
Head Injury  
Menstration  
Neck Injury  
Pregnancy  
Whiplash  
Other:  
Line: 5  
Col: 13  
LM Text:  
Miscellaneous Indent

**AFTER:**

Name: VA-HCOE HA CAUSE  
Type: Check Boxes Field Len: Text Len:  
Default:  
Items: Nothing  
Exposure to Open Burn Pits  
Head Injury  
Menstruation  
Neck Injury  
Pregnancy  
Whiplash  
Other:  
Line: 9  
Col: 1  
LM Text:

## 7. Reminder Dialog ELEMENT: VA-HF HCOE CBT DEPRESSION RESULTS-MOD/SEVERE

This element resides in the VA-HEADACHE CENTER OF EXCELLENCE-CBT reminder dialog.

Change Made: A misspelling was corrected in the text; from “leve” to “level”

### **BEFORE:**

Element: VA-HF HCOE CBT DEPRESSION RESULTS-MOD/SEVERE  
Text: Moderately-severe **leve** of depressive symptoms (15-19)

### **AFTER:**

Element: VA-HF HCOE CBT DEPRESSION RESULTS-MOD/SEVERE  
Text: Moderately-severe **level** of depressive symptoms (15-19)

## 8. Reminder TAXONOMY: VA-WH PAP SMEAR SCREEN CODES

Change Made: The Taxonomy was updated to match performance measurement requirements.

### **BEFORE:**

Reminder Taxonomy: VA-WH PAP SMEAR SCREEN CODES

This taxonomy includes the following numbers of codes:

ICD-10-CM: 3

HCPCS: 2

CPT-4: 17

ICD-9-CM: 1

ICD-9 Proc: 1

**Total number of codes: 24**

### **AFTER:**

Reminder Taxonomy: VA-WH PAP SMEAR SCREEN CODES

This taxonomy includes the following numbers of codes:

ICD-10-CM: 3

HCPCS: 11

CPT-4: 18

ICD-9-CM: 1

ICD-9 Proc: 1

SNOMED CT: 42

**Total number of codes: 76**

## 9. Reminder TAXONOMY: VA-WH HYSTERECTOMY W/CERVIX REMOVED

Change Made: The Taxonomy was updated to match performance measurement requirements.

### **BEFORE:**

Reminder Taxonomy: VA-WH HYSTERECTOMY W/CERVIX REMOVED

This taxonomy includes the following numbers of codes:

ICD-10-CM: 2

ICD-10-PCS: 4

CPT-4: 23

ICD-9-CM: 1

ICD-9 Proc: 10

SNOMED CT: 39

**Total number of codes: 79**

### **AFTER:**

Reminder Taxonomy: VA-WH HYSTERECTOMY W/CERVIX REMOVED

This taxonomy includes the following numbers of codes:

ICD-10-CM: 3; 3 are unique.

ICD-10-PCS: 4; 4 are unique.

CPT-4: 42; 42 are unique.

ICD-9-CM: 5; 4 are unique.

ICD-9 Proc: 10; 10 are unique.

SNOMED CT: 64; 64 are unique.

**Total number of codes: 128; 127 are unique.**

## 10. Reminder GROUPS: VA-GP SCI/D BLADDER MGMT STATUS MASTER and VA-GP SCI/D BLADDER MGMT-REVIEW/VERIFY (BL)

These groups reside in the VA-SPINAL CORD INJURIES AND DISORDERS reminder dialog.

Change Made: An optional checkbox has been added under the Primary Care Management section to provide definitions to users and additional options have been added under the Primary Collection Device / Yes section.

### **BEFORE:**

Group: VA-GP SCI/D BLADDER MGMT STATUS MASTER

Text: PRIMARY BLADDER MANAGEMENT

Group: VA-GP SCI/D BLADDER MGMT EMPTYING METHOD  
Text: A. Primary Bladder Emptying Method

Group: VA-GP SCI/D BLADDER MGMT COLLECTION DEVICE YES  
Text: Yes

Element: VA-SCI/D BLADDER MANAGEMENT COLLECTION DEVICE CONDOM CATHETER  
Text: Condom Catheter/Sheath

Element: VA-SCI/D BLADDER MANAGEMENT COLLECTION DEVICE DIAPER  
Text: Diaper-Pad

Element: VA-SCI/D BLADDER MANAGEMENT COLLECTION DEVICE OSTOMY BAG  
Text: Ostomy bag

PRIMARY BLADDER MANAGEMENT

A. Primary Bladder Emptying Method

- Normal voiding
- Bladder reflex triggering or bladder expression
- Intermittent catheterization
- Indwelling catheter
- Dialysis
- Sacral anterior root stimulation
- Non-continent urinary diversion/ostomy
- Other method
- Unknown

B. Primary Collection Device

- None
- Yes
  - Condom Catheter/Sheath
  - Diaper-Pad
  - Ostomy bag

C. Surgical Procedures

- None
- Yes

**AFTER:**

Group: VA-GP SCI/D BLADDER MGMT STATUS MASTER  
Text: PRIMARY BLADDER MANAGEMENT

Group: VA-SCI/D BLADDER MGMT STATUS INSTRUCTIONS CB  
Text: [Click here for definitions](#)

Group: VA-GP SCI/D BLADDER MGMT EMPTYING METHOD  
Text: A. Primary Bladder Emptying Method

Group: VA-GP SCI/D BLADDER MGMT COLLECTION DEVICE YES  
Text: Yes

Element: VA-SCI/D BLADDER MANAGEMENT COLLECTION DEVICE CONDOM CATHETER  
Text: Condom Catheter/Sheath

Element: VA-SCI/D BLADDER MANAGEMENT COLLECTION DEVICE DIAPER  
Text: Diaper-Pad

Element: VA-SCI/D BLADDER MANAGEMENT COLLECTION DEVICE URINAL  
Text: Urinal

Element: VA-SCI/D BLADDER MANAGEMENT COLLECTION DEVICE FOLEY/LEG BAG  
Text: Foley bag or Leg bag

Element: VA-SCI/D BLADDER MANAGEMENT COLLECTION DEVICE OSTOMY BAG  
Text: Ostomy bag

PRIMARY BLADDER MANAGEMENT

[Click here for definitions](#)

Emptying Method: Enter the most common method for the Veteran to empty urine from the bladder.


- Normal Voiding
- Voids without assistive device or technique
- May include occasional incontinence
- May void to toilet, urinal, diaper, etc.
- Bladder Reflex Triggering or Bladder Expression
- Voluntary - tapping, scratching, anal stretch, etc.
- Involuntary - allows the urine to pass by itself when the reflex detrusor contraction occurs
- Straining - abdominal straining, Valsalva's maneuver
- External Compression to bladder - Credé maneuver
- Intermittent Catheterization
- Self-catheterization
- Catheterization by attendant, spouse, partner
- Indwelling Catheter
- Transurethral - regardless of collection device
- Suprapubic - regardless of collection device
- Dialysis
- Sacral Anterior Root Stimulation - a subcutaneous device controlled by an external remote
- Non-Continent Urinary Diversion/Ostomy - surgical diversion of ureter(s) through a stoma
- Other Method
  - Details: (Free text allowed)
- Unknown

Primary Collection Device: Enter the primary urine collection or external device used, if applicable.

- None
- Yes
  - Condom Catheter/Sheath
  - Diaper-Pad
  - Urinal
  - Foley bag or Leg bag
  - Ostomy Bag

Surgical Procedure: If there has been a surgical procedure that currently determines bladder management.

- None
- Yes
  - Artificial Sphincter
  - Bladder Augmentation
  - Continent Catheterizable Channel
  - Ileoureterostomy (ileal conduit)
  - Ileovesicostomy
  - Sacral anterior root stimulator
  - Sphincterotomy/urethral stent
  - Supra-pubic catheter insertion
  - Other
    - Details: (Free text allowed)





Reminder Dialog Template: Va-Spinal Cord Injuries And Disorders

PRIMARY BLADDER MANAGEMENT

Click here for definitions

A. Primary Bladder Emptying Method

- Normal voiding
- Bladder reflex triggering or bladder expression
- Intermittent catheterization
- Indwelling catheter
- Dialysis
- Sacral anterior root stimulation
- Non-continent urinary diversion/ostomy
- Other method
- Unknown

B. Primary Collection Device

- None
- Yes
  - Condom Catheter/Sheath
  - Diaper-Pad
  - Urinal
  - Foley bag or Leg bag
  - Ostomy bag

C. Surgical Procedures

[Visit Info](#)

