



Update _2_0_143

Clinical Reminders

**VA-MOVE PROGRAM TEMPLATE
Install Guide**

March 2021

Product Development
Office of Information Technology
Department of Veterans Affairs

Table of Contents

INTRODUCTION	1
INSTALL DETAILS	5
INSTALL EXAMPLE	5
POST INSTALLATION	9

Introduction

The MOVE! Weight Management Program note template is to be used by local facility clinicians delivering the 16-session MOVE! workbook curriculum to document veteran participation in the MOVE! Program.

The template is sponsored by the National Center for Health Promotion and Disease Prevention (NCP). For questions, contact [Redacted](#).

UPDATE_2_0_143 contains 1 Reminder Exchange entry:

UPDATE_2_0_143 VA-MOVE PROGRAM TEMPLATE

The exchange file contains the following components:

GMRV VITAL TYPE

WEIGHT

TIU TEMPLATE FIELD

IC/BLANK LINE 74 CHARACTERS T DIALOG USE

VA-MOVE GOAL STATUS

WP 1 LINE

TIME SPENT 15-90

TEXT (1-50 CHAR)

NUMBER 1-50

HEALTH FACTORS

VA-REMINDER UPDATES

VA-UPDATE_2_0_143

VA-MOVE WEIGHT MANAGEMENT

VA-MOVE SESSION MAINTAIN-GOAL SETTING

VA-MOVE SESSION MAINTAIN-TOOLKIT

VA-MOVE SESSION MAINTAIN-OTHER

VA-MOVE SESSION MAINTAIN-MOTIVATED

VA-MOVE SESSION MAINTAIN-BODY IMAGE

VA-MOVE SESSION MAINTAIN-WEIGHT

VA-MOVE SESSION-MAINTAIN PROGRESS

VA-MOVE SESSION FINE TUNE-MEDS

VA-MOVE SESSION FINE TUNE-MOTIVATION

VA-MOVE SESSION FINE TUNE-OTHER

VA-MOVE SESSION FINE TUNE-CHR COND

VA-MOVE SESSION FINE TUNE-FINE TUNE

VA-MOVE SESSION FINE TUNE-HOW ACTIVE

VA-MOVE SESSION-FINE TUNE ACTIVITY

VA-MOVE SESSION STRESS-SUPPORT

VA-MOVE SESSION STRESS-TECHNIQUES

VA-MOVE SESSION STRESS-OTHER

VA-MOVE SESSION STRESS-MINDFULNESS

VA-MOVE SESSION STRESS-TRACKING

VA-MOVE SESSION STRESS-MANAGE

VA-MOVE SESSION-STRESS
VA-MOVE SESSION DINING OUT-SOCIAL EATING
VA-MOVE SESSION DINING OUT-TAKEOUT
VA-MOVE SESSION DINING OUT-OTHER
VA-MOVE SESSION DINING OUT-FAST FOOD
VA-MOVE SESSION DINING OUT-RESTAURANT
VA-MOVE SESSION DINING OUT-PLAN
VA-MOVE SESSION-DINING OUT
VA-MOVE SESSION SLIPS-OTHER
VA-MOVE SESSION SLIPS-RELAPSE
VA-MOVE SESSION SLIPS-PLAN
VA-MOVE SESSION SLIPS-HANDLE SLIPS
VA-MOVE SESSION SLIPS-RECOGNIZE
VA-MOVE SESSION-SLIPS
VA-MOVE SESSION FOOD-FAD DIETS
VA-MOVE SESSION FOOD-SUBSTITUTIONS
VA-MOVE SESSION FOOD-OTHER
VA-MOVE SESSION FOOD-FAT
VA-MOVE SESSION FOOD-PROTEIN
VA-MOVE SESSION FOOD-CARBS
VA-MOVE SESSION-FOOD FINESSE
VA-MOVE SESSION TRIGGERS-BUST TRIGGERS
VA-MOVE SESSION TRIGGERS-ENVIRONMENT
VA-MOVE SESSION TRIGGERS-OTHER
VA-MOVE SESSION TRIGGERS-CRAVINGS
VA-MOVE SESSION TRIGGERS-RESPONDING
VA-MOVE SESSION TRIGGERS-CUES
VA-MOVE SESSION-TRIGGERS/CUES
VA-MOVE SESSION INC ACTIV-ALL TOGETHER
VA-MOVE SESSION INC ACTIV-FLEXIBILITY
VA-MOVE SESSION INC ACTIV-OTHER
VA-MOVE SESSION INC ACTIV-STRENGTH
VA-MOVE SESSION INC ACTIV-CARDIO
VA-MOVE SESSION INC ACTIV-CHECK IN
VA-MOVE SESSION-PUMP UP ACTIVITY
VA-MOVE SESSION CHALLENGES-OTHER
VA-MOVE SESSION CHALLENGES-PLATEAUS
VA-MOVE SESSION CHALLENGES-PROB SOLVING
VA-MOVE SESSION CHALLENGES-COMMON
VA-MOVE SESSION-CHALLENGES
VA-MOVE SESSION PLAN-BARRIERS
VA-MOVE SESSION PLAN-COOKING HLTHY
VA-MOVE SESSION PLAN-OTHER
VA-MOVE SESSION PLAN-FOOD LABELS
VA-MOVE SESSION PLAN-SHOPPING
VA-MOVE SESSION PLAN-MEALS
VA-MOVE SESSION-PLAN/SHOP/COOK
VA-MOVE SESSION TAKE CHARGE-TRIGGERS
VA-MOVE SESSION TAKE CHARGE-OTHER
VA-MOVE SESSION TAKE CHARGE-RETHINKING
VA-MOVE SESSION TAKE CHARGE-THOUGHTS

VA-MOVE SESSION TAKE CHARGE-AWARENESS
VA-MOVE SESSION-TAKE CHARGE
VA-MOVE SESSION FITNESS-BARRIERS
VA-MOVE SESSION FITNESS-CURRENT ACTIVITY
VA-MOVE SESSION FITNESS-OTHER
VA-MOVE SESSION FITNESS-INTENSITY
VA-MOVE SESSION FITNESS-HOW ACTIVE
VA-MOVE SESSION FITNESS-PHY ACTIVITY
VA-MOVE SESSION-FIT FOR LIFE
VA-MOVE SESSION EAT WISELY-BARRIERS
VA-MOVE SESSION EAT WISELY-SIZE IT UP
VA-MOVE SESSION EAT WISELY-OTHER
VA-MOVE SESSION EAT WISELY-LIQ CALORIES
VA-MOVE SESSION EAT WISELY-FOOD GRPS
VA-MOVE SESSION EAT WISELY-HLTHY PLATE
VA-MOVE SESSION-EAT WISELY
VA-MOVE SESSION BALANCE-BURNING CALORIES
VA-MOVE SESSION BALANCE-FEWER CALORIES
VA-MOVE SESSION BALANCE-OTHER
VA-MOVE SESSION BALANCE-TARIK STORY
VA-MOVE SESSION BALANCE-CALORIE GOAL
VA-MOVE SESSION BALANCE-ENERGY
VA-MOVE SESSION-TIP THE BALANCE
VA-MOVE SESSION TRACKING-REWARDS
VA-MOVE SESSION TRACKING-BARRIERS
VA-MOVE SESSION TRACKING-OTHER
VA-MOVE SESSION TRACKING-FOOD/ACTIVITY
VA-MOVE SESSION TRACKING-SARAH STORY
VA-MOVE SESSION TRACKING-WHAT YOU DO
VA-MOVE SESSION-TRACKING
VA-MOVE SESSION WELCOME-CONFIDENCE
VA-MOVE SESSION WELCOME-GOAL SETTING
VA-MOVE SESSION WELCOME-OTHER
VA-MOVE SESSION WELCOME-BALANCE
VA-MOVE SESSION WELCOME-REASONS
VA-MOVE SESSION WELCOME-MOVE
VA-MOVE SESSION-WELCOME
VA-MOVE SESSION GOAL 2
VA-MOVE SESSION GOAL 1
VA-MOVE SMART GOAL REVIEW
VA-MOVE SESSION-MOVEMENT ACTIVITY
VA-MOVE FOOD/ACTIVITY LOG REVIEWED
VA-MOVE EDUCATION-OTHER
VA-MOVE EDUCATION-WORKBOOK
VA-MOVE DELIVERY METHOD-VIDEO
VA-MOVE DELIVERY METHOD-PHONE
VA-MOVE DELIVERY METHOD-IN PERSON
VA-MOVE STARTING WEIGHT (lbs)
VA-MOVE STARTING DATE
VA-MOVE PARTICIPATION-OTHER
VA-MOVE PARTICIPATION-PASSIVE

VA-MOVE PARTICIPATION-ACTIVE
VA-MOVE ASSESSMENT-IND
VA-MOVE ASSESSMENT-GRP

REMINDER SPONSOR

NATIONAL CENTER FOR HEALTH PROMOTION AND DISEASE PREVENTION (NCP)
OFFICE OF TELEHEALTH SERVICES STORE AND FORWARD TELEHEALTH

REMINDER TERM

VA-REMINDER UPDATE_2_0_143
VA-BL MOVE! SMART GOAL 2
VA-BL MOVE! SMART GOAL 1
VA-BL MOVE! STARTING WEIGHT
VA-BL MOVE! STARTING DATE

HEALTH SUMMARY COMPONENT

PCE HEALTH FACTORS SELECTED
VITAL SIGNS SELECTED

HEALTH SUMMARY TYPE

VA- MOVE! SMART GOAL 2
VA- MOVE! SMART GOAL 1
VA- MOVE! STARTING WEIGHT
VA- MOVE! STARTING DATE
WEIGHT-LAST 3

HEALTH SUMMARY OBJECTS

VA- MOVE! SMART GOAL 2 (TIU)
VA- MOVE! SMART GOAL 1 (TIU)
VA- MOVE! STARTING WEIGHT (TIU)
VA- MOVE! STARTING DATE (TIU)
WEIGHT-LAST 3 (TIU)

TIU DOCUMENT DEFINITION

VA- MOVE! SMART GOAL 2
VA- MOVE! SMART GOAL 1
VA- MOVE! STARTING WEIGHT
VA- MOVE! STARTING DATE
WEIGHT-LAST 3
PATIENT HEIGHT

REMINDER DIALOG

VA-MOVE! WEIGHT MANAGEMENT PROGRAM

Install Details

This update is being distributed as a web host file. The address for the host file is:

https://REDACTED/UPDATE_2_0_143.PRD

The file will be installed using Reminder Exchange, programmer access is not required.

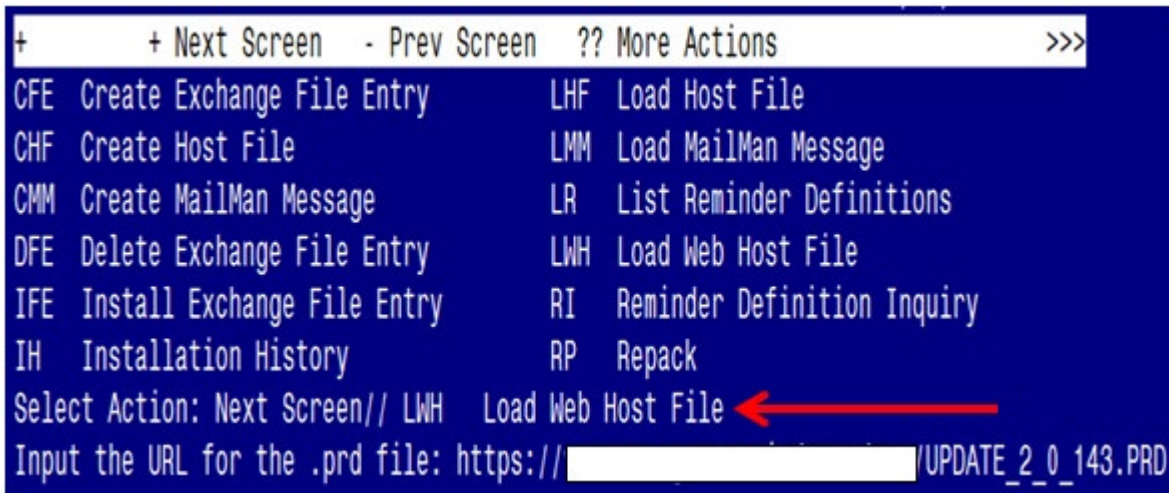
Installation:

=====

This update can be loaded with users on the system. Installation will take less than 15 minutes.

Install Example

To Load the Web Host File. Navigate to Reminder exchange in Vista



```
+      + Next Screen  - Prev Screen  ?? More Actions      >>>
CFE  Create Exchange File Entry      LHF  Load Host File
CHF  Create Host File                 LMM  Load MailMan Message
CMM  Create MailMan Message           LR   List Reminder Definitions
DFE  Delete Exchange File Entry       LWH  Load Web Host File
IFE  Install Exchange File Entry      RI   Reminder Definition Inquiry
IH   Installation History              RP   Repack
Select Action: Next Screen// LWH  Load Web Host File ←
Input the URL for the .prd file: https://[REDACTED]/UPDATE_2_0_143.PRD
```

At the **Select Action:** prompt, enter **LWH** for Load Web Host File

At the **Input the url for the .prd file:** prompt, type the following web address:

https:// REDACTED /UPDATE 2 0 143.PRD

You should see a message at the top of your screen that the file successfully loaded.

https:// [REDACTED] /UPDATE_2_0_143.PRD successfully loaded.

Search and locate an entry titled **UPDATE_2_0_143 VA-MOVE PROGRAM TEMPLATE** in reminder exchange.

```

https://... UPDATE_2_0_143_4.PRD successfully loaded.
+Item  Entry                               Source                               Date Packed
195    UPDATE_2_0_143 VA-MOVE                 [REDACTED]                          03/10/2021@12:50
      PROGRAM TEMPLATES
196    UPDATE_2_0_144 VA-TECS                 [REDACTED]                          05/15/2020@10:01
      PROGRAM TEMPLATES
197    UPDATE_2_0_144 VA-TECS                 [REDACTED]                          06/15/2020@11:59
      PROGRAM TEMPLATES
198    UPDATE_2_0_144 VA-TECS                 [REDACTED]                          06/24/2020@09:43
      PROGRAM TEMPLATES
199    UPDATE_2_0_144 VA-TECS                 [REDACTED]                          08/04/2020@07:49
      PROGRAM TEMPLATES
+      + Next Screen  - Prev Screen  ?? More Actions  >>>
CFE    Create Exchange File Entry           LHF  Load Host File
CHF    Create Host File                     LMM  Load MailMan Message
CMM    Create MailMan Message               LR   List Reminder Definitions
DFE    Delete Exchange File Entry           LWH  Load Web Host File
IFE    Install Exchange File Entry         RI   Reminder Definition Inquiry
IH     Installation History                 RP   Repack
Select Action: Next Screen// IFE  Install Exchange File Entry
Enter a list or range of numbers (1-502): 195

```

At the **Select Action** prompt, enter **IFE** for Install Exchange File Entry
 Enter the number that corresponds with your entry UPDATE_2_0_143 VA-MOVE PROGRAM TEMPLATE (in this example it is entry 195. It will vary by site). The date of the exchange file should be 03/10/2021@12:50.

```

Component                               Category  Exists
Source: [REDACTED]
Date Packed: 03/10/2021@12:50:17
Package Version: 2.0P46

Description:
The following Clinical Reminder items were selected for packing:
REMINDER DIALOG
  VA-MOVE! WEIGHT MANAGMENT PROGRAM

REMINDER TERM
  VA-REMINDER UPDATE_2_0_143
Non-exchangeable TIU object(s):
-----
TIU Object: PATIENT HEIGHT
Object Method: S X=$$HEIGHT^TIULO(+$$G(DFN))

+      Enter ?? for more actions  >>>
IA    Install all Components         IS    Install Selected Component
Select Action: Next Screen// IA

```

At the **Select Action** prompt, type **IA** for Install all Components and hit enter.
 Select Action: Next Screen// **IA Install all Components**

You will see several prompts, for all new entries you will choose **I to Install**. For components that already exist but the packed component is different, choose **S to Skip**. **You will be prompted to install the reminder dialog component (VA-MOVE! WEIGHT MANAGEMENT PROGRAM)**

- You will choose to install all even though some components may have an X to indicate that they exist.

```
Packed reminder dialog: VA-MOVE! WEIGHT MANAGEMENT PROGRAM [NATIONAL DIALOG]
```

Item	Seq.	Dialog Findings	Type	Exists
1		VA-MOVE! WEIGHT MANAGEMENT PROGRAM	dialog	X
2	5	VA-MOVE! WEIGHT MANAGEMENT VERSION Finding: *NONE*	element	X
3	10	VA-GP MOVE! WEIGHT MANAGEMENT PROGRAM Finding: *NONE*	group	X
4	10.5	VA-GP MOVE! WEIGHT MGMT-ASSESSMENT Finding: *NONE*	group	X
5	10.5.5	VAL-GP MOVE! WT MGMT ASSESSMENT-GRP/IND Finding: *NONE*	group	X
6	10.5.5.5	VA-HF MOVE! ASSESSMENT-START DATE* Finding: VA-MOVE STARTING DATE (TIU DOCUMENT DEFINITION)	element	X
7		PXRM COMMENT	prompt	X
8	10.5.5.10	VA-HF MOVE! ASSESSMENT-STARTING WEIGHT*	element	

```
+ + Next Screen - Prev Screen ?? More Actions
DD Dialog Details DT Dialog Text IS Install Selected
DF Dialog Findings DU Dialog Usage QU Quit
DS Dialog Summary IA Install All
Select Action: Next Screen// IA
```

At the **Select Action** prompt, type **IA** to install the dialog – **VA-MOVE! WEIGHT MANAGEMENT PROGRAM**

Select Action: Next Screen// **IA Install All**

Install reminder dialog and all components with no further changes: Y// **Yes**

```

Packed reminder dialog: VA-MOVE! WEIGHT MANAGMENT PROGRAM [NATIONAL DIALOG]
VA-MOVE! WEIGHT MANAGMENT PROGRAM (reminder dialog) installed from exchange file
Item  Seq. Dialog Findings                               Type  Exists
-----
1      VA-MOVE! WEIGHT MANAGMENT PROGRAM                 dialog  X
2      5 VA-MOVE! WEIGHT MANAGEMENT VERSION                 element  X
      Finding: *NONE*
3      10 VA-GP MOVE! WEIGHT MANAGEMENT PROGRAM             group   X
      Finding: *NONE*
4      10.5 VA-GP MOVE! WEIGHT MGMT-ASSESSMENT              group   X
      Finding: *NONE*
5      10.5.5 VAL-GP MOVE! WT MGMT ASSESSMENT-GRP/IND      group   X
      Finding: *NONE*
6      10.5.5.5 VA-GP MOVE! WT MGMT ASSESSMENT-PROGRAM    group   X
      DELIVERY
      Finding: *NONE*
7      10.5.5.5.5 VA-GP MOVE! WT MGMT ASSESSMENT          group   X
+      + Next Screen  - Prev Screen  ?? More Actions
DD  Dialog Details      DT  Dialog Text      IS  Install Selected
DF  Dialog Findings    DU  Dialog Usage     QU  Quit
DS  Dialog Summary     IA  Install All
Select Action: Next Screen// Q

```

After completing this dialog install, you will type **Q**.

```

Component                                     Category  Exists
-----
Source:
Date Packed: 03/10/2021@12:50:17
Package Version: 2.0P46

Description:
The following Clinical Reminder items were selected for packing:
REMINDER DIALOG
  VA-MOVE! WEIGHT MANAGMENT PROGRAM

REMINDER TERM
  VA-REMINDER UPDATE_2_0_143
Non-exchangeable TIU object(s):
-----
TIU Object: PATIENT HEIGHT
Object Method: S X=$$HEIGHT^TIULO(+$G(DFN))
+      + Next Screen  - Prev Screen  ?? More Actions  >>>
IA  Install all Components      IS  Install Selected Component
Select Action: Next Screen// Q

```

You will then be returned to this screen. At the **Select Action** prompt, type **Q**.

Install complete.

Post Installation

1. Make the Dialogs able to be attached to a Personal/Shared template or to a progress note title.

From the Reminders Manager Menu:

Select Reminder Managers Menu Option: **CP CPRS Reminder Configuration**

- CA Add/Edit Reminder Categories
- CL CPRS Lookup Categories
- CS CPRS Cover Sheet Reminder List
- MH Mental Health Dialogs Active
- PN Progress Note Headers
- RA Reminder GUI Resolution Active
- TIU TIU Template Reminder Dialog Parameter**
- DL Default Outside Location
- PT Position Reminder Text at Cursor

Select CPRS Reminder Configuration Option: **TIU TIU Template Reminder Dialog Parameter**

Reminder Dialogs allowed as Templates may be set for the following:

- 1 User USR [choose from NEW PERSON]
- 3 Service SRV [choose from SERVICE/SECTION]
- 4 Division DIV [choose from INSTITUTION]
- 5 System SYS [NATREM.FO-SLC.MED.VA.GOV]

Enter selection: **5** *Choose the appropriate number for your site. Your site may do this by System or other levels. The example below uses SYSTEM level*

Setting Reminder Dialogs allowed as Templates for System:

Select Display Sequence: **?**

148 VA-VETERANS CHOICE NOTE

149 VA-TBI SCREENING

*When you type a question mark above, you will see the list of #'s (with dialogs) that are already taken. Choose a number **NOT** on this list. For this example, looking above I see the number 150 is not present, so I will use 150.*

Select Display Sequence: **150**

Are you adding 150 as a new Display Sequence? Yes// **Y YES**

Display Sequence: 150// **<Enter>** 150

Clinical Reminder Dialog: **VA-MOVE! WEIGHT MANAGEMENT PROGRAM**

then **<enter>** reminder dialog NATIONAL

OK? Yes// **<Enter>** (Yes)

2. Associate the new reminder dialogs with a shared template in CPRS

To do this, go to Template Editor, then Shared Templates, select the appropriate folder (if applicable), and choose **New Template** (top right-hand corner).

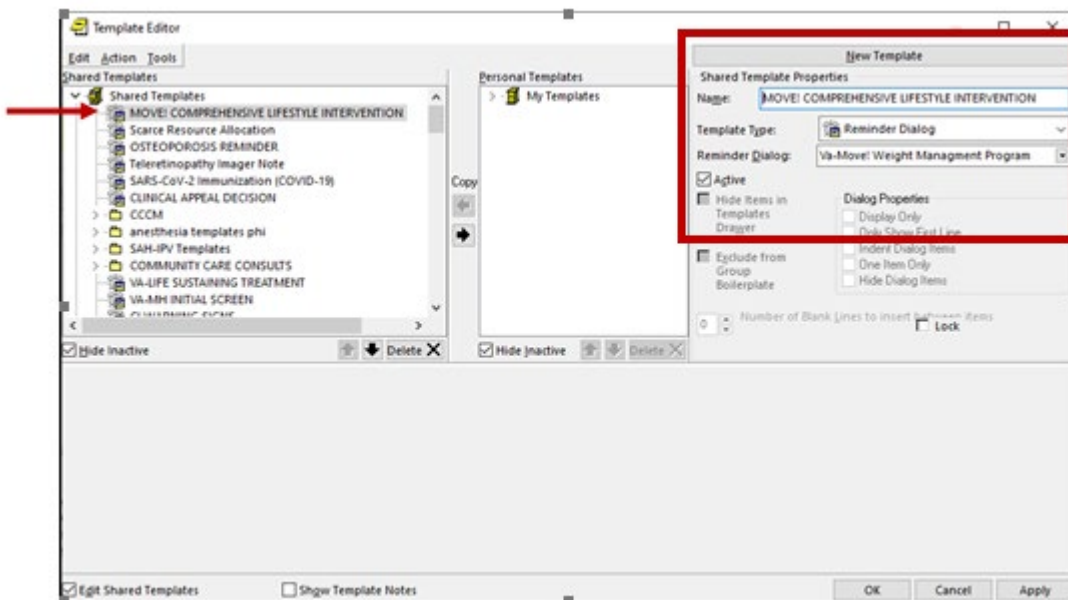
Type in the following information:

Name: **MOVE! COMPREHENSIVE LIFESTYLE INTERVENTION**

Template Type: Reminder Dialog

Reminder Dialog: **VA-MOVE! WEIGHT MANAGEMENT PROGRAM**

Next, select Apply.



3. Setup of specific Note title

The new note title that need to be created is:

MOVE! COMPREHENSIVE LIFESTYLE INTERVENTION

VHA Enterprise Standard Title: MOVE NOTE

Note: Comprehensive information on Creating Document Definitions can be found beginning on page 47 of the [TIU/ASU Implementation Guide](#)

4. Associate the reminder dialog with the note title in CPRS

To do this, go to Template Editor, then Document Titles, select the appropriate folder (if applicable), and choose New Template (top right-hand corner).

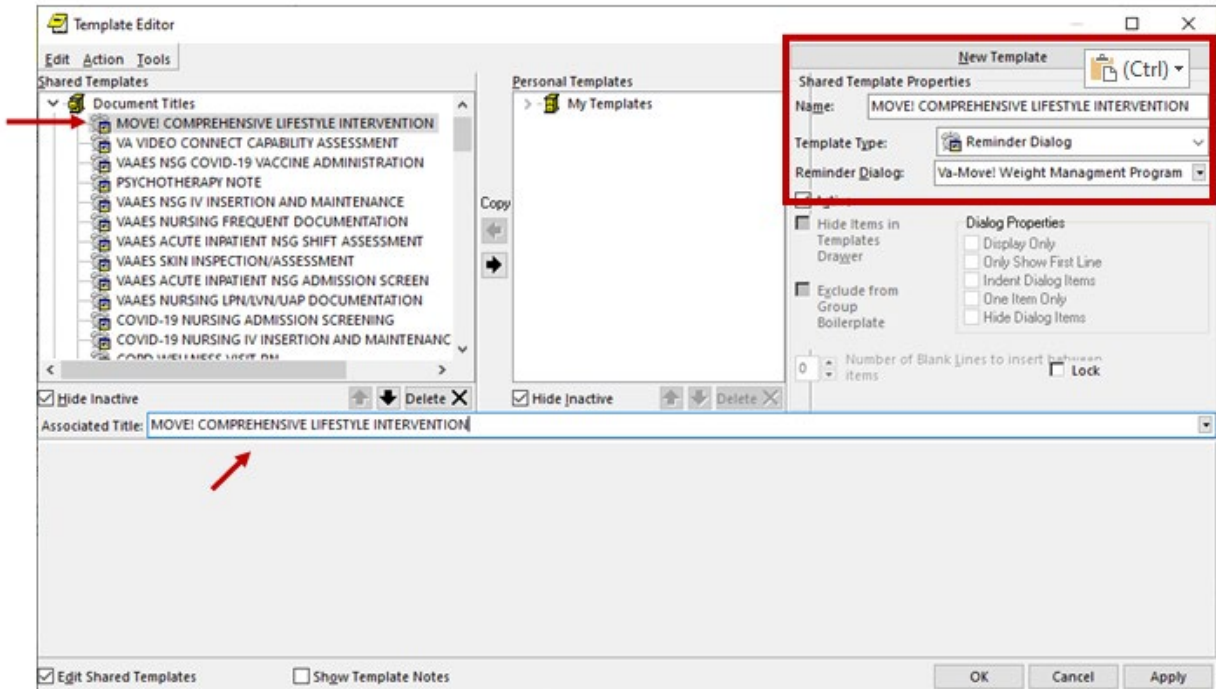
A. Type in the following information:

Name: **MOVE! COMPREHENSIVE LIFESTYLE INTERVENTION**

Template Type: Reminder Dialog

Reminder Dialog: **VA-MOVE! WEIGHT MANAGEMENT PROGRAM**

Next, type in the Associated Title, which in this case is **MOVE! COMPREHENSIVE LIFESTYLE INTERVENTION** and click APPLY.



5. Confirm the PATIENT HEIGHT and WEIGHT-LAST 3 objects are embedded in GROUP: **VAL-GP MOVE! WT MGMT ASSESSMENT – GRP/IND.**

NAME: VAL-GP MOVE! WT MGMT ASSESSMENT-GRP/IND Replace
 DISABLE:
 CLASS: LOCAL//

GROUP HEADER DIALOG TEXT:
BMI ASSESSMENT: \\
HEIGHT: |PATIENT HEIGHT|
 \\|WEIGHT-LAST 3|
 \\
 Edit? NO//

6. Add local dialog groups and elements, if needed – OPTIONAL

If your MOVE staff would like to insert local groups and elements from other dialogs into this template, you add them to the local reminder dialog group **VAL-GP MOVE! WEIGHT PLACEHOLDER**. Adding to this dialog group will place the local content at the end of the dialog template.