



Update _2_0_20

Reminder Dialogs

Breast Cancer:

VA-Oncology Breast
VA-Oncology Breast MDC
VA-Oncology Breast Treatment Plan
VA-Oncology Treatment Summary

Colorectal Cancer:

VA-Oncology Colorectal
VA-Oncology Colorectal MDC
VA-Oncology Colorectal Treatment Plan
VA-Oncology Colorectal Treatment Summary

Lung Cancer:

VA-Oncology Lung
VA-Oncology Thoracic MDC
VA-Oncology Lung Treatment Plan
VA-Oncology Lung Treatment Summary

Prostate Cancer:

VA-Oncology Prostate
VA-Oncology Prostate MDC
VA-Oncology Prostate Treatment Plan
VA-Oncology Prostate Treatment Summary

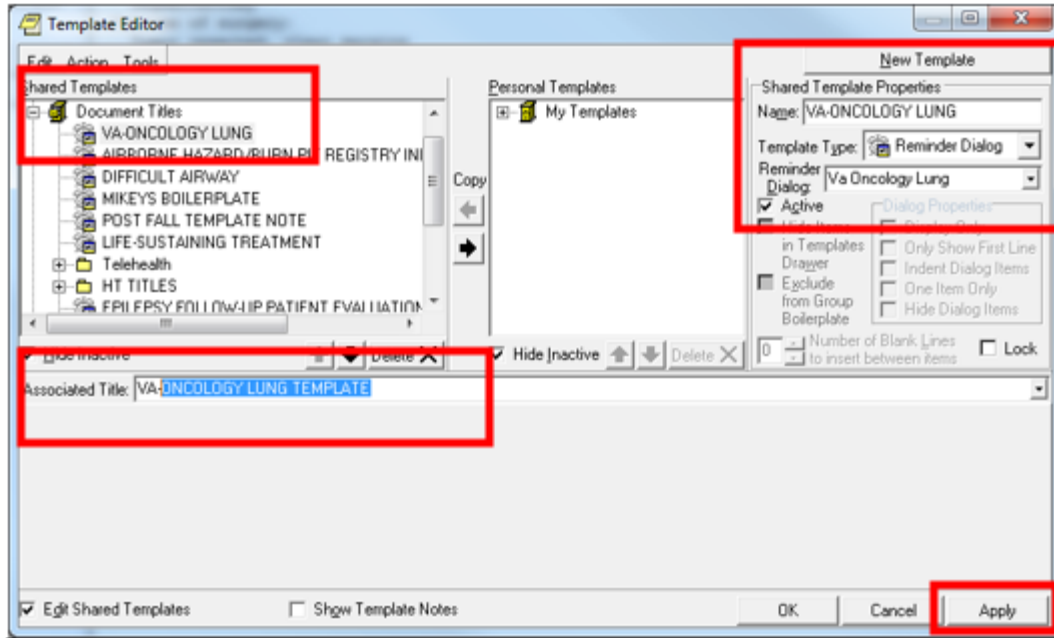
Install Guide

October 2016

Product Development
Office of Information Technology
Department of Veterans Affairs

Table of Contents

INTRODUCTION	1
BREAST CANCER.....	1
VA-Oncology Breast Components.....	1
VA-Oncology Breast MDC.....	9
VA-Oncology Breast Treatment Plan	13
VA-Oncology Breast Treatment Summary	17
COLORECTAL CANCER:	24
VA-Oncology Colorectal Components	24
VA-Oncology Colorectal MDC	30
VA-Oncology Colorectal Treatment Plan	33
VA-Oncology Colorectal Treatment Summary.....	36
LUNG CANCER:.....	41
VA-Oncology Lung (update)	41
VA-Oncology Thoracic MDC.....	48
VA-Oncology Lung Treatment Plan	51
VA-Oncology Lung Treatment Summary.....	54
PROSTATE CANCER:.....	59
VA-Oncology Prostate (update).....	59
VA-Oncology Prostate MDC	67
VA-Oncology Prostate Treatment Plan.....	71
VA-Oncology Prostate Treatment Summary	75
INSTALL DETAILS	83
INSTALL EXAMPLE TO LOAD THE WEB HOST FILE. NAVIGATE TO REMINDER EXCHANGE IN VISTA.....	83
POST INSTALLATION SET-UP INSTRUCTIONS	90



..... 96

Introduction

The purpose of this guide is to provide the Clinical Applications Coordinator/Health Informatics Specialist (CAC/HIS) with direction on the installation/implementation of the VA-Oncology reminder dialogs. These reminder dialogs were developed and are supported by the National Oncology Program Office in Specialty Care Services (part of Patient Care Services). Please contact Susan Hamilton-Hill for any questions/concerns at REDACTED.

The National Oncology Program Office seeks to provide tools to VA facilities to enable providers to format essential clinical data so that it is readily available for clinical care and to measure the quality of care in the VA in a prospective, timely, and cost-efficient manner. Using Reminder Dialogs in CPRS is one mechanism to support these goals. Reminder dialogs will include information necessary for quality assessment as defined by the National Quality Forum, ASCO's Quality Oncology Practice Initiative, and other reliable and up-to-date sources. Reminder dialogs will enable the standardization of clinical information necessary for quality indicators into a discrete format and obtain key elements to continuously monitor the quality of cancer care.

This installation guide is separated by cancer type (breast, lung, prostate, colorectal) that should help CAC/HIMs install in organized manner. Each cancer-type has 4 reminder dialogs that need to be installed (treatment plan, treatment summary, MDC, and stand-alone).

Reminder Dialogs

14 new reminder dialogs were created and updates to 2 oncology reminder dialogs (VA-Oncology Lung, VA-Oncology Prostate) are being distributed with this update. The VA-Oncology Lung and Prostate reminder dialogs were released with PXR2038 in January 2015. The updates to these reminder dialogs were mainly to add new FDA approved medications and clinical content based upon user feedback.

Breast Cancer

VA-Oncology Breast Components

VA-Oncology Breast Components

REMINDER SPONSOR
VHA ONCOLOGY

Health Factors

Oncology (ONC) Breast Diagnoses (Category)

ONC Breast ECOG PS Unknown
ONC Breast ECOG PS 5
ONC Breast ECOG PS 4
ONC Breast ECOG PS 3
ONC Breast ECOG PS 2
ONC Breast ECOG PS 1

ONC Breast ECOG PS 0

Oncology (ONC) Breast Treatments (Category)

ONC Breast Surgery Outcome-Unknown
ONC Breast Surgery Results Pending
ONC Breast Tumor Not Resectable
ONC Breast Surgery Outcome + Margins
ONC Breast Surgery Outcome-Clear Margins
ONC Breast Surgery-Other
ONC Breast Axillary Node Dissection
ONC Breast Surgery-Sentinel Node Removal
ONC Breast Surgery-Mastectomy
ONC Breast Surgery-Breast Conserving
ONC Breast Surgery Not Performed
ONC Breast Pt Declined Surgery
ONC Breast Surgery Not Recommended
ONC Breast Palliative Referral
ONC Breast Hospice Referral

Oncology (ONC) Breast Follow-Up (Category)

ONC Breast-Response Not Determined
ONC Breast-Progression of Disease
ONC Breast-No Evidence Recurrence
ONC Breast-Recurrence of Disease
ONC Breast-Stable Disease
ONC Breast-Partial Response
ONC Breast-Complete Response
ONC Breast Referral Not Appropriate
ONC Breast Referral Patient Declined
ONC Breast Referral
ONC Breast Referral Service Unavailable
ONC Breast Targeted Therapy-Complete
ONC Breast Targeted Therapy Stopped
ONC Breast Target Therapy Stopped by Pt
ONC Breast Targeted Therapy-Progression
ONC Breast Targeted Therapy-Toxicity
ONC Breast Targeted Therapy Stop Date
ONC Breast Targeted Therapy Start Date
ONC Breast Lapatinib Stop Date
ONC Breast Lapatinib Start Date
ONC Ado-Trastuzumab Emtansine Stop
ONC Ado-Trastuzumab Emtansine Start
ONC Breast Pertuzumab Start Date
ONC Breast Pertuzumab Stop Date
ONC Breast Trastuzumab Stop Date
ONC Breast Trastuzumab Start Date
ONC Hormone Therapy Not Administered
ONC Breast Pt Declined Targeted Therapy
ONC Targeted Therapy Not Recommended
ONC Targeted Therapy Not Administered
ONC Breast Hormone Therapy Stop Date
ONC Breast Hormone Therapy Start Date
ONC Breast Surg Ovarian Suppress Stop
ONC Breast Surg Ovarian Suppress Start
ONC Breast Med Ovarian Suppression Stop
ONC Breast Med Ovarian Suppression Start
ONC Breast Fulvestrant Stop Date

ONC Breast Fulvestrant Start Date
ONC Breast Aromatase Inhibitor Stop
ONC Breast Aromatase Inhibitor Start
ONC Breast Tamoxifen Stop Date
ONC Breast Tamoxifen Start Date
ONC Breast Hormone Therapy Stopped
ONC Breast Hormone Therapy Stopped by Pt
ONC Breast Hormone Therapy-Progression
ONC Breast Hormone Therapy-Toxicity
ONC Breast Hormone Therapy-Plan Complete
ONC Breast Pt Declined Hormone Therapy
ONC Hormone Therapy Not Recommended
ONC Breast RT Dose/Fraction
ONC Breast RT Total Dose
ONC Breast RT Stop Date
ONC Breast RT Start Date
ONC Breast RT Site:
ONC Breast RT Partial Dose/Fraction
ONC Breast RT Partial Breast Total Dose
ONC Breast RT Partial Breast Stop Date
ONC Breast RT Partial Breast Start Date
ONC Breast RT Intact Dose/Fraction
ONC Breast RT Intact Breast Total Dose
ONC Breast RT Intact Breast Stop Date
ONC Breast RT Intact Breast Start Date
ONC Breast RT Lymph Node Dose/Fraction
ONC Breast RT Lymph Node Total Dose
ONC Breast RT Lymph Node Stop Date
ONC Breast RT Lymph Node Start Date
ONC Breast RT Chest Wall Dose/Fraction
ONC Breast RT Chest Wall Total Dose
ONC Breast RT Chest Wall Stop Date
ONC Breast RT Chest Wall Start Date
ONC Breast RT Not Administered
ONC Breast RT Patient Declined
ONC Breast RT Not Recommended
ONC Breast RT Stopped-Patient Request
ONC Breast RT Stopped-Progression
ONC Breast RT Stopped-Other
ONC Breast RT Stopped-Toxicity
ONC Breast RT Stopped-Plan Completed
ONC Breast Trtment Intent-Not Determined
ONC Breast Treatment Discussion Unknown
ONC Breast Intent Was Not Discussed w/Pt
ONC Breast Intent Was Discussed w/Pt
ONC Breast Treatment Intent Palliative
ONC Breast Treatment Intent Concurrent
ONC Breast Treatment Single Modality
ONC Breast Treatment Intent NeoAdjuvant
ONC Breast Treatment Intent Adjuvant
ONC Breast Presented To Tumor Board-N/A
ONC Breast Presented to Tumor Board-No
ONC Breast Presented To Tumor Board-Yes
ONC Breast Chemo Stopped-Plan Completed
ONC Breast Chemo Stopped-Other

ONC Breast Chemo Stopped-Patient Request
ONC Breast Chemo Stopped-Progression
ONC Breast Chemo Stopped-Toxicity
ONC Docetaxel/Trastuzumab Stop Date
ONC Docetaxel/Trastuzumab Start Date
ONC Doxo/Cycloph/Docet/Trast Stop
ONC Doxo/Cycloph/Docet/Trast Start
ONC Breast Paclitaxel/Trastuzumab Stop
ONC Breast Paclitaxel/Trastuzumab Start
ONC Docet/Carbo/Trastuz/Pertuz Stop
ONC Docet/Carbo/Trastuz/Pertuz Start
ONC Docetaxel/Carboplatin/Trastuz Stop
ONC Docetaxel/Carboplatin/Trastuz Start
ONC Cyclophosphamide/Methotrex/5FU Stop
ONC Cyclophosphamide/Methotrex/5FU Start
ONC Cyclophosphamide/Docetaxel Stop
ONC Cyclophosphamide/Docetaxel Start
ONC Docetaxel/Doxorub/Cyclophosph Stop
ONC Docetaxel/Doxorub/Cyclophosph Start
ONC Doxo/Cyclophosph/Docetaxel Stop
ONC Doxo/Cyclophosph/Docetaxel Start
ONC Doxo/Cyclophosph/Paclitaxel Stop
ONC Doxo/Cyclophosph/Paclitaxel Start
ONC Doxorubicin/Cyclophosphamide Stop
ONC Doxorubicin/Cyclophosphamide Start
ONC Breast Everolimus Stop Date
ONC Breast Everolimus Start Date
ONC Breast Palociclib Stop Date
ONC Breast Palociclib Start Date
ONC Breast Single Drug Other Stop Date
ONC Breast Single Drug Other Start Date
ONC Breast Chemotherapy:
ONC Breast Eribulin Stop Date
ONC Breast Eribulin Start Date
ONC Breast Nab-Paclitaxel Stop Date
ONC Breast Nab-Paclitaxel Start Date
ONC Breast Gemcitabine Stop Date
ONC Breast Gemcitabine Start Date
ONC Breast Vinorelbine Stop Date
ONC Breast Vinorelbine Start Date
ONC Breast Cisplatin Stop Date
ONC Breast Cisplatin Start Date
ONC Breast Capectabine Stop Date
ONC Breast Capectabine Start Date
ONC Breast Paclitaxel Stop Date
ONC Breast Paclitaxel Start Date
ONC Breast Methotrexate Stop Date
ONC Breast Methotrexate Start Date
ONC Breast Epirubicin Stop Date
ONC Breast Epirubicin Start Date
ONC Breast Doxorubicin Stop Date
ONC Breast Doxorubicin Start Date
ONC Breast Docetaxel Stop Date
ONC Breast Docetaxel Start Date
ONC Breast Cyclophosphamide Stop Date

ONC Breast Cyclophosphamide Start Date
ONC Breast Chemo Not Admin-Other
ONC Breast Chemo Not Admin-Pt Declined
ONC Breast Chemo Not Recommended
ONC Breast Genetic Testing:
ONC Breast Genetics Counseling Not Given
ONC Breast Genetics Counseling Given
ONC Breast + P53
ONC Breast Neg P53
ONC Breast Genetic Variant P53
ONC Breast + PTEN
ONC Breast Neg PTEN
ONC Breast Genetic Variant PTEN
ONC Breast + BRCA2
ONC Breast Neg BRCA2
ONC Breast Genetic Variant BRCA2
ONC Breast + BRCA1
ONC Breast Neg BRCA1
ONC Breast Genetic Variant BRCA1
ONC Breast Unknown HER2
ONC Breast Neg HER2
ONC Breast + HER2
ONC Breast Unknown Estrogen Receptor
ONC Breast Neg Estrogen Receptor
ONC Breast + Estrogen Receptor
ONC Breast Unknown Progesterone Receptor
ONC Breast Neg Progesterone Receptor
ONC Breast + Progesterone Receptor
ONC Breast Cancer Type:
ONC Breast Phyllodes
ONC Breast Squamous Cell Carcinoma
ONC Breast Papillary
ONC Breast Mucinous
ONC Breast Medullary
ONC Breast Inflammatory
ONC Breast Invasive Lobular
ONC Breast Invasive Ductal
ONC Breast Paget's Disease
ONC Breast Papilloma
ONC Breast Ductal Carcinoma in Situ
ONC Breast Pathological Stage M1
ONC Breast Pathological Stage M0
ONC Breast Pathological Stage Mx
ONC Breast Pathological Stage N3b
ONC Breast Pathological Stage N3a
ONC Breast Pathological Stage N3
ONC Breast Pathological Stage N3c
ONC Breast Pathological Stage N2b
ONC Breast Pathological Stage N2a
ONC Breast Pathological Stage N2
ONC Breast Pathological Stage N1c
ONC Breast Pathological Stage N1b
ONC Breast Pathological Stage N1a
ONC Breast Pathological Stage N1mi
ONC Breast Pathological Stage N1

ONC Breast Pathological Stage N0(mol+)
ONC Breast Pathological Stage N0(mol-)
ONC Breast Pathological Stage N0(i+)
ONC Breast Pathological Stage N0(i-)
ONC Breast Pathological Stage N0
ONC Breast Pathological Stage Nx
ONC Breast Pathological Stage T4d
ONC Breast Pathological Stage T4c
ONC Breast Pathological Stage T4b
ONC Breast Pathological Stage T4a
ONC Breast Pathological Stage T4
ONC Breast Pathological Stage T3
ONC Breast Pathological Stage T2
ONC Breast Pathological Stage T1c
ONC Breast Pathological Stage T1b
ONC Breast Pathological Stage T1a
ONC Breast Pathological Stage T1mi
ONC Breast Pathological Stage T1
ONC Breast Path Tumor Tis (Paget's)
ONC Breast Path Tumor Stage Tis (LCIS)
ONC Breast Path Tumor Stage Tis (DCIS)
ONC Breast Pathological Tumor Stage Tis
ONC Breast Pathological Tumor Stage T0
ONC Breast Pathological Tumor Stage Tx
ONC Breast Pathological TNM Staging Date
ONC Breast Path Summary Stage IIA
ONC Breast Pathological Summary Stage IV
ONC Breast Path Summary Stage IIIC
ONC Breast Path Summary Stage IIIB
ONC Breast Path Summary Stage IIIA
ONC Breast Path Summary Stage IIB
ONC Breast Pathological Summary Stage IB
ONC Breast Pathological Summary Stage IA
ONC Breast Pathological Summary Stage 0
ONC Breast Clinical Stage M1
ONC Breast Clinical Stage M0(i+)
ONC Breast Clinical Stage M0
ONC Breast Clinical Stage Mx
ONC Breast Clinical Stage N3c
ONC Breast Clinical Stage N3b
ONC Breast Clinical Stage N3a
ONC Breast Clinical Stage N3
ONC Breast Clinical Stage N2b
ONC Breast Clinical Stage N2a
ONC Breast Clinical Stage N2
ONC Breast Clinical Stage N1
ONC Breast Clinical Stage N0
ONC Breast Clinical Stage Nx
ONC Breast Clinical Stage T4d
ONC Breast Clinical Stage T4c
ONC Breast Clinical Stage T4b
ONC Breast Clinical Stage T4a
ONC Breast Clinical Stage T4
ONC Breast Clinical Stage T3
ONC Breast Clinical Stage T2

ONC Breast Clinical Stage T1c
ONC Breast Clinical Stage T1b
ONC Breast Clinical Stage T1a
ONC Breast Clinical Stage T1mi
ONC Breast Clinical Stage T1
ONC Breast Clinical Stage Tis (Paget's)
ONC Breast Clinical Stage Tis (LCIS)
ONC Breast Clinical Stage Tis (DCIS)
ONC Breast Clinical Stage Tis
ONC Breast Clinical Stage T0
ONC Breast Clinical Stage Tx
ONC Breast Clinical TNM Staging Date
ONC Breast Clinical Summary Stage IIA
ONC Breast Clinical Summary Stage IV
ONC Breast Clinical Summary Stage IIIC
ONC Breast Clinical Summary Stage IIIB
ONC Breast Clinical Summary Stage IIIA
ONC Breast Clinical Summary Stage IIB
ONC Breast Clinical Summary Stage IB
ONC Breast Clinical Summary Stage IA
ONC Breast Clinical Summary Stage 0
ONC Breast High Risk Lesion:
ONC Breast Initial Pathology ADH/ALH
ONC Breast Initial Pathology-DCIS
ONC Breast Initial Pathology-Cancer
ONC Breast Modality of Diagnosis:
ONC Breast Excisional Biopsy
ONC Breast Incisional Biopsy
ONC Breast Stereotactic Core Biopsy
ONC Breast US Guided Core Biopsy
ONC Breast Date of Diagnosis
ONC Breast Abnormal Mammogram Date

TIU Template Field

WORD PROCESSING SHORT

Reminder Terms

VA-ONC BREAST ECOG RT
VA-ONC BREAST SURGERY RT
VA-ONC BREAST REFERRAL RT
VA-ONC BREAST FOLLOWUP RT
VA-ONC BREAST TARGET RT
VA-ONC BREAST HORMONE RT
VA-ONC BREAST RT RT
VA-ONC BREAST TREATMENT RT
VA-ONC BREAST TUMOR BOARD RT
VA-ONC BREAST CHEMO RT
VA-ONC BREAST GENETIC TEST RT
VA-ONC BREAST PROGNOSTIC RT
VA-ONC BREAST HISTOLOGY RT
VA-ONC BREAST STAGE RT
VA-ONC BREAST PATH RT
VA-ONC BREAST MODAILITY RT
VA-ONC BREAST DX DATE RT
VA-ONC BREAST MAMMO RT

VA-ONC BREAST TITLE RT

HEALTH SUMMARY COMPONENT

PCE HEALTH FACTORS SELECTED

Health Summary Types

VA-ONC BREAST ECOG
VA-ONC BREAST SURGERY
VA-ONC BREAST FOLLOWUP
VA-ONC BREAST TARGET
VA-ONC BREAST HORMONE
VA-ONC BREAST RT
VA-ONC BREAST TREATMENT
VA-ONC BREAST TUMOR BOARD
VA-ONC BREAST CHEMO
VA-ONC BREAST GENETIC
VA-ONC BREAST PROGNOSTIC
VA-ONC BREAST HISTOLOGY
VA-ONC BREAST STAGE
VA-ONC BREAST PATHOLOGY
VA-ONC BREAST MODALITY
VA-ONC BREAST DX DATE
VA-ONC BREAST AB MAMMO
VA-ONC BREAST HEADER 3
VA-ONC BREAST HEADER 2
VA-ONC BREAST HEADER 1

Health Summary Objects

VA-ONC BREAST ECOG
VA-ONC BREAST SURGERY
VA-ONC BREAST FOLLOWUP
VA-ONC BREAST TARGET
VA-ONC BREAST HORMONE
VA-ONC BREAST RT
VA-ONC BREAST TREATMENT
VA-ONC BREAST TUMOR BOARD
VA-ONC BREAST CHEMO
VA-ONC BREAST GENETIC
VA-ONC BREAST PROGNOSTIC
VA-ONC BREAST HISTOLOGY
VA-ONC BREAST STAGE
VA-ONC BREAST PATHOLOGY
VA-ONC BREAST MODALITY
VA-ONC BREAST DX DATE
VA-ONC BREAST AB MAMMO
VA-ONC BREAST HEADER 3
VA-ONC BREAST HEADER 2
VA-ONC BREAST HEADER 1

TIU Definition

VA-ONC BREAST ECOG
VA-ONC BREAST SURGERY
VA-ONC BREAST FOLLOWUP
VA-ONC BREAST TARGET
VA-ONC BREAST HORMONE

VA-ONC BREAST RT
VA-ONC BREAST TREATMENT
VA-ONC BREAST TUMOR BOARD
VA-ONC BREAST CHEMO
VA-ONC BREAST GENETIC
VA-ONC BREAST PROGNOSTIC
VA-ONC BREAST HISTOLOGY
VA-ONC BREAST STAGE
VA-ONC BREAST PATHOLOGY
VA-ONC BREAST MODALITY
VA-ONC BREAST DX DATE
VA-ONC BREAST AB MAMMO
VA-ONC BREAST HEADER 3
VA-ONC BREAST HEADER 2
VA-ONC BREAST HEADER 1

VA-Oncology Breast MDC

BREAST MDC COMPONENTS

TIU TEMPLATE FIELD

ALLCOMMENT(4LINES)
ONC MDC CLICK HERE TO INCLUDE
GEN TEXT BOX 50
00 EDIT BOX 24X

HEALTH FACTORS

Oncology (ONC) Breast Diagnoses (Category)
ONC Breast Tissue Sample Sent to POP
ONC Breast Tissue Sample Sent
ONC Breast Genetic Testing:
ONC Breast Genetics Counseling Not Given
ONC Breast Genetics Counseling Given
ONC Breast + P53
ONC Breast Neg P53
ONC Breast Genetic Variant P53
ONC Breast + PTEN
ONC Breast Neg PTEN
ONC Breast Genetic Variant PTEN
ONC Breast + BRCA2
ONC Breast Neg BRCA2
ONC Breast Genetic Variant BRCA2
ONC Breast + BRCA1
ONC Breast Neg BRCA1
ONC Breast Genetic Variant BRCA1
ONC Breast Unknown HER2
ONC Breast Neg HER2
ONC Breast + HER2
ONC Breast Unknown Estrogen Receptor
ONC Breast Neg Estrogen Receptor
ONC Breast + Estrogen Receptor
ONC Breast Unknown Progesterone Receptor
ONC Breast Neg Progesterone Receptor
ONC Breast + Progesterone Receptor
ONC Breast Cancer Type:

ONC Breast Phyllodes
ONC Breast Squamous Cell Carcinoma
ONC Breast Papillary
ONC Breast Mucinous
ONC Breast Medullary
ONC Breast Inflammatory
ONC Breast Invasive Lobular
ONC Breast Invasive Ductal
ONC Breast Paget's Disease
ONC Breast Papilloma
ONC Breast Ductal Carcinoma in Situ
ONC Breast High Risk Lesion:
ONC Breast Initial Pathology ADH/ALH
ONC Breast Initial Pathology-DCIS
ONC Breast Initial Pathology-Cancer
ONC Breast Pathological Stage M1
ONC Breast Pathological Stage M0
ONC Breast Pathological Stage Mx
ONC Breast Pathological Stage N3b
ONC Breast Pathological Stage N3a
ONC Breast Pathological Stage N3
ONC Breast Pathological Stage N3c
ONC Breast Pathological Stage N2b
ONC Breast Pathological Stage N2a
ONC Breast Pathological Stage N2
ONC Breast Pathological Stage N1c
ONC Breast Pathological Stage N1b
ONC Breast Pathological Stage N1a
ONC Breast Pathological Stage N1mi
ONC Breast Pathological Stage N1
ONC Breast Pathological Stage N0(mol+)
ONC Breast Pathological Stage N0(mol-)
ONC Breast Pathological Stage N0(i+)
ONC Breast Pathological Stage N0(i-)
ONC Breast Pathological Stage N0
ONC Breast Pathological Stage Nx
ONC Breast Pathological Stage T4d
ONC Breast Pathological Stage T4c
ONC Breast Pathological Stage T4b
ONC Breast Pathological Stage T4a
ONC Breast Pathological Stage T4
ONC Breast Pathological Stage T3
ONC Breast Pathological Stage T2
ONC Breast Pathological Stage T1c
ONC Breast Pathological Stage T1b
ONC Breast Pathological Stage T1a
ONC Breast Pathological Stage T1mi
ONC Breast Pathological Stage T1
ONC Breast Path Tumor Tis (Paget's)
ONC Breast Path Tumor Stage Tis (LCIS)
ONC Breast Path Tumor Stage Tis (DCIS)
ONC Breast Pathological Tumor Stage Tis
ONC Breast Pathological Tumor Stage T0
ONC Breast Pathological Tumor Stage Tx
ONC Breast Pathological TNM Staging Date

ONC Breast Path Summary Stage IIA
ONC Breast Pathological Summary Stage IV
ONC Breast Path Summary Stage IIIC
ONC Breast Path Summary Stage IIIB
ONC Breast Path Summary Stage IIIA
ONC Breast Path Summary Stage IIB
ONC Breast Pathological Summary Stage IB
ONC Breast Pathological Summary Stage IA
ONC Breast Pathological Summary Stage 0
ONC Breast Clinical Stage M1
ONC Breast Clinical Stage M0(i+)
ONC Breast Clinical Stage M0
ONC Breast Clinical Stage Mx
ONC Breast Clinical Stage N3c
ONC Breast Clinical Stage N3b
ONC Breast Clinical Stage N3a
ONC Breast Clinical Stage N3
ONC Breast Clinical Stage N2b
ONC Breast Clinical Stage N2a
ONC Breast Clinical Stage N2
ONC Breast Clinical Stage N1
ONC Breast Clinical Stage N0
ONC Breast Clinical Stage Nx
ONC Breast Clinical Stage T4d
ONC Breast Clinical Stage T4c
ONC Breast Clinical Stage T4b
ONC Breast Clinical Stage T4a
ONC Breast Clinical Stage T4
ONC Breast Clinical Stage T3
ONC Breast Clinical Stage T2
ONC Breast Clinical Stage T1c
ONC Breast Clinical Stage T1b
ONC Breast Clinical Stage T1a
ONC Breast Clinical Stage T1mi
ONC Breast Clinical Stage T1
ONC Breast Clinical Stage Tis (Paget's)
ONC Breast Clinical Stage Tis (LCIS)
ONC Breast Clinical Stage Tis (DCIS)
ONC Breast Clinical Stage Tis
ONC Breast Clinical Stage T0
ONC Breast Clinical Stage Tx
ONC Breast Clinical TNM Staging Date
ONC Breast Clinical Summary Stage IIA
ONC Breast Clinical Summary Stage IV
ONC Breast Clinical Summary Stage IIIC
ONC Breast Clinical Summary Stage IIIB
ONC Breast Clinical Summary Stage IIIA
ONC Breast Clinical Summary Stage IIB
ONC Breast Clinical Summary Stage IB
ONC Breast Clinical Summary Stage IA
ONC Breast Clinical Summary Stage 0
ONC Breast Date of Diagnosis
ONC Breast ECOG PS Unknown
ONC Breast ECOG PS 5
ONC Breast ECOG PS 4

ONC Breast ECOG PS 3
ONC Breast ECOG PS 2
ONC Breast ECOG PS 1
ONC Breast ECOG PS 0
Oncology (ONC) Breast Treatments
ONC Breast Presented To Tumor Board-Yes

REMINDER SPONSOR

VHA ONCOLOGY

REMINDER TERM

VA-ONC BREAST GENETIC TEST RT
VA-ONC BREAST PROGNOSTIC RT
VA-ONC BREAST HISTOLOGY RT
VA-ONC BREAST PATH RT
VA-ONC BREAST STAGE RT
VA-ONC BREAST DX DATE RT
VA-ONC BREAST ECOG RT

REMINDER DIALOG

VA-ONCOLOGY MDC BREAST

HEALTH SUMMARY COMPONENT

LAB CYTOPATHOLOGY
LAB SURGICAL PATHOLOGY
SURGERY REPORTS BRIEF
IMAGING IMPRESSION

PCE HEALTH FACTORS SELECTED

VA-ONC MDC PATH
VA-ONC MDC SURGERY
VA-ONC MDC RADIOLOGY
VA-ONC BREAST GENETIC
VA-ONC BREAST PROGNOSTIC
VA-ONC BREAST HISTOLOGY
VA-ONC BREAST PATHOLOGY
VA-ONC BREAST STAGE
VA-ONC BREAST DX DATE
VA-ONC BREAST ECOG

HEALTH SUMMARY OBJECTS

VA-ONC MDC THORACIC PATH
VA-ONC MDC THORACIC SURGERY
VA-ONC MDC THORACIC RADIOLOGY
VA-ONC BREAST GENETIC
VA-ONC BREAST PROGNOSTIC
VA-ONC BREAST HISTOLOGY
VA-ONC BREAST PATHOLOGY
VA-ONC BREAST STAGE
VA-ONC BREAST DX DATE
VA-ONC BREAST ECOG

TIU DOCUMENT DEFINITION

VA-ONC MDC PATH
VA-ONC MDC SURGERY

VA-ONC MDC RADIOLOGY
VA-ONC BREAST GENETIC
VA-ONC BREAST PROGNOSTIC
VA-ONC BREAST HISTOLOGY
VA-ONC BREAST PATHOLOGY
VA-ONC BREAST STAGE
VA-ONC BREAST DX DATE
VA-ONC BREAST ECOG

VA-Oncology Breast Treatment Plan

VA-ONCOLOGY TREATMENT PLAN BREAST

Health Factors

Oncology (ONC) Breast Treatments (Category)
ONC Breast Chemo Not Admin-Other
ONC Breast Chemo Not Admin-Pt Declined
ONC Breast Chemo Not Recommended
Oncology (ONC) Colorectal (CRC) Treatmnt (Category)
ONC CRC Consent for Chemo Not Obtained
ONC CRC Consent for Chemo Obtained
ONC Breast RT Dose/Fraction
ONC Breast RT Total Dose
ONC Breast RT Stop Date
ONC Breast RT Start Date
ONC Breast RT Site:
ONC Breast RT Partial Dose/Fraction
ONC Breast RT Partial Breast Total Dose
ONC Breast RT Partial Breast Stop Date
ONC Breast RT Partial Breast Start Date
ONC Breast RT Intact Dose/Fraction
ONC Breast RT Intact Breast Total Dose
ONC Breast RT Intact Breast Stop Date
ONC Breast RT Intact Breast Start Date
ONC Breast RT Lymph Node Dose/Fraction
ONC Breast RT Lymph Node Total Dose
ONC Breast RT Lymph Node Stop Date
ONC Breast RT Lymph Node Start Date
ONC Breast RT Chest Wall Dose/Fraction
ONC Breast RT Chest Wall Total Dose
ONC Breast RT Chest Wall Stop Date
ONC Breast RT Chest Wall Start Date
ONC Breast RT Not Administered
ONC Breast RT Patient Declined
ONC Breast RT Not Recommended
ONC Breast RT Stopped-Patient Request
ONC Breast RT Stopped-Progression
ONC Breast RT Stopped-Other
ONC Breast RT Stopped-Toxicity
ONC Breast RT Stopped-Plan Completed
ONC Breast Surgery Outcome-Unknown
ONC Breast Surgery Results Pending

ONC Breast Tumor Not Resectable
ONC Breast Surgery Outcome + Margins
ONC Breast Surgery Outcome-Clear Margins
ONC Breast Surgery-Other
ONC Breast Axillary Node Dissection
ONC Breast Surgery-Sentinel Node Removal
ONC Breast Surgery-Mastectomy
ONC Breast Surgery-Breast Conserving
ONC Breast Surgery Not Performed
ONC Breast Pt Declined Surgery
ONC Breast Surgery Not Recommended
ONC Breast Trtment Intent-Not Determined
ONC Breast Treatment Discussion Unknown
ONC Breast Intent Was Not Discussed w/Pt
ONC Breast Intent Was Discussed w/Pt
ONC Breast Treatment Intent Palliative
ONC Breast Treatment Intent Concurrent
ONC Breast Treatment Single Modality
ONC Breast Treatment Intent NeoAdjuvant
ONC Breast Treatment Intent Adjuvant
Oncology (ONC) Breast Diagnoses
ONC Breast Cancer Type:
ONC Breast Phyllodes
ONC Breast Squamous Cell Carcinoma
ONC Breast Papillary
ONC Breast Mucinous
ONC Breast Medullary
ONC Breast Inflammatory
ONC Breast Invasive Lobular
ONC Breast Invasive Ductal
ONC Breast Paget's Disease
ONC Breast Papilloma
ONC Breast Ductal Carcinoma in Situ
ONC Breast Pathological Stage M1
ONC Breast Pathological Stage M0
ONC Breast Pathological Stage Mx
ONC Breast Pathological Stage N3b
ONC Breast Pathological Stage N3a
ONC Breast Pathological Stage N3
ONC Breast Pathological Stage N3c
ONC Breast Pathological Stage N2b
ONC Breast Pathological Stage N2a
ONC Breast Pathological Stage N2
ONC Breast Pathological Stage N1c
ONC Breast Pathological Stage N1b
ONC Breast Pathological Stage N1a
ONC Breast Pathological Stage N1mi
ONC Breast Pathological Stage N1
ONC Breast Pathological Stage N0(mol+)
ONC Breast Pathological Stage N0(mol-)
ONC Breast Pathological Stage N0(i+)

ONC Breast Pathological Stage N0(i-)
ONC Breast Pathological Stage N0
ONC Breast Pathological Stage Nx
ONC Breast Pathological Stage T4d
ONC Breast Pathological Stage T4c
ONC Breast Pathological Stage T4b
ONC Breast Pathological Stage T4a
ONC Breast Pathological Stage T4
ONC Breast Pathological Stage T3
ONC Breast Pathological Stage T2
ONC Breast Pathological Stage T1c
ONC Breast Pathological Stage T1b
ONC Breast Pathological Stage T1a
ONC Breast Pathological Stage T1mi
ONC Breast Pathological Stage T1
ONC Breast Path Tumor Tis (Paget's)
ONC Breast Path Tumor Stage Tis (LCIS)
ONC Breast Path Tumor Stage Tis (DCIS)
ONC Breast Pathological Tumor Stage Tis
ONC Breast Pathological Tumor Stage T0
ONC Breast Pathological Tumor Stage Tx
ONC Breast Pathological TNM Staging Date
ONC Breast Path Summary Stage IIA
ONC Breast Pathological Summary Stage IV
ONC Breast Path Summary Stage IIIC
ONC Breast Path Summary Stage IIIB
ONC Breast Path Summary Stage IIIA
ONC Breast Path Summary Stage IIB
ONC Breast Pathological Summary Stage IB
ONC Breast Pathological Summary Stage IA
ONC Breast Pathological Summary Stage 0
ONC Breast Clinical Stage M1
ONC Breast Clinical Stage M0(i+)
ONC Breast Clinical Stage M0
ONC Breast Clinical Stage Mx
ONC Breast Clinical Stage N3c
ONC Breast Clinical Stage N3b
ONC Breast Clinical Stage N3a
ONC Breast Clinical Stage N3
ONC Breast Clinical Stage N2b
ONC Breast Clinical Stage N2a
ONC Breast Clinical Stage N2
ONC Breast Clinical Stage N1
ONC Breast Clinical Stage N0
ONC Breast Clinical Stage Nx
ONC Breast Clinical Stage T4d
ONC Breast Clinical Stage T4c
ONC Breast Clinical Stage T4b
ONC Breast Clinical Stage T4a
ONC Breast Clinical Stage T4
ONC Breast Clinical Stage T3

ONC Breast Clinical Stage T2
ONC Breast Clinical Stage T1c
ONC Breast Clinical Stage T1b
ONC Breast Clinical Stage T1a
ONC Breast Clinical Stage T1mi
ONC Breast Clinical Stage T1
ONC Breast Clinical Stage Tis (Paget's)
ONC Breast Clinical Stage Tis (LCIS)
ONC Breast Clinical Stage Tis (DCIS)
ONC Breast Clinical Stage Tis
ONC Breast Clinical Stage T0
ONC Breast Clinical Stage Tx
ONC Breast Clinical TNM Staging Date
ONC Breast Clinical Summary Stage IIA
ONC Breast Clinical Summary Stage IV
ONC Breast Clinical Summary Stage IIIC
ONC Breast Clinical Summary Stage IIIB
ONC Breast Clinical Summary Stage IIIA
ONC Breast Clinical Summary Stage IIB
ONC Breast Clinical Summary Stage IB
ONC Breast Clinical Summary Stage IA
ONC Breast Clinical Summary Stage 0
ONC Breast High Risk Lesion:
ONC Breast Initial Pathology ADH/ALH
ONC Breast Initial Pathology-DCIS
ONC Breast Initial Pathology-Cancer
ONC Breast Date of Diagnosis

REMINDER SPONSOR

VHA ONCOLOGY

REMINDER TERMS

VA-ONC BREAST RT RT
VA-ONC BREAST SURGERY RT
VA-ONC BREAST TREATMENT RT
VA-ONC BREAST HISTOLOGY RT
VA-ONC BREAST STAGE RT
VA-ONC BREAST PATH RT

HEALTH SUMMARY COMPONENT

PCE HEALTH FACTORS SELECTED

HEALTH SUMMARY TYPE

VA-ONC BREAST RT
VA-ONC BREAST SURGERY
VA-ONC BREAST TREATMENT
VA-ONC BREAST HISTOLOGY
VA-ONC BREAST STAGE
VA-ONC BREAST PATHOLOGY
VA-ONC BREAST DX DATE

HEALTH SUMMARY OBJECTS

VA-ONC BREAST RT
VA-ONC BREAST SURGERY
VA-ONC BREAST TREATMENT
VA-ONC BREAST HISTOLOGY
VA-ONC BREAST STAGE
VA-ONC BREAST PATHOLOGY
VA-ONC BREAST DX DATE

TIU DOCUMENT DEFINITION

VA-ONC BREAST RT
VA-ONC BREAST SURGERY
VA-ONC BREAST TREATMENT
VA-ONC BREAST HISTOLOGY
VA-ONC BREAST STAGE
VA-ONC BREAST PATHOLOGY
VA-ONC BREAST DX DATE
PATIENT HEIGHT
PATIENT WEIGHT
PATIENT DATE OF BIRTH
PATIENT NAME

VA-Oncology Breast Treatment Summary**VA-ONCOLOGY BREAST TREATMENT SUMMARY****HEALTH FACTORS**

Oncology (ONC) Breast Diagnoses (Category)
ONC Breast Genetic Testing:
ONC Breast Genetics Counseling Not Given
ONC Breast Genetics Counseling Given
ONC Breast + P53
ONC Breast Neg P53
ONC Breast Genetic Variant P53
ONC Breast + PTEN
ONC Breast Neg PTEN
ONC Breast Genetic Variant PTEN
ONC Breast + BRCA2
ONC Breast Neg BRCA2
ONC Breast Genetic Variant BRCA2
ONC Breast + BRCA1
ONC Breast Neg BRCA1
ONC Breast Genetic Variant BRCA1
ONC Breast Unknown HER2
ONC Breast Neg HER2
ONC Breast + HER2
ONC Breast Unknown Estrogen Receptor
ONC Breast Neg Estrogen Receptor
ONC Breast + Estrogen Receptor
ONC Breast Unknown Progesterone Receptor
ONC Breast Neg Progesterone Receptor
ONC Breast + Progesterone Receptor
ONC Breast Cancer Type:

ONC Breast Phyllodes
ONC Breast Squamous Cell Carcinoma
ONC Breast Papillary
ONC Breast Mucinous
ONC Breast Medullary
ONC Breast Inflammatory
ONC Breast Invasive Lobular
ONC Breast Invasive Ductal
ONC Breast Paget's Disease
ONC Breast Papilloma
ONC Breast Ductal Carcinoma in Situ
Oncology (ONC) Breast Follow-Up (Category)
ONC Breast Complications From Treatment
ONC Breast-Response Not Determined
ONC Breast-Recurrence of Disease
ONC Breast-No Evidence Recurrence
ONC Breast-Progression of Disease
ONC Breast-Stable Disease
ONC Breast-Partial Response
ONC Breast-Complete Response
Oncology (ONC) Breast Treatments (Category)
ONC Breast Targeted Therapy-Complete
ONC Breast Targeted Therapy Stopped
ONC Breast Target Therapy Stopped by Pt
ONC Breast Targeted Therapy-Progression
ONC Breast Targeted Therapy-Toxicity
ONC Breast Targeted Therapy Stop Date
ONC Breast Targeted Therapy Start Date
ONC Breast Lapatinib Stop Date
ONC Breast Lapatinib Start Date
ONC Ado-Trastuzumab Emtansine Stop
ONC Ado-Trastuzumab Emtansine Start
ONC Breast Pertuzumab Stop Date
ONC Breast Pertuzumab Start Date
ONC Breast Trastuzumab Stop Date
ONC Breast Trastuzumab Start Date
ONC Hormone Therapy Not Administered
ONC Breast Pt Declined Targeted Therapy
ONC Targeted Therapy Not Recommended
ONC Breast Hormone Therapy-Plan Complete
ONC Breast Hormone Therapy Stopped
ONC Breast Hormone Therapy Stopped by Pt
ONC Breast Hormone Therapy-Progression
ONC Breast Hormone Therapy-Toxicity
ONC Breast Hormone Therapy Stop Date
ONC Breast Hormone Therapy Start Date
ONC Breast Surg Ovarian Suppress Stop
ONC Breast Surg Ovarian Suppress Start
ONC Breast Med Ovarian Suppression Stop
ONC Breast Med Ovarian Suppression Start
ONC Breast Fulvestrant Stop Date
ONC Breast Fulvestrant Start Date
ONC Breast Aromatase Inhibitor Stop
ONC Breast Aromatase Inhibitor Start
ONC Breast Tamoxifen Stop Date

ONC Breast Tamoxifen Start Date
ONC Breast Pt Declined Hormone Therapy
ONC Hormone Therapy Not Recommended
ONC Breast Surgery Outcome-Unknown
ONC Breast Surgery Results Pending
ONC Breast Tumor Not Resectable
ONC Breast Surgery Outcome + Margins
ONC Breast Surgery Outcome-Clear Margins
ONC Breast Surgery-Other
ONC Breast Axillary Node Dissection
ONC Breast Surgery-Sentinel Node Removal
ONC Breast Surgery-Mastectomy
ONC Breast Surgery-Breast Conserving
ONC Breast Surgery Not Performed
ONC Breast Pt Declined Surgery
ONC Breast Surgery Not Recommended
ONC Breast RT Dose/Fraction
ONC Breast RT Total Dose
ONC Breast RT Stop Date
ONC Breast RT Start Date
ONC Breast RT Site:
ONC Breast RT Partial Dose/Fraction
ONC Breast RT Partial Breast Total Dose
ONC Breast RT Partial Breast Stop Date
ONC Breast RT Partial Breast Start Date
ONC Breast RT Intact Dose/Fraction
ONC Breast RT Intact Breast Total Dose
ONC Breast RT Intact Breast Stop Date
ONC Breast RT Intact Breast Start Date
ONC Breast RT Lymph Node Dose/Fraction
ONC Breast RT Lymph Node Total Dose
ONC Breast RT Lymph Node Stop Date
ONC Breast RT Lymph Node Start Date
ONC Breast RT Chest Wall Dose/Fraction
ONC Breast RT Chest Wall Total Dose
ONC Breast RT Chest Wall Stop Date
ONC Breast RT Chest Wall Start Date
ONC Breast RT Stopped-Patient Request
ONC Breast RT Stopped-Progression
ONC Breast RT Stopped-Other
ONC Breast RT Stopped-Toxicity
ONC Breast RT Stopped-Plan Completed
ONC Breast RT Not Administered
ONC Breast RT Patient Declined
ONC Breast RT Not Recommended
ONC Breast Chemo Stopped-Plan Completed
ONC Breast Chemo Stopped-Other
ONC Breast Chemo Stopped-Patient Request
ONC Breast Chemo Stopped-Progression
ONC Breast Chemo Stopped-Toxicity
ONC Docetaxel/Trastuzumab Stop Date
ONC Docetaxel/Trastuzumab Start Date
ONC Doxo/Cycloph/Docet/Trast Stop
ONC Doxo/Cycloph/Docet/Trast Start
ONC Breast Paclitaxel/Trastuzumab Stop

ONC Breast Paclitaxel/Trastuzumab Start
 ONC Docet/Carbo/Trastuz/Pertuz Stop
 ONC Docet/Carbo/Trastuz/Pertuz Start
 ONC Docetaxel/Carboplatin/Trastuz Stop
 ONC Docetaxel/Carboplatin/Trastuz Start
 ONC Cyclophosphamide/Methotrex/5FU Stop
 ONC Cyclophosphamide/Methotrex/5FU Start
 ONC Cyclophosphamide/Docetaxel Stop
 ONC Cyclophosphamide/Docetaxel Start
 ONC Docetaxel/Doxorub/Cyclophosph Stop
 ONC Docetaxel/Doxorub/Cyclophosph Start
 ONC Doxo/Cyclophosph/Docetaxel Stop
 ONC Doxo/Cyclophosph/Docetaxel Start
 ONC Doxo/Cyclophosph/Paclitaxel Stop
 ONC Doxo/Cyclophosph/Paclitaxel Start
 ONC Doxorubicin/Cyclophosphamide Stop
 ONC Doxorubicin/Cyclophosphamide Start
 ONC Breast Everolimus Stop Date
 ONC Breast Everolimus Start Date
 ONC Breast Palociclib Stop Date
 ONC Breast Palociclib Start Date
 ONC Breast Single Drug Other Stop Date
 ONC Breast Single Drug Other Start Date
 ONC Breast Chemotherapy:
 ONC Breast Eribulin Stop Date
 ONC Breast Eribulin Start Date
 ONC Breast Nab-Paclitaxel Stop Date
 ONC Breast Nab-Paclitaxel Start Date
 ONC Breast Gemcitabine Stop Date
 ONC Breast Gemcitabine Start Date
 ONC Breast Vinorelbine Stop Date
 ONC Breast Vinorelbine Start Date
 ONC Breast Cisplatin Stop Date
 ONC Breast Cisplatin Start Date
 ONC Breast Capectabine Stop Date
 ONC Breast Capectabine Start Date
 ONC Breast Paclitaxel Stop Date
 ONC Breast Paclitaxel Start Date
 ONC Breast Methotrexate Stop Date
 ONC Breast Methotrexate Start Date
 ONC Breast Epirubicin Stop Date
 ONC Breast Epirubicin Start Date
 ONC Breast Doxorubicin Stop Date
 ONC Breast Doxorubicin Start Date
 ONC Breast Docetaxel Stop Date
 ONC Breast Docetaxel Start Date
 ONC Breast Cyclophosphamide Stop Date
 ONC Breast Cyclophosphamide Start Date
 ONC Breast Chemo Not Admin-Other
 ONC Breast Chemo Not Admin-Pt Declined
 ONC Breast Chemo Not Recommended
 Oncology (ONC) Colorectal (CRC) FollowUp
 ONC CRC Future Plan Other
 ONC CRC Future Plan Observation
 ONC CRC Future Plan Surgery

ONC CRC Future Plan Radiation Therapy
ONC CRC Future Plan Chemotherapy
ONC Breast ECOG PS Unknown
ONC Breast ECOG PS 5
ONC Breast ECOG PS 4
ONC Breast ECOG PS 3
ONC Breast ECOG PS 2
ONC Breast ECOG PS 1
ONC Breast ECOG PS 0
ONC Breast High Risk Lesion:
ONC Breast Initial Pathology ADH/ALH
ONC Breast Initial Pathology-DCIS
ONC Breast Initial Pathology-Cancer
ONC Breast Pathological Stage M1
ONC Breast Pathological Stage M0
ONC Breast Pathological Stage Mx
ONC Breast Pathological Stage N3b
ONC Breast Pathological Stage N3a
ONC Breast Pathological Stage N3
ONC Breast Pathological Stage N3c
ONC Breast Pathological Stage N2b
ONC Breast Pathological Stage N2a
ONC Breast Pathological Stage N2
ONC Breast Pathological Stage N1c
ONC Breast Pathological Stage N1b
ONC Breast Pathological Stage N1a
ONC Breast Pathological Stage N1mi
ONC Breast Pathological Stage N1
ONC Breast Pathological Stage N0(mol+)
ONC Breast Pathological Stage N0(mol-)
ONC Breast Pathological Stage N0(i+)
ONC Breast Pathological Stage N0(i-)
ONC Breast Pathological Stage N0
ONC Breast Pathological Stage Nx
ONC Breast Pathological Stage T4d
ONC Breast Pathological Stage T4c
ONC Breast Pathological Stage T4b
ONC Breast Pathological Stage T4a
ONC Breast Pathological Stage T4
ONC Breast Pathological Stage T3
ONC Breast Pathological Stage T2
ONC Breast Pathological Stage T1c
ONC Breast Pathological Stage T1b
ONC Breast Pathological Stage T1a
ONC Breast Pathological Stage T1mi
ONC Breast Pathological Stage T1
ONC Breast Path Tumor Tis (Paget's)
ONC Breast Path Tumor Stage Tis (LCIS)
ONC Breast Path Tumor Stage Tis (DCIS)
ONC Breast Pathological Tumor Stage Tis
ONC Breast Pathological Tumor Stage T0
ONC Breast Pathological Tumor Stage Tx
ONC Breast Pathological TNM Staging Date
ONC Breast Path Summary Stage IIA
ONC Breast Pathological Summary Stage IV

ONC Breast Path Summary Stage IIIC
ONC Breast Path Summary Stage IIIB
ONC Breast Path Summary Stage IIIA
ONC Breast Path Summary Stage IIB
ONC Breast Pathological Summary Stage IB
ONC Breast Pathological Summary Stage IA
ONC Breast Pathological Summary Stage 0
ONC Breast Clinical Stage M1
ONC Breast Clinical Stage M0(i+)
ONC Breast Clinical Stage M0
ONC Breast Clinical Stage Mx
ONC Breast Clinical Stage N3c
ONC Breast Clinical Stage N3b
ONC Breast Clinical Stage N3a
ONC Breast Clinical Stage N3
ONC Breast Clinical Stage N2b
ONC Breast Clinical Stage N2a
ONC Breast Clinical Stage N2
ONC Breast Clinical Stage N1
ONC Breast Clinical Stage N0
ONC Breast Clinical Stage Nx
ONC Breast Clinical Stage T4d
ONC Breast Clinical Stage T4c
ONC Breast Clinical Stage T4b
ONC Breast Clinical Stage T4a
ONC Breast Clinical Stage T4
ONC Breast Clinical Stage T3
ONC Breast Clinical Stage T2
ONC Breast Clinical Stage T1c
ONC Breast Clinical Stage T1b
ONC Breast Clinical Stage T1a
ONC Breast Clinical Stage T1mi
ONC Breast Clinical Stage T1
ONC Breast Clinical Stage Tis (Paget's)
ONC Breast Clinical Stage Tis (LCIS)
ONC Breast Clinical Stage Tis (DCIS)
ONC Breast Clinical Stage Tis
ONC Breast Clinical Stage T0
ONC Breast Clinical Stage Tx
ONC Breast Clinical TNM Staging Date
ONC Breast Clinical Summary Stage IIA
ONC Breast Clinical Summary Stage IV
ONC Breast Clinical Summary Stage IIIC
ONC Breast Clinical Summary Stage IIIB
ONC Breast Clinical Summary Stage IIIA
ONC Breast Clinical Summary Stage IIB
ONC Breast Clinical Summary Stage IB
ONC Breast Clinical Summary Stage IA
ONC Breast Clinical Summary Stage 0
ONC Breast Date of Diagnosis

TIU TEMPLATE FIELD

00 EDIT BOX 24
TEXT (1-60 CHAR)1

ONCOLOGY TRTMENT SYMPTOM
ONC FUTURE VISITS

REMINDER SPONSOR
VHA ONCOLOGY

HEALTH SUMMARY COMPONENT
PCE HEALTH FACTORS SELECTED

HEALTH SUMMARY TYPE
VA-ONC BREAST GENETIC
VA-ONC BREAST PROGNOSTIC
VA-ONC BREAST HISTOLOGY
VA-ONC BREAST FOLLOWUP
VA-ONC BREAST TARGET
VA-ONC BREAST HORMONE
VA-ONC BREAST SURGERY
VA-ONC BREAST RT
VA-ONC BREAST CHEMO
VA-ONC BREAST ECOG
VA-ONC BREAST PATHOLOGY
VA-ONC BREAST STAGE
VA-ONC BREAST DX DATE

HEALTH SUMMARY OBJECTS
VA-ONC BREAST GENETIC
VA-ONC BREAST PROGNOSTIC
VA-ONC BREAST HISTOLOGY
VA-ONC BREAST FOLLOWUP
VA-ONC BREAST TARGET
VA-ONC BREAST HORMONE
VA-ONC BREAST SURGERY
VA-ONC BREAST RT
VA-ONC BREAST CHEMO
VA-ONC BREAST ECOG
VA-ONC BREAST PATHOLOGY
VA-ONC BREAST STAGE
VA-ONC BREAST DX DATE

TIU DOCUMENT DEFINITION
VA-ONC BREAST GENETIC
VA-ONC BREAST PROGNOSTIC
VA-ONC BREAST HISTOLOGY
VA-ONC BREAST FOLLOWUP
VA-ONC BREAST TARGET
VA-ONC BREAST HORMONE
VA-ONC BREAST SURGERY
VA-ONC BREAST RT
VA-ONC BREAST CHEMO
VA-ONC BREAST ECOG
VA-ONC BREAST PATHOLOGY
VA-ONC BREAST STAGE
VA-ONC BREAST DX DATE

Colorectal Cancer:

VA-Oncology Colorectal Components

TIU TEMPLATE FIELD

WORD PROC 50X2
00 EDIT BOX 24
ONC FUTURE VISITS
ONC LIFESTYLE
TEXT (1-60 CHAR)1
ONCOLOGY TRTMENT SYMPTOM
ONCOLOGY SYMPTOM DURING
WORD PROCESSING SHORT
00 EDIT BOX 12
ONCOLOGY YES NO
ONCOLOGY CHEMO ROUTE
TEXT (1-20 CHAR)
ALLCOMMENT(4LINES)
GEN TEXT BOX 50
ONC MDC CLICK HERE TO INCLUDE

HEALTH FACTORS

Oncology (ONC) Colorectal (CRC) Workup
ONC CRC Most Recent Colonoscopy Date-
ONC CRC Precision Oncology
ONC CRC Other Lab Test
ONC CRC HER2 FISH
ONC CRC HER2 IHC
ONC CRC CDX2 Negative
ONC CRC CDX2 Positive
ONC CRC MSI Low
ONC CRC MSI High
ONC CRC BRAF Mutant Type
ONC CRC BRAF Wild Type
ONC CRC KRAS Mutant Type
ONC CRC NRAS Wild Type
ONC CRC KRAS Wild Type
ONC CRC NRAS Mutant Type
ONC CRC CEA Test
ONC CRC Primary Site-
ONC CRC Primary Site-Rectum
ONC CRC Primary Site-Colon
Oncology (ONC) Colorectal (CRC) FollowUp
ONC CRC Complications From Treatment
ONC CRC-Response Not Determined
ONC CRC-Recurrence of Disease
ONC CRC-No Recurrence of Disease
ONC CRC Response-Progression
ONC CRC-Stable Disease
ONC CRC-Partial Response
ONC CRC-Complete Response
Oncology (ONC) Colorectal (CRC) Treatmnt
ONC CRC Clinical Trial Stop Date-
ONC CRC Clinical Trial Start Date-

ONC CRC Clinical Trial
ONC CRC Radiation Stopped-
ONC CRC RT Stopped-Pt Request
ONC CRC RT Stopped-Disease Progression
ONC CRC RT Stopped-Toxicity
ONC CRC Radiation Therapy Plan Complete
ONC CRC Radiation Stop Date-
ONC CRC Radiation Start Date-
ONC CRC Radiation Site-
ONC CRC Radiation Chest Stop Date-
ONC CRC Radiation Chest Start Date-
ONC CRC Radiation Liver Stop Date-
ONC CRC Radiation Liver Start Date-
ONC CRC Radiation Rectum Stop Date-
ONC CRC Radiation Rectum Start Date-
ONC CRC Radiation Colon Stop Date-
ONC CRC Radiation Colon Start Date-
ONC CRC No Radiation Therapy
ONC CRC Pt Declined Radiation Therapy
ONC CRC Radiation Not Recommended
ONC CRC Surgery-
ONC CRC Surgery-Diverting Ostomy
ONC CRC Abdominal Perineal Resection
ONC CRC Surgery-Low Anterior Resection
ONC CRC Surgery-Subtotal Colectomy
ONC CRC Surgery-Sigmoidectomy
ONC CRC Surgery-Transverse Colectomy
ONC CRC Surgery-Left Hemicolectomy
ONC CRC Surgery-Right Hemicolectomy
ONC CRC Surgery-Ileocectomy
ONC CRC Surgery-Colectomy
ONC CRC Surgery-Not Recommended
ONC CRC Pt Declined Surgery
ONC CRC Chemotherapy Plan Completed
ONC CRC Chemo Stopped Other-
ONC CRC Chemo Stopped-Pt Request
ONC CRC Chemo Stopped-Progression
ONC CRC Chemotherapy Stopped-Toxicity
ONC CRC Chemo Stop Date-
ONC CRC Chemo Start Date-
ONC CRC Chemotherapy
ONC CRC Trifluridine/Tipiracil Start-
ONC CRC Chemo Regorafenib Stop Date-
ONC CRC Chemo Regorafenib Start Date-
ONC CRC Chemo Ziv-aflibercept Stop-
ONC CRC Chemo Ziv-aflibercept Start-
ONC CRC Chemo Ramucirumab Stop Date-
ONC CRC Chemo Ramucirumab Start Date-
ONC CRC Chemo Panitumumab Stop Date-
ONC CRC Chemo Panitumumab Start Date-
ONC CRC Chemo Oxaliplatin Stop Date-
ONC CRC Chemo Cetuximab Start Date-
ONC CRC Chemo Capecitabine Stop Date-
ONC CRC Chemo Capecitabine Start Date-
ONC CRC Chemo Bevacizumab Stop Date-

ONC CRC Chemo Bevacizumab Start Date-
ONC CRC Chemo Leucovorin Stop Date-
ONC CRC Chemo Leucovorin Start Date-
ONC CRC Chemo Oxaliplatin Start Date-
ONC CRC Chemo 5-Fluorouracil Stop Date-
ONC CRC Chemo 5-Fluorouracil Start Date-
ONC CRC Trifluridine/Tipiracil Stop-
ONC CRC Chemo Cetuximab Stop Date-
ONC CRC Chemo Not Recommended
ONC CRC Chemotherapy Not Admin
ONC CRC ECOG PS-Unknown
ONC CRC ECOG PS-5
ONC CRC ECOG PS-4
ONC CRC ECOG PS-3
ONC CRC ECOG PS-2
ONC CRC ECOG PS-1
ONC CRC ECOG PS-0
ONC CRC No. of Lymph Nodes Examined
ONC CRC No. of Lymph Nodes W/Cancer
ONC CRC Histology
ONC CRC Histology Adenocarcinoma
ONC CRC Path Regional Lymph Nodes-N2b
ONC CRC Path Regional Lymph Nodes-N2a
ONC CRC Path Regional Lymph Nodes-N1c
ONC CRC Path Regional Lymph Nodes-N1b
ONC CRC Path Regional Lymph Nodes-N1a
ONC CRC Path Regional Lymph Nodes-N0
ONC CRC Path Regional Lymph Nodes-NX
ONC CRC Path Distant Metastasis-M1b
ONC CRC Path Distant Metastasis-M1a
ONC CRC Path Distant Metastasis-M0
ONC CRC Path Distant Metastasis-MX
ONC CRC Pathological Primary Tumor-T4b
ONC CRC Pathological Primary Tumor-T4a
ONC CRC Pathological Primary Tumor-T3
ONC CRC Pathological Primary Tumor-T2
ONC CRC Pathological Primary Tumor-T1
ONC CRC Pathological Primary Tumor-Tis
ONC CRC Pathological Primary Tumor-T0
ONC CRC Pathological Primary Tumor-TX
ONC CRC Pathological TNM Stage Date-
ONC CRC Clin Regional Lymph Nodes-N2b
ONC CRC Clin Regional Lymph Nodes-N2a
ONC CRC Clin Regional Lymph Nodes-N1b
ONC CRC Clin Regional Lymph Nodes-N1a
ONC CRC Clinical Regional Lymph Nodes-N0
ONC CRC Clinical Regional Lymph Nodes-NX
ONC CRC Clin Distant Metastasis-M1b
ONC CRC Clin Distant Metastasis-M1a
ONC CRC Clinical Distant Metastasis-M0
ONC CRC Clinical Distant Metastasis-MX
ONC CRC Clinical Primary Tumor-T4b
ONC CRC Clinical Primary Tumor-T4a
ONC CRC Clinical Primary Tumor-T3
ONC CRC Clinical Primary Tumor-T2

ONC CRC Clinical Primary Tumor-T1
ONC CRC Clinical Primary Tumor-Tis
ONC CRC Clinical Primary Tumor-T0
ONC CRC Clinical Primary Tumor-TX
ONC CRC Clinical TNM Stage Date-
ONC CRC Pathological Summary Stage-IIIc
ONC CRC Path Summary Stage-Unknown
ONC CRC Pathological Summary Stage-IVb
ONC CRC Pathological Summary Stage-IVa
ONC CRC Pathological Summary Stage-IIIb
ONC CRC Pathological Summary Stage-IIIa
ONC CRC Pathological Summary Stage-IIc
ONC CRC Pathological Summary Stage-IIb
ONC CRC Pathological Summary Stage-IIa
ONC CRC Pathological Summary Stage-I
ONC CRC Pathological Summary Stage-0
ONC CRC Path Summary Stage Date-
ONC CRC Clinical Summary Stage-IIIc
ONC CRC Clinical Summary Stage-Unknown
ONC CRC Clinical Summary Stage-IVb
ONC CRC Clinical Summary Stage-IVa
ONC CRC Clinical Summary Stage-IIIb
ONC CRC Clinical Summary Stage-IIIa
ONC CRC Clinical Summary Stage-IIc
ONC CRC Clinical Summary Stage-IIb
ONC CRC Clinical Summary Stage-IIa
ONC CRC Clinical Summary Stage-I
ONC CRC Clinical Summary Stage-0
ONC CRC Clinical Summary Stage Date-
ONC CRC Clin Regional Lymph Nodes-N1c
ONC CRC Date of Diagnosis
ONC CRC Chemotherapy Pt Declined
ONC CRC Consent for Chemo Not Obtained
ONC CRC Consent for Chemo Obtained
ONC CRC Surgery Not Performed Other-
ONC CRC Treatment Discussed w/Pt-Unknown
ONC CRC Intent Treatment Not Discussed
ONC CRC Intent of Treatment Discussed
ONC CRC Treatment-Palliative
ONC CRC Treatment-Curative
ONC CRC Treatment-Not Determined
ONC CRC Tissue Sample Sent to POP
ONC CRC Tissue Sample Sent
ONC CRC Case Presented to Tumor Board
ONC CRC Palliative Referral
ONC CRC Hospice Referral
ONC CRC Referral
ONC CRC Referral Service Unavailable
ONC CRC Referral Not Appropriate
ONC CRC Pt Declined Referral
ONC CRC No Tumor Board Available
ONC CRC Case Not Presented Tumor Board

REMINDER SPONSOR
VHA ONCOLOGY

REMINDER COMPUTED FINDINGS

VA-BSA

REMINDER TERM

VA-ONC CRC CLINICAL RT
VA-ONC CRC ECOG RT
VA-ONC CRC RADIATION RT
VA-ONC CRC SURGERY RT
VA-ONC CRC TREATMENT TYPE RT
VA-ONC CRC PATHOLOGY RT
VA-ONC CRC STAGING RT
VA-ONC CRC PRIMARY SITE RT
VA-ONC CRC DATE OF DX RT
VA-ONC CRC COLONOSCOPY RT
VA-ONC CRC LAB TEST RT
VA-ONC CRC REFERRAL RT
VA-ONC CRC RESPONSE RT
VA-ONC CRC CHEMO RT
VA-ONC CRC TUMOR BOARD RT
VA-ONC CRC TITLE RT

REMINDER DEFINITION

VA-BODY SURFACE AREA

REMINDER DIALOG

VA-ONCOLOGY TREATMENT SUMMARY COLORECTAL
VA-ONCOLOGY TREATMENT PLAN COLORECTAL
VA-ONCOLOGY MDC COLORECTAL
VA-ONCOLOGY COLORECTAL

HEALTH SUMMARY COMPONENT

CLINICAL REMINDERS FINDINGS
PCE HEALTH FACTORS SELECTED
LAB CYTOPATHOLOGY
LAB SURGICAL PATHOLOGY
SURGERY REPORTS BRIEF
IMAGING IMPRESSION

HEALTH SUMMARY TYPE

VA-ONC BSA HSO
VA-ONC CRC COLONOSCOPY
VA-ONC CRC LABS
VA-ONC CRC PRIMARY SITE
VA-ONC CRC FOLLOWUP
VA-ONC CRC CLINICAL TRIAL
VA-ONC CRC RADIATION THERAPY
VA-ONC CRC SURGERY
VA-ONC CRC CHEMOTHERAPY
VA-ONC CRC ECOG
VA-ONC CRC HISTOLOGY
VA-ONC CRC STAGING
VA-ONC CRC DATE OF DX
VA-ONC CRC HEADER 1
VA-ONC CRC TREATMENT INTENT

VA-ONC MDC PATH
VA-ONC MDC SURGERY
VA-ONC MDC RADIOLOGY
VA-ONC CRC REFERRAL
VA-ONC CRC TUMOR BOARD
VA-ONC CRC HEADER 3
VA-ONC CRC HEADER 2

HEALTH SUMMARY OBJECTS

VA-ONC BSA HSO
VA-ONC CRC COLONOSCOPY
VA-ONC CRC LABS
VA-ONC CRC PRIMARY SITE
VA-ONC CRC FOLLOWUP
VA-ONC CRC CLINICAL TRIAL
VA-ONC CRC RADIATION THERAPY
VA-ONC CRC SURGERY
VA-ONC CRC CHEMOTHERAPY
VA-ONC CRC ECOG
VA-ONC CRC HISTOLOGY
VA-ONC CRC STAGING
VA-ONC CRC DATE OF DX
VA-ONC CRC HEADER 1
VA-ONC CRC TREATMENT INTENT
VA-ONC MDC THORACIC PATH
VA-ONC MDC THORACIC SURGERY
VA-ONC MDC THORACIC RADIOLOGY
VA-ONC CRC REFERRAL
VA-ONC CRC TUMOR BOARD
VA-ONC CRC HEADER 3
VA-ONC CRC HEADER 2

TIU DOCUMENT DEFINITION

VA-ONC BSA HSO
PATIENT HEIGHT
PATIENT WEIGHT
PATIENT DATE OF BIRTH
PATIENT NAME
VA-ONC CRC COLONOSCOPY
VA-ONC CRC LABS
VA-ONC CRC PRIMARY SITE
VA-ONC CRC FOLLOWUP
VA-ONC CRC CLINICAL TRIAL
VA-ONC CRC RADIATION THERAPY
VA-ONC CRC SURGERY
VA-ONC CRC CHEMOTHERAPY
VA-ONC CRC ECOG
VA-ONC CRC HISTOLOGY
VA-ONC CRC STAGING
VA-ONC CRC DATE OF DX
VA-ONC CRC HEADER 1
VA-ONC CRC TREATMENT INTENT
VA-ONC MDC PATH
VA-ONC MDC SURGERY
VA-ONC MDC RADIOLOGY

VA-ONC CRC REFERRAL
VA-ONC CRC TUMOR BOARD
VA-ONC CRC HEADER 3
VA-ONC CRC HEADER 2

VA-ONC CRC CLINICAL TRIAL
VA-ONC CRC RADIATION THERAPY
VA-ONC CRC SURGERY
VA-ONC CRC CHEMOTHERAPY
VA-ONC CRC ECOG
VA-ONC CRC HISTOLOGY
VA-ONC CRC STAGING
VA-ONC CRC DATE OF DX
VA-ONC CRC HEADER 1
VA-ONC CRC TREATMENT INTENT
VA-ONC MDC PATH
VA-ONC MDC SURGERY
VA-ONC MDC RADIOLOGY
VA-ONC CRC REFERRAL
VA-ONC CRC TUMOR BOARD
VA-ONC CRC HEADER 3
VA-ONC CRC HEADER 2

VA-Oncology Colorectal MDC

COLORECTAL MDC

Components:

TIU TEMPLATE FIELD

GEN TEXT BOX 50
ALLCOMMENT(4LINES)
ONC MDC CLICK HERE TO INCLUDE
00 EDIT BOX 24

HEALTH FACTORS

Oncology (ONC) Colorectal (CRC) Workup
ONC CRC Tissue Sample Sent to POP
ONC CRC Tissue Sample Sent
ONC CRC Most Recent Colonoscopy Date-
ONC CRC Other Lab Test
ONC CRC HER2 FISH
ONC CRC HER2 IHC
ONC CRC CDX2 Negative
ONC CRC CDX2 Positive
ONC CRC MSI Low
ONC CRC MSI High
ONC CRC BRAF Mutant Type
ONC CRC BRAF Wild Type
ONC CRC KRAS Mutant Type
ONC CRC NRAS Wild Type
ONC CRC KRAS Wild Type
ONC CRC NRAS Mutant Type
ONC CRC CEA Test
ONC CRC No. of Lymph Nodes Examined

ONC CRC No. of Lymph Nodes W/Cancer
ONC CRC Histology
ONC CRC Histology Adenocarcinoma
ONC CRC Primary Site-
ONC CRC Primary Site-Rectum
ONC CRC Primary Site-Colon
ONC CRC Clinical Summary Stage-IIIc
ONC CRC Clinical Summary Stage-Unknown
ONC CRC Clinical Summary Stage-IVb
ONC CRC Clinical Summary Stage-IVa
ONC CRC Clinical Summary Stage-IIIb
ONC CRC Clinical Summary Stage-IIIa
ONC CRC Clinical Summary Stage-IIc
ONC CRC Clinical Summary Stage-IIb
ONC CRC Clinical Summary Stage-I
ONC CRC Clinical Summary Stage-0
ONC CRC Clinical Summary Stage Date-
ONC CRC Pathological Summary Stage-IIIc
ONC CRC Path Summary Stage-Unknown
ONC CRC Pathological Summary Stage-IVb
ONC CRC Pathological Summary Stage-IVa
ONC CRC Pathological Summary Stage-IIIb
ONC CRC Pathological Summary Stage-IIIa
ONC CRC Pathological Summary Stage-IIc
ONC CRC Pathological Summary Stage-IIb
ONC CRC Pathological Summary Stage-IIa
ONC CRC Pathological Summary Stage-I
ONC CRC Pathological Summary Stage-0
ONC CRC Path Summary Stage Date-
ONC CRC Path Regional Lymph Nodes-N2b
ONC CRC Path Regional Lymph Nodes-N2a
ONC CRC Path Regional Lymph Nodes-N1c
ONC CRC Path Regional Lymph Nodes-N1b
ONC CRC Path Regional Lymph Nodes-N1a
ONC CRC Path Regional Lymph Nodes-N0
ONC CRC Path Regional Lymph Nodes-NX
ONC CRC Path Distant Metastasis-M1b
ONC CRC Path Distant Metastasis-M1a
ONC CRC Path Distant Metastasis-M0
ONC CRC Path Distant Metastasis-MX
ONC CRC Clinical Primary Tumor-T4b
ONC CRC Clinical Primary Tumor-T4a
ONC CRC Clinical Primary Tumor-T3
ONC CRC Clinical Primary Tumor-T2
ONC CRC Clinical Primary Tumor-T1
ONC CRC Clinical Primary Tumor-Tis
ONC CRC Clinical Primary Tumor-T0
ONC CRC Clinical Primary Tumor-TX
ONC CRC Clinical TNM Stage Date-
ONC CRC Pathological Primary Tumor-T4b
ONC CRC Pathological Primary Tumor-T4a
ONC CRC Pathological Primary Tumor-T3
ONC CRC Pathological Primary Tumor-T2
ONC CRC Pathological Primary Tumor-T1
ONC CRC Pathological Primary Tumor-Tis

ONC CRC Pathological Primary Tumor-T0
ONC CRC Pathological Primary Tumor-TX
ONC CRC Pathological TNM Stage Date-
ONC CRC Clinical Summary Stage-IIa
ONC CRC Clin Distant Metastasis-M1b
ONC CRC Clin Distant Metastasis-M1a
ONC CRC Clinical Distant Metastasis-M0
ONC CRC Clinical Distant Metastasis-MX
ONC CRC Clin Regional Lymph Nodes-N2b
ONC CRC Clin Regional Lymph Nodes-N2a
ONC CRC Clin Regional Lymph Nodes-N1c
ONC CRC Clin Regional Lymph Nodes-N1b
ONC CRC Clin Regional Lymph Nodes-N1a
ONC CRC Clinical Regional Lymph Nodes-N0
ONC CRC Clinical Regional Lymph Nodes-NX
ONC CRC Date of Diagnosis
ONC CRC ECOG PS-Unknown
ONC CRC ECOG PS-5
ONC CRC ECOG PS-4
ONC CRC ECOG PS-3
ONC CRC ECOG PS-2
ONC CRC ECOG PS-1
ONC CRC ECOG PS-0
Oncology (ONC) Colorectal (CRC) Treatmnt
ONC CRC Case Presented to Tumor Board

REMINDER SPONSOR

VHA ONCOLOGY

REMINDER TERM

VA-ONC CRC COLONOSCOPY RT
VA-ONC CRC LAB TEST RT
VA-ONC CRC PATHOLOGY RT
VA-ONC CRC PRIMARY SITE RT
VA-ONC CRC STAGING RT
VA-ONC CRC DATE OF DX RT
VA-ONC CRC ECOG RT

REMINDER DIALOG

VA-ONCOLOGY MDC COLORECTAL

HEALTH SUMMARY COMPONENT

LAB CYTOPATHOLOGY
LAB SURGICAL PATHOLOGY
SURGERY REPORTS BRIEF
IMAGING IMPRESSION
PCE HEALTH FACTORS SELECTED

HEALTH SUMMARY TYPE

VA-ONC MDC PATH
VA-ONC MDC SURGERY
VA-ONC MDC RADIOLOGY
VA-ONC CRC COLONOSCOPY
VA-ONC CRC LABS
VA-ONC CRC HISTOLOGY

VA-ONC CRC PRIMARY SITE
VA-ONC CRC STAGING
VA-ONC CRC DATE OF DX
VA-ONC CRC ECOG

HEALTH SUMMARY OBJECTS

VA-ONC MDC THORACIC PATH
VA-ONC MDC THORACIC SURGERY
VA-ONC MDC THORACIC RADIOLOGY
VA-ONC CRC COLONOSCOPY
VA-ONC CRC LABS
VA-ONC CRC HISTOLOGY
VA-ONC CRC PRIMARY SITE
VA-ONC CRC STAGING
VA-ONC CRC DATE OF DX
VA-ONC CRC ECOG

TIU DOCUMENT DEFINITION

VA-ONC MDC PATH
VA-ONC MDC SURGERY
VA-ONC MDC RADIOLOGY
VA-ONC CRC COLONOSCOPY
VA-ONC CRC LABS
VA-ONC CRC HISTOLOGY
VA-ONC CRC PRIMARY SITE
VA-ONC CRC STAGING
VA-ONC CRC DATE OF DX
VA-ONC CRC ECOG

VA-Oncology Colorectal Treatment Plan

VA-ONCOLOGY TREATMENT PLAN COLORECTAL COMPONENTS:

REMINDER DIALOG

VA-ONCOLOGY TREATMENT PLAN COLORECTAL

TIU TEMPLATE FIELD

00 EDIT BOX 24
WORD PROCESSING SHORT
ONCOLOGY SYMPTOM DURING
00 EDIT BOX 12
ONCOLOGY YES NO
ONCOLOGY CHEMO ROUTE
TEXT (1-20 CHAR)

HEALTH FACTORS

Oncology (ONC) Colorectal (CRC) Treatmnt
ONC CRC Chemotherapy Not Admin
ONC CRC Chemotherapy Pt Declined
ONC CRC Chemo Not Recommended
ONC CRC Consent for Chemo Not Obtained
ONC CRC Consent for Chemo Obtained
ONC CRC Radiation Stopped-
ONC CRC RT Stopped-Pt Request

ONC CRC RT Stopped-Disease Progression
ONC CRC RT Stopped-Toxicity
ONC CRC Radiation Therapy Plan Complete
ONC CRC Radiation Stop Date-
ONC CRC Radiation Start Date-
ONC CRC Radiation Chest Stop Date-
ONC CRC Radiation Chest Start Date-
ONC CRC Radiation Liver Stop Date-
ONC CRC Radiation Liver Start Date-
ONC CRC Radiation Rectum Stop Date-
ONC CRC Radiation Rectum Start Date-
ONC CRC Radiation Colon Stop Date-
ONC CRC Radiation Colon Start Date-
ONC CRC No Radiation Therapy
ONC CRC Pt Declined Radiation Therapy
ONC CRC Radiation Not Recommended
ONC CRC Radiation Site-
ONC CRC Surgery-
ONC CRC Surgery-Diverting Ostomy
ONC CRC Abdominal Perineal Resection
ONC CRC Surgery-Low Anterior Resection
ONC CRC Surgery-Subtotal Colectomy
ONC CRC Surgery-Sigmoidectomy
ONC CRC Surgery-Transverse Colectomy
ONC CRC Surgery-Left Hemicolectomy
ONC CRC Surgery-Right Hemicolectomy
ONC CRC Surgery-Ileocecectomy
ONC CRC Surgery-Colectomy
ONC CRC Surgery-Not Recommended
ONC CRC Pt Declined Surgery
ONC CRC Treatment Discussed w/Pt-Unknown
ONC CRC Intent Treatment Not Discussed
ONC CRC Intent of Treatment Discussed
ONC CRC Treatment-Palliative
ONC CRC Treatment-Curative
ONC CRC Treatment-Not Determined
Oncology (ONC) Colorectal (CRC) Workup
ONC CRC No. of Lymph Nodes Examined
ONC CRC No. of Lymph Nodes W/Cancer
ONC CRC Histology
ONC CRC Histology Adenocarcinoma
ONC CRC Clinical Summary Stage-IIIc
ONC CRC Clinical Summary Stage-Unknown
ONC CRC Clinical Summary Stage-IVb
ONC CRC Clinical Summary Stage-IVa
ONC CRC Clinical Summary Stage-IIIb
ONC CRC Clinical Summary Stage-IIIa
ONC CRC Clinical Summary Stage-IIc
ONC CRC Clinical Summary Stage-IIb
ONC CRC Clinical Summary Stage-I
ONC CRC Clinical Summary Stage-0
ONC CRC Clinical Summary Stage Date-
ONC CRC Pathological Summary Stage-IIIc
ONC CRC Path Summary Stage-Unknown
ONC CRC Pathological Summary Stage-IVb

ONC CRC Pathological Summary Stage-IVa
ONC CRC Pathological Summary Stage-IIIb
ONC CRC Pathological Summary Stage-IIIa
ONC CRC Pathological Summary Stage-IIc
ONC CRC Pathological Summary Stage-IIb
ONC CRC Pathological Summary Stage-IIa
ONC CRC Pathological Summary Stage-I
ONC CRC Pathological Summary Stage-0
ONC CRC Path Summary Stage Date-
ONC CRC Path Regional Lymph Nodes-N2b
ONC CRC Path Regional Lymph Nodes-N2a
ONC CRC Path Regional Lymph Nodes-N1c
ONC CRC Path Regional Lymph Nodes-N1b
ONC CRC Path Regional Lymph Nodes-N1a
ONC CRC Path Regional Lymph Nodes-N0
ONC CRC Path Regional Lymph Nodes-NX
ONC CRC Path Distant Metastasis-M1b
ONC CRC Path Distant Metastasis-M1a
ONC CRC Path Distant Metastasis-M0
ONC CRC Path Distant Metastasis-MX
ONC CRC Clinical Primary Tumor-T4b
ONC CRC Clinical Primary Tumor-T4a
ONC CRC Clinical Primary Tumor-T3
ONC CRC Clinical Primary Tumor-T2
ONC CRC Clinical Primary Tumor-T1
ONC CRC Clinical Primary Tumor-Tis
ONC CRC Clinical Primary Tumor-T0
ONC CRC Clinical Primary Tumor-TX
ONC CRC Clinical TNM Stage Date-
ONC CRC Pathological Primary Tumor-T4b
ONC CRC Pathological Primary Tumor-T4a
ONC CRC Pathological Primary Tumor-T3
ONC CRC Pathological Primary Tumor-T2
ONC CRC Pathological Primary Tumor-T1
ONC CRC Pathological Primary Tumor-Tis
ONC CRC Pathological Primary Tumor-T0
ONC CRC Pathological Primary Tumor-TX
ONC CRC Pathological TNM Stage Date-
ONC CRC Clinical Summary Stage-IIa
ONC CRC Clin Distant Metastasis-M1b
ONC CRC Clin Distant Metastasis-M1a
ONC CRC Clinical Distant Metastasis-M0
ONC CRC Clinical Distant Metastasis-MX
ONC CRC Clin Regional Lymph Nodes-N2b
ONC CRC Clin Regional Lymph Nodes-N2a
ONC CRC Clin Regional Lymph Nodes-N1c
ONC CRC Clin Regional Lymph Nodes-N1b
ONC CRC Clin Regional Lymph Nodes-N1a
ONC CRC Clinical Regional Lymph Nodes-N0
ONC CRC Clinical Regional Lymph Nodes-NX
ONC CRC Primary Site-
ONC CRC Primary Site-Rectum
ONC CRC Primary Site-Colon
ONC CRC Date of Diagnosis

REMINDER SPONSOR

VHA ONCOLOGY

REMINDER TERM

VA-ONC CRC RADIATION RT
VA-ONC CRC SURGERY RT
VA-ONC CRC TREATMENT TYPE RT
VA-ONC CRC PATHOLOGY RT
VA-ONC CRC STAGING RT
VA-ONC CRC PRIMARY SITE RT

HEALTH SUMMARY COMPONENT

PCE HEALTH FACTORS SELECTED

HEALTH SUMMARY TYPE

VA-ONC CRC RADIATION THERAPY
VA-ONC CRC SURGERY
VA-ONC CRC TREATMENT INTENT
VA-ONC CRC HISTOLOGY
VA-ONC CRC STAGING
VA-ONC CRC PRIMARY SITE
VA-ONC CRC DATE OF DX

HEALTH SUMMARY OBJECTS

VA-ONC CRC RADIATION THERAPY
VA-ONC CRC SURGERY
VA-ONC CRC TREATMENT INTENT
VA-ONC CRC HISTOLOGY
VA-ONC CRC STAGING
VA-ONC CRC PRIMARY SITE
VA-ONC CRC DATE OF DX

TIU DOCUMENT DEFINITION

VA-ONC CRC RADIATION THERAPY
VA-ONC CRC SURGERY
VA-ONC CRC TREATMENT INTENT
VA-ONC CRC HISTOLOGY
VA-ONC CRC STAGING
VA-ONC CRC PRIMARY SITE
VA-ONC CRC DATE OF DX
PATIENT HEIGHT
PATIENT WEIGHT
PATIENT DATE OF BIRTH
PATIENT NAME

VA-Oncology Colorectal Treatment Summary

VA-ONCOLOGY TREATMENT SUMMARY COLORECTAL

Components:

REMINDER SPONSOR

VHA ONCOLOGY

REMINDER DIALOG

VA-ONCOLOGY TREATMENT SUMMARY COLORECTAL

TIU TEMPLATE FIELD

00 EDIT BOX 24
ONC FUTURE VISITS
TEXT (1-60 CHAR)1
ONCOLOGY TRTMENT SYMPTOM

HEALTH FACTORS

Oncology (ONC) Colorectal (CRC) FollowUp
ONC CRC Future Plan Other
ONC CRC Future Plan Observation
ONC CRC Future Plan Surgery
ONC CRC Future Plan Radiation Therapy
ONC CRC Future Plan Chemotherapy
Oncology (ONC) Colorectal (CRC) Workup
ONC CRC Most Recent Colonoscopy Date-
ONC CRC Other Lab Test
ONC CRC HER2 FISH
ONC CRC HER2 IHC
ONC CRC CDX2 Negative
ONC CRC CDX2 Positive
ONC CRC MSI Low
ONC CRC MSI High
ONC CRC BRAF Mutant Type
ONC CRC BRAF Wild Type
ONC CRC KRAS Mutant Type
ONC CRC NRAS Wild Type
ONC CRC KRAS Wild Type
ONC CRC NRAS Mutant Type
ONC CRC CEA Test
ONC CRC Primary Site-
ONC CRC Primary Site-Rectum
ONC CRC Primary Site-Colon
ONC CRC Complications From Treatment
ONC CRC-Response Not Determined
ONC CRC-Recurrence of Disease
ONC CRC-No Recurrence of Disease
ONC CRC Response-Progression
ONC CRC-Stable Disease
ONC CRC-Partial Response
ONC CRC-Complete Response
Oncology (ONC) Breast Treatments
ONC Breast RT Dose/Fraction
ONC Breast RT Total Dose
ONC Breast RT Stop Date
ONC Breast RT Start Date
ONC Breast RT Site:
ONC Breast RT Partial Dose/Fraction
ONC Breast RT Partial Breast Total Dose
ONC Breast RT Partial Breast Stop Date
ONC Breast RT Partial Breast Start Date
ONC Breast RT Intact Dose/Fraction
ONC Breast RT Intact Breast Total Dose
ONC Breast RT Intact Breast Stop Date
ONC Breast RT Intact Breast Start Date

ONC Breast RT Lymph Node Dose/Fraction
 ONC Breast RT Lymph Node Total Dose
 ONC Breast RT Lymph Node Stop Date
 ONC Breast RT Lymph Node Start Date
 ONC Breast RT Chest Wall Dose/Fraction
 ONC Breast RT Chest Wall Total Dose
 ONC Breast RT Chest Wall Stop Date
 ONC Breast RT Chest Wall Start Date
 ONC Breast RT Stopped-Patient Request
 ONC Breast RT Stopped-Progression
 ONC Breast RT Stopped-Other
 ONC Breast RT Stopped-Toxicity
 ONC Breast RT Stopped-Plan Completed
 Oncology (ONC) Colorectal (CRC) Treatmnt
 ONC CRC Radiation Stop Date-
 ONC CRC Radiation Start Date-
 ONC CRC Radiation Chest Stop Date-
 ONC CRC Radiation Chest Start Date-
 ONC CRC Radiation Liver Stop Date-
 ONC CRC Radiation Liver Start Date-
 ONC CRC Radiation Rectum Stop Date-
 ONC CRC Radiation Rectum Start Date-
 ONC CRC Radiation Colon Stop Date-
 ONC CRC Radiation Colon Start Date-
 ONC CRC No Radiation Therapy
 ONC CRC Pt Declined Radiation Therapy
 ONC CRC Radiation Not Recommended
 ONC CRC Surgery-
 ONC CRC Surgery-Diverting Ostomy
 ONC CRC Abdominal Perineal Resection
 ONC CRC Surgery-Low Anterior Resection
 ONC CRC Surgery-Subtotal Colectomy
 ONC CRC Surgery-Sigmoidectomy
 ONC CRC Surgery-Transverse Colectomy
 ONC CRC Surgery-Left Hemicolectomy
 ONC CRC Surgery-Right Hemicolectomy
 ONC CRC Surgery-Ileocecectomy
 ONC CRC Surgery-Colectomy
 ONC CRC Surgery-Not Recommended
 ONC CRC Pt Declined Surgery
 ONC CRC Chemotherapy Plan Completed
 ONC CRC Chemo Stopped Other-
 ONC CRC Chemo Stopped-Pt Request
 ONC CRC Chemo Stopped-Progression
 ONC CRC Chemotherapy Stopped-Toxicity
 ONC CRC Chemo Stop Date-
 ONC CRC Chemo Start Date-
 ONC CRC Trifluridine/Tipiracil Start-
 ONC CRC Chemo Regorafenib Stop Date-
 ONC CRC Chemo Regorafenib Start Date-
 ONC CRC Chemo Ziv-aflibercept Stop-
 ONC CRC Chemo Ziv-aflibercept Start-
 ONC CRC Chemo Ramucirumab Stop Date-
 ONC CRC Chemo Ramucirumab Start Date-
 ONC CRC Chemo Panitumumab Stop Date-

ONC CRC Chemo Panitumumab Start Date-
ONC CRC Chemo Oxaliplatin Stop Date-
ONC CRC Chemo Cetuximab Start Date-
ONC CRC Chemo Capecitabine Stop Date-
ONC CRC Chemo Capecitabine Start Date-
ONC CRC Chemo Bevacizumab Stop Date-
ONC CRC Chemo Bevacizumab Start Date-
ONC CRC Chemo Leucovorin Stop Date-
ONC CRC Chemo Leucovorin Start Date-
ONC CRC Chemo Oxaliplatin Start Date-
ONC CRC Chemo 5-Fluorouracil Stop Date-
ONC CRC Chemo 5-Fluorouracil Start Date-
ONC CRC Chemotherapy
ONC CRC Trifluridine/Tipiracil Stop-
ONC CRC Chemo Cetuximab Stop Date-
ONC CRC Chemo Not Recommended
ONC CRC Chemotherapy Not Admin
ONC CRC ECOG PS-Unknown
ONC CRC ECOG PS-5
ONC CRC ECOG PS-4
ONC CRC ECOG PS-3
ONC CRC ECOG PS-2
ONC CRC ECOG PS-1
ONC CRC ECOG PS-0
ONC CRC No. of Lymph Nodes Examined
ONC CRC No. of Lymph Nodes W/Cancer
ONC CRC Histology
ONC CRC Histology Adenocarcinoma
ONC CRC Clinical Summary Stage-IIIc
ONC CRC Clinical Summary Stage-Unknown
ONC CRC Clinical Summary Stage-IVb
ONC CRC Clinical Summary Stage-IVa
ONC CRC Clinical Summary Stage-IIIb
ONC CRC Clinical Summary Stage-IIIa
ONC CRC Clinical Summary Stage-IIc
ONC CRC Clinical Summary Stage-IIb
ONC CRC Clinical Summary Stage-I
ONC CRC Clinical Summary Stage-0
ONC CRC Clinical Summary Stage Date-
ONC CRC Pathological Summary Stage-IIIc
ONC CRC Path Summary Stage-Unknown
ONC CRC Pathological Summary Stage-IVb
ONC CRC Pathological Summary Stage-IVa
ONC CRC Pathological Summary Stage-IIIb
ONC CRC Pathological Summary Stage-IIIa
ONC CRC Pathological Summary Stage-IIc
ONC CRC Pathological Summary Stage-IIb
ONC CRC Pathological Summary Stage-IIa
ONC CRC Pathological Summary Stage-I
ONC CRC Pathological Summary Stage-0
ONC CRC Path Summary Stage Date-
ONC CRC Path Regional Lymph Nodes-N2b
ONC CRC Path Regional Lymph Nodes-N2a
ONC CRC Path Regional Lymph Nodes-N1c
ONC CRC Path Regional Lymph Nodes-N1b

ONC CRC Path Regional Lymph Nodes-N1a
ONC CRC Path Regional Lymph Nodes-N0
ONC CRC Path Regional Lymph Nodes-NX
ONC CRC Path Distant Metastasis-M1b
ONC CRC Path Distant Metastasis-M1a
ONC CRC Path Distant Metastasis-M0
ONC CRC Path Distant Metastasis-MX
ONC CRC Clinical Primary Tumor-T4b
ONC CRC Clinical Primary Tumor-T4a
ONC CRC Clinical Primary Tumor-T3
ONC CRC Clinical Primary Tumor-T2
ONC CRC Clinical Primary Tumor-T1
ONC CRC Clinical Primary Tumor-Tis
ONC CRC Clinical Primary Tumor-T0
ONC CRC Clinical Primary Tumor-TX
ONC CRC Clinical TNM Stage Date-
ONC CRC Pathological Primary Tumor-T4b
ONC CRC Pathological Primary Tumor-T4a
ONC CRC Pathological Primary Tumor-T3
ONC CRC Pathological Primary Tumor-T2
ONC CRC Pathological Primary Tumor-T1
ONC CRC Pathological Primary Tumor-Tis
ONC CRC Pathological Primary Tumor-T0
ONC CRC Pathological Primary Tumor-TX
ONC CRC Pathological TNM Stage Date-
ONC CRC Clinical Summary Stage-IIa
ONC CRC Clin Distant Metastasis-M1b
ONC CRC Clin Distant Metastasis-M1a
ONC CRC Clinical Distant Metastasis-M0
ONC CRC Clinical Distant Metastasis-MX
ONC CRC Clin Regional Lymph Nodes-N2b
ONC CRC Clin Regional Lymph Nodes-N2a
ONC CRC Clin Regional Lymph Nodes-N1c
ONC CRC Clin Regional Lymph Nodes-N1b
ONC CRC Clin Regional Lymph Nodes-N1a
ONC CRC Clinical Regional Lymph Nodes-N0
ONC CRC Clinical Regional Lymph Nodes-NX
ONC CRC Date of Diagnosis

HEALTH SUMMARY COMPONENT
PCE HEALTH FACTORS SELECTED

HEALTH SUMMARY TYPE
VA-ONC CRC COLONOSCOPY
VA-ONC CRC LABS
VA-ONC CRC PRIMARY SITE
VA-ONC CRC FOLLOWUP
VA-ONC CRC RADIATION THERAPY
VA-ONC CRC SURGERY
VA-ONC CRC CHEMOTHERAPY
VA-ONC CRC ECOG
VA-ONC CRC HISTOLOGY
VA-ONC CRC STAGING
VA-ONC CRC DATE OF DX

HEALTH SUMMARY OBJECTS
VA-ONC CRC COLONOSCOPY
VA-ONC CRC LABS
VA-ONC CRC PRIMARY SITE
VA-ONC CRC FOLLOWUP
VA-ONC CRC RADIATION THERAPY
VA-ONC CRC SURGERY
VA-ONC CRC CHEMOTHERAPY
VA-ONC CRC ECOG
VA-ONC CRC HISTOLOGY
VA-ONC CRC STAGING
VA-ONC CRC DATE OF DX

TIU DOCUMENT DEFINITION
VA-ONC CRC COLONOSCOPY
VA-ONC CRC LABS
VA-ONC CRC PRIMARY SITE
VA-ONC CRC FOLLOWUP
VA-ONC CRC RADIATION THERAPY
VA-ONC CRC SURGERY
VA-ONC CRC CHEMOTHERAPY
VA-ONC CRC ECOG
VA-ONC CRC HISTOLOGY
VA-ONC CRC STAGING
VA-ONC CRC DATE OF DX

Click on the embedded document to see contents of exchange file.

Lung Cancer:

VA-Oncology Lung (update)

VA-ONCOLOGY LUNG
Components:

REMINDER DIALOG
VA-ONCOLOGY LUNG

REMINDER SPONSOR

VHA ONCOLOGY
Office of Patient Care Services

TIU TEMPLATE FIELD

WORD PROCESSING SHORT

HEALTH FACTORS

Oncology (ONC) Lung Cancer Treatments
ONC Lung Clinical Trial Stop Date
ONC Lung Clinical Trial Start Date
ONC Lung Clinical Trial
ONC Lung Palliative Referral
ONC Lung Hospice Referral
ONC Lung Referral-Yes
ONC Lung Referral-Other
ONC Lung Referral-Service Not Available
ONC Lung Referral-Not Appropriate
ONC Lung Referral-Patient Declined
ONC Lung PCU Referral-No
Oncology (ONC) Lung Cancer Follow-Up
ONC Lung Follow Up-Not Determined
ONC Lung Follow Up-Progression
ONC Lung Follow Up-No Recurrence
ONC Lung Follow Up-Recurrence
ONC Lung Follow Up-Stable Disease
ONC Lung Follow Up-Partial Respons
ONC Lung Follow Up-Complete Response
ONC Lung Chemo Stopped-Other
ONC Lung Chemo Stopped-Patient Request
ONC Lung Chemo Stopped-Progression
ONC Lung Chemo Stopped-Toxicity
ONC Lung Chemo Stopped-Plan Completed
ONC Lung Chemo Other Stop Date
ONC Lung Chemo Other Start Date
ONC Lung Ramucirumab Stop Date
ONC Lung Ramucirumab Start Date
ONC Lung Pembrolizumab Stop Date
ONC Lung Pembrolizumab Start Date
ONC Lung Nivolumab Stop Date
ONC Lung Nivolumab Start Date
ONC Lung Alectinib Stop Date
ONC Lung Alectinib Start Date
ONC Lung Necitumumab Stop Date
ONC Lung Necitumumab Start Date
ONC Lung Osimertinib Stop Date
ONC Lung Osimertinib Start Date
ONC Lung Gefitinib Stop Date
ONC Lung Gefitinib Start Date
ONC Lung Afatinib Stop Date
ONC Lung Afatinib Start Date
ONC Lung Bevacizumab Stop Date
ONC Lung Bevacizumab Start Date
ONC Lung Ceritinib Stop Date

ONC Lung Ceritinib Start Date
ONC Lung Crizotinib Stop Date
ONC Lung Crizotinib Start Date
ONC Lung Erlotinib Stop Date
ONC Lung Erlotinib Start Date
ONC Lung Topotecan Stop Date
ONC Lung Topotecan Start Date
ONC Lung Irinotecan Stop Date
ONC Lung Irinotecan Start Date
ONC Lung Etoposide Stop Date
ONC Lung Etoposide Start Date
ONC Lung Vinorelbine Stop Date
ONC Lung Vinorelbine Start Date
ONC Lung Gemitabine Stop Date
ONC Lung Gemitabine Start Date
ONC Lung Pemetrexed Stop Date
ONC Lung Pemetrexed Start Date
ONC Lung Paclitaxel Stop Date
ONC Lung Paclitaxel Start Date
ONC Lung Docetaxel Stop Date
ONC Lung Docetaxel Start Date
ONC Lung Carboplatin Stop Date
ONC Lung Carboplatin Start Date
ONC Lung Cisplatin Stop Date
ONC Lung Cisplatin Start Date
ONC Lung Chemo Intent-Not Determined
ONC Lung Chemo Intent-Palliative
ONC Lung Chemo Intent-Single Modality
ONC Lung Chemo Intent-Concurrent
ONC Lung Chemo Intent-Neoadjuvant
ONC Lung Chemo Intent-Adjuvant
ONC Lung Chemo Not Admin-Other
ONC Lung Chemo Not Admin-Pt Declined
ONC Lung Chemo Not Admin-Not Recommended
ONC Lung RT Stopped-Other
ONC Lung RT Stopped-Patient Request
ONC Lung RT Stopped-Progression
ONC Lung RT Stopped-Toxicity
ONC Lung RT Stopped-Plan Completed
ONC Lung Stereotactic Body RT-Unknown
ONC Lung Stereotactic Body RT-No
ONC Lung Stereotactic Body RT-Yes
ONC Lung Other RT Stop Date
ONC Lung Other RT Start Date
ONC Lung Bone RT Stop Date
ONC Lung Bone RT Start Date
ONC Lung Brain RT Stop Date
ONC Lung Brain RT Start Date
ONC Lung Chest RT Stop Date
ONC Lung Chest RT Start Date
ONC Lung RT Intent-Not Determined
ONC Lung RT Intent-Palliative
ONC Lung RT Intent-Single Modality
ONC Lung RT Type-Concurrent
ONC Lung RT Type-Neoadjuvant

ONC Lung RT Type-Adjuvant
ONC Lung RT Not Admin-Other
ONC Lung RT Not Admin-Pt Declined
ONC Lung RT Not Admin-Contraindicated
ONC Lung Surgery Outcome-Not Determined
ONC Lung Surgery Outcome-Result Pending
ONC Lung Surgery Outcome-Not Resectable
ONC Lung Surgery Outcome-+ Margins
ONC Lung Surgery Outcome-Clear Margins
ONC Lung Surgery Type-Wedge Resection
ONC Lung Surgery Type-Segmentectomy
ONC Lung Surgery Type-Pneumonectomy
ONC Lung Surgery Type-Lobectomy
ONC Lung Surgery No-Other Reason
ONC Lung Surgery No-Patient Declined
ONC Lung Surgery-Not Recommended
Oncology (ONC) Lung Cancer Diagnoses
ONC Lung Molecular Test-Other
ONC Lung ALK Translocation-Rearranged
ONC Lung ALK Translocation-Normal
ONC Lung ALK Translocation-Result Pending
ONC Lung ALK Translocation-Not Done
ONC Lung EGFR Test-Mutant
ONC Lung EGFR Test-Wild Type
ONC Lung EGFR Test-Results Pending
ONC Lung EGFR Test-Not Done
ONC Lung Histology-Other
ONC Lung Histology-SCLC
ONC Lung Histology-NSCLC, NOS
ONC Lung Histology-Large Cell
ONC Lung Histology-Squamous Cell
ONC Lung Histology-Adenocarcinoma
ONC Lung Path Distant Metastasis-M1b
ONC Lung Path Distant Metastasis-M1a
ONC Lung Path Distant Metastasis-M1
ONC Lung Path Distant Metastasis-M0
ONC Lung Path Distant Metastasis-Mx
ONC Lung Path Regional Lymph Nodes-N3
ONC Lung Path Regional Lymph Nodes-N2
ONC Lung Path Regional Lymph Nodes-N1
ONC Lung Path Regional Lymph Nodes-N0
ONC Lung Path Regional Lymph Nodes-Nx
ONC Lung Pathological Primary Tumor-T4
ONC Lung Pathological Primary Tumor-T3
ONC Lung Pathological Primary Tumor-T2b
ONC Lung Pathological Primary Tumor-T2a
ONC Lung Pathological Primary Tumor-T1b
ONC Lung Pathological Primary Tumor-T1a
ONC Lung Pathological Primary Tumor-Tx
ONC Lung Pathological TNM Stage Date-
ONC Lung Pathological-Summary Stage Unk
ONC Lung Pathological-Summary Stage Ext
ONC Lung Pathological-Summary Stage Lim
ONC Lung Pathological-Summary Stage I
ONC Lung Pathological-Summary Stage IV

ONC Lung Pathological-Summary Stage IIIB
ONC Lung Pathological-Summary Stage IIIA
ONC Lung Pathological-Summary Stage III
ONC Lung Pathological-Summary Stage IIB
ONC Lung Pathological-Summary Stage IIA
ONC Lung Pathological-Summary Stage II
ONC Lung Pathological-Summary Stage IB
ONC Lung Pathological-Summary Stage IA
ONC Lung Pathological-Summary Stage 0
ONC Lung Clin Distant Metastasis-M1b
ONC Lung Clin Distant Metastasis-M1a
ONC Lung Clin Distant Metastasis-M1
ONC Lung Clin Distant Metastasis-M0
ONC Lung Clin Distant Metastasis-Mx
ONC Lung Clin Regional Lymph Nodes-N3
ONC Lung Clin Regional Lymph Nodes-N2
ONC Lung Clin Regional Lymph Nodes-N1
ONC Lung Clin Regional Lymph Nodes-N0
ONC Lung Clin Regional Lymph Nodes-Nx
ONC Lung Clinical Primary Tumor-T4
ONC Lung Clinical Primary Tumor-T3
ONC Lung Clinical Primary Tumor-T2b
ONC Lung Clinical Primary Tumor-T2a
ONC Lung Clinical Primary Tumor-T1b
ONC Lung Clinical Primary Tumor-T1a
ONC Lung Clinical Primary Tumor-Tx
ONC Lung Clinical TNM Stage Date-
ONC Lung Clinical-Summary Stage Unknown
ONC Lung Clinical-Summary Stage Extens
ONC Lung Clinical-Summary Stage Limited
ONC Lung Clinical-Summary Stage IV
ONC Lung Clinical-Summary Stage IIIB
ONC Lung Clinical-Summary Stage IIIA
ONC Lung Clinical-Summary Stage III
ONC Lung Clinical-Summary Stage IIB
ONC Lung Clinical-Summary Stage IIA
ONC Lung Clinical-Summary Stage II
ONC Lung Clinical-Summary Stage IB
ONC Lung Clinical-Summary Stage IA
ONC Lung Clinical-Summary Stage I
ONC Lung Clinical-Summary Stage 0
ONC Lung Initial Diagnosis Date-
ONC Lung First Abnormal Radiology Date-
ONC Lung ECOG-0
ONC Lung ECOG-1
ONC Lung ECOG-2
ONC Lung ECOG-3
ONC Lung ECOG-4
ONC Lung ECOG-5
ONC Lung ECOG-Unknown
ONC Lung Presented To Tumor Board-Yes
ONC Lung Presented To Tumor Board-No
ONC Lung Presented To Tumor Board-N/A
ONC Lung LN Sampling-Ultrasound
ONC Lung LN Sampling-Mediastinoscopy

ONC Lung LN Sampling-Surgery
ONC Lung LN Sampling Done-No
ONC Lung Chemo Intent Discussed-Yes
ONC Lung Chemo Intent Discussed-No
ONC Lung Doublet No-Contraindicated
ONC Lung Doublet No-Declined
ONC Lung Doublet No-N/A
ONC Lung Doublet No-Other
ONC Lung Bevacizumab Not Admin-Contra
ONC Lung Bevacizumab Not Admin-Declined
ONC Lung Bevacizumab Not Admin-N/A
ONC Lung Bevacizumab Not Admin-Other
ONC Lung RT Intent-Curative
ONC Lung RT Intent Discussed-Yes
ONC Lung RT Intent Discussed-No
ONC Lung RT Site-Other
ONC Lung RT Site-Bone
ONC Lung RT Site-Brain
ONC Lung RT Site-Chest
ONC Lung RT Stopped-Site Change
ONC Lung RT Intent Discussed-Unknown
ONC Lung Chemo Type-Other
ONC Lung Chemo Type-Bevacizumab
ONC Lung Chemo Type-Ceritinib
ONC Lung Chemo Type-Crizotinib
ONC Lung Chemo Type-Vinorelbine
ONC Lung Chemo Type-Erlotinib
ONC Lung Chemo Type-Irinotecan
ONC Lung Chemo Type-Etoposide
ONC Lung Chemo Type-Gemcitabine
ONC Lung Chemo Type-Pemetrexed
ONC Lung Chemo Type-Paclitaxel
ONC Lung Chemo Type-Docetaxel
ONC Lung Chemo Type-Carboplatin
ONC Lung Chemo Type-Cisplatin
ONC Lung Chemo Intent Discussed-Unknown

REMINDER TERM

VA-ONC LUNG CLINICAL TRIAL RT
VA-ONC LUNG REFERRAL RT
VA-ONC LUNG HEADER BRANCH RT
VA-ONC LUNG RADIATION THERAPY RT
VA-ONC LUNG MOLECULAR TESTING RT
VA-ONC LUNG DATE OF DIAGNOSIS RT
VA-ONC LUNG CHEMO RT
VA-ONC LUNG MEDIASTINOSCOPY RT
VA-ONC LUNG SURGERY PERFORMED RT
VA-ONC LUNG FIRST ABNORMAL RADIOLOGY RT
VA-ONC LUNG TUMOR BOARD RT
VA-ONC LUNG PERFORMANCE STATUS RT
VA-ONC LUNG HISTOLOGY RT
VA-ONC LUNG CLINICAL STAGE RT
VA-ONC LUNG FOLLOW UP RT

HEALTH SUMMARY COMPONENT

PCE HEALTH FACTORS SELECTED

HEALTH SUMMARY TYPE

VA-ONC LUNG CLINICAL TRIAL
VA-ONC LUNG HOSPICE REFERRAL
VA-ONC LUNG HEADER 3
VA-ONC LUNG HEADER 2
VA-ONC LUNG HEADER
VA-ONC LUNG RADIATION THERAPY
VA-ONC LUNG MOLECULAR TESTS
VA-ONC LUNG DIAGNOSIS DATE
VA-ONC LUNG CHEMOTHERAPY
VA-ONC LUNG MEDIASTINOSCOPY
VA-ONC LUNG SURGERY PERFORMED
VA-ONC LUNG ABNORMAL RADIOLOGY
VA-ONC LUNG TUMOR BOARD
VA-ONC LUNG ECOG PS
VA-ONC LUNG HISTOLOGY
VA-ONC LUNG STAGING
VA-ONC LUNG FOLLOW UP

HEALTH SUMMARY OBJECTS

VA-ONC LUNG CLINICAL TRIAL
VA-ONC LUNG HOSPICE REFERRAL
VA-ONC LUNG HEADER 3
VA-ONC LUNG HEADER 2
VA-ONC LUNG HEADER
VA-ONC LUNG RADIATION THERAPY
VA-ONC LUNG MOLECULAR TESTS
VA-ONC LUNG DIAGNOSIS DATE
VA-ONC LUNG CHEMOTHERAPY
VA-ONC LUNG MEDIASTINOSCOPY
VA-ONC LUNG SURGERY PERFORMED
VA-ONC LUNG ABNORMAL RADIOLOGY
VA-ONC LUNG TUMOR BOARD
VA-ONC LUNG ECOG PS
VA-ONC LUNG HISTOLOGY
VA-ONC LUNG STAGING
VA-ONC LUNG FOLLOW UP

TIU DOCUMENT DEFINITION

VA-ONC LUNG CLINICAL TRIAL
VA-ONC LUNG HOSPICE REFERRAL
VA-ONC LUNG HEADER 3
VA-ONC LUNG HEADER 2
VA-ONC LUNG HEADER
VA-ONC LUNG RADIATION THERAPY
VA-ONC LUNG MOLECULAR TEST
VA-ONC LUNG DIAGNOSIS DATES
VA-ONC LUNG CHEMOTHERAPY
VA-ONC LUNG MEDIASTINOSCOPY
VA-ONC LUNG SURGERY PERFORMED/OUTCOME
VA-ONC LUNG FIRST ABNORMAL RADIOLOGY
VA-ONC LUNG TUMOR BOARD
VA-ONC LUNG ECOG PS

VA-ONC LUNG HISTOLOGY
VA-ONC LUNG STAGING
VA-ONC LUNG FOLLOW UP

VA-Oncology Thoracic MDC

VA-ONCOLOGY MDC LUNG

Components:

REMINDER DIALOG

VA-ONCOLOGY MDC THORACIC

REMINDER SPONSOR

VHA ONCOLOGY

TIU TEMPLATE FIELD

GEN TEXT BOX 50

WORD PROCESSING SHORT

ALLCOMMENT(4LINES)

ONC MDC CLICK HERE TO INCLUDE

00 EDIT BOX 24

HEALTH FACTORS

Oncology (ONC) Lung Cancer Diagnoses

ONC Lung Tissue Sample Sent to POP

ONC Lung Tissue Sample Sent

ONC Lung ECOG-Unknown

ONC Lung ECOG-5

ONC Lung ECOG-4

ONC Lung ECOG-3

ONC Lung ECOG-2

ONC Lung ECOG-1

ONC Lung ECOG-0

ONC Lung Molecular Test-Other

ONC Lung ALK Translocation-Rearranged

ONC Lung ALK Translocation-Normal

ONC Lung ALK Translocation-Result PENDING

ONC Lung ALK Translocation-Not Done

ONC Lung EGFR Test-Mutant

ONC Lung EGFR Test-Wild Type

ONC Lung EGFR Test-Results Pending

ONC Lung EGFR Test-Not Done

ONC Lung Histology-Other

ONC Lung Histology-SCLC

ONC Lung Histology-NSCLC, NOS

ONC Lung Histology-Large Cell

ONC Lung Histology-Squamous Cell

ONC Lung Histology-Adenocarcinoma

ONC Lung Path Distant Metastasis-M1b

ONC Lung Path Distant Metastasis-M1a

ONC Lung Path Distant Metastasis-M1

ONC Lung Path Distant Metastasis-M0

ONC Lung Path Distant Metastasis-Mx

ONC Lung Path Regional Lymph Nodes-N3

ONC Lung Path Regional Lymph Nodes-N2
ONC Lung Path Regional Lymph Nodes-N1
ONC Lung Path Regional Lymph Nodes-N0
ONC Lung Path Regional Lymph Nodes-Nx
ONC Lung Pathological Primary Tumor-T4
ONC Lung Pathological Primary Tumor-T3
ONC Lung Pathological Primary Tumor-T2b
ONC Lung Pathological Primary Tumor-T2a
ONC Lung Pathological Primary Tumor-T1b
ONC Lung Pathological Primary Tumor-T1a
ONC Lung Pathological Primary Tumor-Tx
ONC Lung Pathological TNM Stage Date-
ONC Lung Pathological-Summary Stage Ext
ONC Lung Pathological-Summary Stage Lim
ONC Lung Pathological-Summary Stage Unk
ONC Lung Pathological-Summary Stage IV
ONC Lung Pathological-Summary Stage IIIB
ONC Lung Pathological-Summary Stage IIIA
ONC Lung Pathological-Summary Stage III
ONC Lung Pathological-Summary Stage IIB
ONC Lung Pathological-Summary Stage IIA
ONC Lung Pathological-Summary Stage II
ONC Lung Pathological-Summary Stage IB
ONC Lung Pathological-Summary Stage IA
ONC Lung Pathological-Summary Stage I
ONC Lung Pathological-Summary Stage 0
ONC Lung Clin Distant Metastasis-M1b
ONC Lung Clin Distant Metastasis-M1a
ONC Lung Clin Distant Metastasis-M1
ONC Lung Clin Distant Metastasis-M0
ONC Lung Clin Distant Metastasis-Mx
ONC Lung Clin Regional Lymph Nodes-N3
ONC Lung Clin Regional Lymph Nodes-N2
ONC Lung Clin Regional Lymph Nodes-N1
ONC Lung Clin Regional Lymph Nodes-N0
ONC Lung Clin Regional Lymph Nodes-Nx
ONC Lung Clinical Primary Tumor-T4
ONC Lung Clinical Primary Tumor-T3
ONC Lung Clinical Primary Tumor-T2b
ONC Lung Clinical Primary Tumor-T2a
ONC Lung Clinical Primary Tumor-T1b
ONC Lung Clinical Primary Tumor-T1a
ONC Lung Clinical Primary Tumor-Tx
ONC Lung Clinical TNM Stage Date-
ONC Lung Clinical-Summary Stage Extens
ONC Lung Clinical-Summary Stage Limited
ONC Lung Clinical-Summary Stage Unknown
ONC Lung Clinical-Summary Stage IV
ONC Lung Clinical-Summary Stage IIIB
ONC Lung Clinical-Summary Stage IIIA
ONC Lung Clinical-Summary Stage III
ONC Lung Clinical-Summary Stage IIB
ONC Lung Clinical-Summary Stage IIA
ONC Lung Clinical-Summary Stage II
ONC Lung Clinical-Summary Stage IB

ONC Lung Clinical-Summary Stage IA
ONC Lung Clinical-Summary Stage I
ONC Lung Clinical-Summary Stage 0
ONC Lung Initial Diagnosis Date-
ONC Lung First Abnormal Radiology Date-
Oncology (ONC) Lung Cancer Treatments
ONC Lung Presented To Tumor Board-Yes

REMINDER TERM

VA-ONC LUNG PERFORMANCE STATUS RT
VA-ONC LUNG MOLECULAR TESTING RT
VA-ONC LUNG HISTOLOGY RT
VA-ONC LUNG CLINICAL STAGE RT
VA-ONC LUNG DATE OF DIAGNOSIS RT
VA-ONC LUNG FIRST ABNORMAL RADIOLOGY

HEALTH SUMMARY COMPONENT

PCE HEALTH FACTORS SELECTED
LAB CYTOPATHOLOGY
LAB SURGICAL PATHOLOGY
SURGERY REPORTS BRIEF
IMAGING IMPRESSION

HEALTH SUMMARY TYPE

VA-ONC LUNG ECOG PS
VA-ONC MDC PATH
VA-ONC MDC SURGERY
VA-ONC MDC RADIOLOGY
VA-ONC LUNG MOLECULAR TESTS
VA-ONC LUNG HISTOLOGY
VA-ONC LUNG STAGING
VA-ONC LUNG DIAGNOSIS DATE
VA-ONC LUNG ABNORMAL RADIOLOGY

HEALTH SUMMARY OBJECTS

VA-ONC LUNG ECOG PS
VA-ONC MDC THORACIC PATH
VA-ONC MDC THORACIC SURGERY
VA-ONC MDC THORACIC RADIOLOGY
VA-ONC LUNG MOLECULAR TESTS
VA-ONC LUNG HISTOLOGY
VA-ONC LUNG STAGING
VA-ONC LUNG DIAGNOSIS DATE
VA-ONC LUNG ABNORMAL RADIOLOGY

TIU DOCUMENT DEFINITION

VA-ONC LUNG ECOG PS
VA-ONC MDC PATH
VA-ONC MDC SURGERY
VA-ONC MDC RADIOLOGY
VA-ONC LUNG MOLECULAR TEST
VA-ONC LUNG HISTOLOGY
VA-ONC LUNG STAGING
VA-ONC LUNG DIAGNOSIS DATES
VA-ONC LUNG FIRST ABNORMAL RADIOLOGY

VA-Oncology Lung Treatment Plan

VA-ONCOLOGY TREATMENT PLAN LUNG

Components:

REMINDER DIALOG

VA-ONCOLOGY TREATMENT PLAN LUNG

REMINDER SPONSOR

VHA ONCOLOGY

TIU TEMPLATE FIELD

00 EDIT BOX 24

00 EDIT BOX 12

TEXT (1-20 CHAR)

ONCOLOGY YES NO

ONCOLOGY CHEMO ROUTE

WORD PROCESSING SHORT

ONCOLOGY SYMPTOM DURIN

HEALTH FACTORS

Oncology (ONC) Lung Cancer Treatments

ONC Lung Chemo Not Admin-Other

ONC Lung Chemo Not Admin-Pt Declined

ONC Lung Chemo Not Admin-Not Recommended

Oncology (ONC) Colorectal (CRC) Treatmnt

ONC CRC Consent for Chemo Not Obtained

ONC CRC Consent for Chemo Obtained

ONC Lung Chemo Intent Discussed-Unknown

ONC Lung Chemo Intent Discussed-No

ONC Lung Chemo Intent Discussed-Yes

ONC Lung Chemo Intent-Single Modality

ONC Lung Chemo Intent-Concurrent

ONC Lung Chemo Intent-Neoadjuvant

ONC Lung Chemo Intent-Adjuvant

ONC Lung Chemo Intent-Not Determined

ONC Lung Chemo Intent-Palliative

ONC Lung Other RT Stop Date

ONC Lung Other RT Start Date

ONC Lung RT Site-Other

ONC Lung Bone RT Stop Date

ONC Lung Bone RT Start Date

ONC Lung RT Site-Bone

ONC Lung Brain RT Stop Date

ONC Lung Brain RT Start Date

ONC Lung RT Site-Brain

ONC Lung Chest RT Stop Date

ONC Lung Chest RT Start Date

ONC Lung RT Site-Chest

ONC Lung RT Intent-Not Determined

ONC Lung RT Intent-Single Modality

ONC Lung RT Type-Concurrent

ONC Lung RT Type-Neoadjuvant

ONC Lung RT Type-Adjuvant

ONC Lung RT Stopped-Other

ONC Lung RT Stopped-Site Change
ONC Lung RT Stopped-Patient Request
ONC Lung RT Stopped-Progression
ONC Lung RT Stopped-Toxicity
ONC Lung RT Stopped-Plan Completed
ONC Lung RT Not Admin-Other
ONC Lung RT Not Admin-Pt Declined
ONC Lung RT Not Admin-Contraindicated
ONC Lung Stereotactic Body RT-Unknown
ONC Lung Stereotactic Body RT-No
ONC Lung Stereotactic Body RT-Yes
ONC Lung RT Intent Discussed-Unknown
ONC Lung RT Intent Discussed-No
ONC Lung RT Intent Discussed-Yes
ONC Lung RT Intent-Curative
ONC Lung RT Intent-Palliative
ONC Lung Surgery Type-Wedge Resection
ONC Lung Surgery Type-Segmentectomy
ONC Lung Surgery Type-Pneumonectomy
ONC Lung Surgery Type-Lobectomy
ONC Lung Surgery Outcome-Not Determined
ONC Lung Surgery Outcome-Result Pending
ONC Lung Surgery Outcome-Not Resectable
ONC Lung Surgery Outcome-+ Margins
ONC Lung Surgery Outcome-Clear Margins
ONC Lung Surgery No-Other Reason
ONC Lung Surgery No-Patient Declined
ONC Lung Surgery-Not Recommended
Oncology (ONC) Lung Cancer Diagnoses
ONC Lung Histology-Other
ONC Lung Histology-SCLC
ONC Lung Histology-NSCLC, NOS
ONC Lung Histology-Large Cell
ONC Lung Histology-Squamous Cell
ONC Lung Histology-Adenocarcinoma
ONC Lung Path Distant Metastasis-M1b
ONC Lung Path Distant Metastasis-M1a
ONC Lung Path Distant Metastasis-M1
ONC Lung Path Distant Metastasis-M0
ONC Lung Path Distant Metastasis-Mx
ONC Lung Path Regional Lymph Nodes-N3
ONC Lung Path Regional Lymph Nodes-N2
ONC Lung Path Regional Lymph Nodes-N1
ONC Lung Path Regional Lymph Nodes-N0
ONC Lung Path Regional Lymph Nodes-Nx
ONC Lung Pathological Primary Tumor-T4
ONC Lung Pathological Primary Tumor-T3
ONC Lung Pathological Primary Tumor-T2b
ONC Lung Pathological Primary Tumor-T2a
ONC Lung Pathological Primary Tumor-T1b
ONC Lung Pathological Primary Tumor-T1a
ONC Lung Pathological Primary Tumor-Tx
ONC Lung Pathological TNM Stage Date-
ONC Lung Pathological-Summary Stage Ext
ONC Lung Pathological-Summary Stage Lim

ONC Lung Pathological-Summary Stage Unk
 ONC Lung Pathological-Summary Stage IV
 ONC Lung Pathological-Summary Stage IIIB
 ONC Lung Pathological-Summary Stage IIIA
 ONC Lung Pathological-Summary Stage III
 ONC Lung Pathological-Summary Stage IIB
 ONC Lung Pathological-Summary Stage IIA
 ONC Lung Pathological-Summary Stage II
 ONC Lung Pathological-Summary Stage IB
 ONC Lung Pathological-Summary Stage IA
 ONC Lung Pathological-Summary Stage I
 ONC Lung Pathological-Summary Stage 0
 ONC Lung Clin Distant Metastasis-M1b
 ONC Lung Clin Distant Metastasis-M1a
 ONC Lung Clin Distant Metastasis-M1
 ONC Lung Clin Distant Metastasis-M0
 ONC Lung Clin Distant Metastasis-Mx
 ONC Lung Clin Regional Lymph Nodes-N3
 ONC Lung Clin Regional Lymph Nodes-N2
 ONC Lung Clin Regional Lymph Nodes-N1
 ONC Lung Clin Regional Lymph Nodes-N0
 ONC Lung Clin Regional Lymph Nodes-Nx
 ONC Lung Clinical Primary Tumor-T4
 ONC Lung Clinical Primary Tumor-T3
 ONC Lung Clinical Primary Tumor-T2b
 ONC Lung Clinical Primary Tumor-T2a
 ONC Lung Clinical Primary Tumor-T1b
 ONC Lung Clinical Primary Tumor-T1a
 ONC Lung Clinical Primary Tumor-Tx
 ONC Lung Clinical TNM Stage Date-
 ONC Lung Clinical-Summary Stage Extens
 ONC Lung Clinical-Summary Stage Limited
 ONC Lung Clinical-Summary Stage Unknown
 ONC Lung Clinical-Summary Stage IV
 ONC Lung Clinical-Summary Stage IIIB
 ONC Lung Clinical-Summary Stage IIIA
 ONC Lung Clinical-Summary Stage III
 ONC Lung Clinical-Summary Stage IIB
 ONC Lung Clinical-Summary Stage IIA
 ONC Lung Clinical-Summary Stage II
 ONC Lung Clinical-Summary Stage IB
 ONC Lung Clinical-Summary Stage IA
 ONC Lung Clinical-Summary Stage I
 ONC Lung Clinical-Summary Stage 0
 ONC Lung Initial Diagnosis Date-

REMINDER TERM

VA-ONC LUNG RADIATION THERAPY RT
 VA-ONC LUNG SURGERY PERFORMED RT
 VA-ONC LUNG HISTOLOGY RT
 VA-ONC LUNG CLINICAL STAGE RT

HEALTH SUMMARY COMPONENT

PCE HEALTH FACTORS SELECTED

X

HEALTH SUMMARY TYPE

VA-ONC LUNG RADIATION THERAPY
VA-ONC LUNG SURGERY PERFORMED
VA-ONC LUNG HISTOLOGY
VA-ONC LUNG STAGING
VA-ONC LUNG DIAGNOSIS DATE

HEALTH SUMMARY OBJECTS

VA-ONC LUNG RADIATION THERAPY
VA-ONC LUNG SURGERY PERFORMED
VA-ONC LUNG HISTOLOGY
VA-ONC LUNG STAGING
VA-ONC LUNG DIAGNOSIS DATE

TIU DOCUMENT DEFINITION

VA-ONC LUNG RADIATION THERAPY
VA-ONC LUNG SURGERY PERFORMED/OUTCOME
VA-ONC LUNG HISTOLOGY
VA-ONC LUNG STAGING
VA-ONC LUNG DIAGNOSIS DATES
PATIENT HEIGHT
PATIENT WEIGHT
PATIENT DATE OF BIRTH
PATIENT NAME

VA-Oncology Lung Treatment Summary

VA-ONCOLOGY TREATMENT SUMMARY LUNG

Components:

REMINDER DIALOG

VA-ONCOLOGY TREATMENT SUMMARY LUNG

REMINDER SPONSOR

VHA ONCOLOGY
Office of Patient Care Services

TIU TEMPLATE FIELD

00 EDIT BOX 24
TEXT (1-60 CHAR)1
ONCOLOGY TRTMENT SYMPTOM
ONC FUTURE VISITS

HEALTH FACTORS

Oncology (ONC) Lung Cancer Follow-Up
ONC Lung Complications From Treatment
ONC Lung Follow Up-Not Determined
ONC Lung Follow Up-Progression
ONC Lung Follow Up-No Recurrence
ONC Lung Follow Up-Recurrence
ONC Lung Follow Up-Stable Disease
ONC Lung Follow Up-Partial Respons
ONC Lung Follow Up-Complete Response
Oncology (ONC) Lung Cancer Treatments
ONC Lung Surgery Outcome-Not Determined

ONC Lung Surgery Outcome-Result Pending
ONC Lung Surgery Outcome-Not Resectable
ONC Lung Surgery Outcome-+ Margins
ONC Lung Surgery Outcome-Clear Margins
ONC Lung Surgery Type-Wedge Resection
ONC Lung Surgery Type-Segmentectomy
ONC Lung Surgery Type-Pneumonectomy
ONC Lung Surgery Type-Lobectomy
ONC Lung Surgery No-Other Reason
ONC Lung Surgery No-Patient Declined
ONC Lung Surgery-Not Recommended
ONC Lung RT Stopped-Patient Request
ONC Lung RT Stopped-Progression
ONC Lung RT Stopped-Other
ONC Lung RT Stopped-Toxicity
ONC Lung RT Stopped-Plan Completed
ONC Lung Other RT Stop Date
ONC Lung Other RT Start Date
ONC Lung RT Site-Other
ONC Lung Bone RT Stop Date
ONC Lung Bone RT Start Date
ONC Lung RT Site-Bone
ONC Lung Brain RT Stop Date
ONC Lung Brain RT Start Date
ONC Lung RT Site-Brain
ONC Lung Chest RT Stop Date
ONC Lung Chest RT Start Date
ONC Lung RT Site-Chest
ONC Lung RT Intent-Not Determined
ONC Lung RT Intent-Single Modality
ONC Lung RT Type-Concurrent
ONC Lung RT Type-Neoadjuvant
ONC Lung RT Type-Adjuvant
ONC Lung RT Stopped-Site Change
ONC Lung Chemo Stopped-Plan Completed
ONC Lung Chemo Stopped-Other
ONC Lung Chemo Stopped-Patient Request
ONC Lung Chemo Stopped-Progression
ONC Lung Chemo Stopped-Toxicity
ONC Lung Topotecan Stop Date
ONC Lung Topotecan Start Date
ONC Lung Chemo Other Stop Date
ONC Lung Chemo Other Start Date
ONC Lung Chemo Type-Other
ONC Lung Ramucirumab Stop Date
ONC Lung Ramucirumab Start Date
ONC Lung Bevacizumab Stop Date
ONC Lung Bevacizumab Start Date
ONC Lung Chemo Type-Bevacizumab
ONC Lung Pembrolizumab Stop Date
ONC Lung Pembrolizumab Start Date
ONC Lung Nivolumab Stop Date
ONC Lung Nivolumab Start Date
ONC Lung Alectinib Stop Date
ONC Lung Alectinib Start Date

ONC Lung Ceritinib Stop Date
ONC Lung Ceritinib Start Date
ONC Lung Chemo Type-Ceritinib
ONC Lung Crizotinib Stop Date
ONC Lung Crizotinib Start Date
ONC Lung Chemo Type-Crizotinib
ONC Lung Necitumumab Stop Date
ONC Lung Necitumumab Start Date
ONC Lung Osimertinib Stop Date
ONC Lung Osimertinib Start Date
ONC Lung Gefitinib Stop Date
ONC Lung Gefitinib Start Date
ONC Lung Afatinib Stop Date
ONC Lung Afatinib Start Date
ONC Lung Vinorelbine Stop Date
ONC Lung Vinorelbine Start Date
ONC Lung Chemo Type-Vinorelbine
ONC Lung Erlotinib Stop Date
ONC Lung Erlotinib Start Date
ONC Lung Chemo Type-Erlotinib
ONC Lung Irinotecan Stop Date
ONC Lung Irinotecan Start Date
ONC Lung Chemo Type-Irinotecan
ONC Lung Etoposide Stop Date
ONC Lung Etoposide Start Date
ONC Lung Chemo Type-Etoposide
ONC Lung Gemitabine Stop Date
ONC Lung Gemitabine Start Date
ONC Lung Chemo Type-Gemcitabine
ONC Lung Pemetrexed Stop Date
ONC Lung Pemetrexed Start Date
ONC Lung Chemo Type-Pemetrexed
ONC Lung Paclitaxel Stop Date
ONC Lung Paclitaxel Start Date
ONC Lung Chemo Type-Paclitaxel
ONC Lung Docetaxel Stop Date
ONC Lung Docetaxel Start Date
ONC Lung Chemo Type-Docetaxel
ONC Lung Carboplatin Stop Date
ONC Lung Carboplatin Start Date
ONC Lung Chemo Type-Carboplatin
ONC Lung Cisplatin Stop Date
ONC Lung Cisplatin Start Date
ONC Lung Chemo Type-Cisplatin
ONC Lung Chemo Not Admin-Other
ONC Lung Chemo Not Admin-Pt Declined
ONC Lung Chemo Not Admin-Not Recommended
Oncology (ONC) Colorectal (CRC) FollowUp
ONC CRC Future Plan Other
ONC CRC Future Plan Observation
ONC CRC Future Plan Surgery
ONC CRC Future Plan Radiation Therapy
ONC CRC Future Plan Chemotherapy
Oncology (ONC) Lung Cancer Diagnoses
ONC Lung ECOG-Unknown

ONC Lung ECOG-5
ONC Lung ECOG-4
ONC Lung ECOG-3
ONC Lung ECOG-2
ONC Lung ECOG-1
ONC Lung ECOG-0
ONC Lung Histology-Other
ONC Lung Histology-SCLC
ONC Lung Histology-NSCLC, NOS
ONC Lung Histology-Large Cell
ONC Lung Histology-Squamous Cell
ONC Lung Histology-Adenocarcinoma
ONC Lung Path Distant Metastasis-M1b
ONC Lung Path Distant Metastasis-M1a
ONC Lung Path Distant Metastasis-M1
ONC Lung Path Distant Metastasis-M0
ONC Lung Path Distant Metastasis-Mx
ONC Lung Path Regional Lymph Nodes-N3
ONC Lung Path Regional Lymph Nodes-N2
ONC Lung Path Regional Lymph Nodes-N1
ONC Lung Path Regional Lymph Nodes-N0
ONC Lung Path Regional Lymph Nodes-Nx
ONC Lung Pathological Primary Tumor-T4
ONC Lung Pathological Primary Tumor-T3
ONC Lung Pathological Primary Tumor-T2b
ONC Lung Pathological Primary Tumor-T2a
ONC Lung Pathological Primary Tumor-T1b
ONC Lung Pathological Primary Tumor-T1a
ONC Lung Pathological Primary Tumor-Tx
ONC Lung Pathological TNM Stage Date-
ONC Lung Pathological-Summary Stage Ext
ONC Lung Pathological-Summary Stage Lim
ONC Lung Pathological-Summary Stage Unk
ONC Lung Pathological-Summary Stage IV
ONC Lung Pathological-Summary Stage IIIB
ONC Lung Pathological-Summary Stage IIIA
ONC Lung Pathological-Summary Stage III
ONC Lung Pathological-Summary Stage IIB
ONC Lung Pathological-Summary Stage IIA
ONC Lung Pathological-Summary Stage II
ONC Lung Pathological-Summary Stage IB
ONC Lung Pathological-Summary Stage IA
ONC Lung Pathological-Summary Stage I
ONC Lung Pathological-Summary Stage 0
ONC Lung Clin Distant Metastasis-M1b
ONC Lung Clin Distant Metastasis-M1a
ONC Lung Clin Distant Metastasis-M1
ONC Lung Clin Distant Metastasis-M0
ONC Lung Clin Distant Metastasis-Mx
ONC Lung Clin Regional Lymph Nodes-N3
ONC Lung Clin Regional Lymph Nodes-N2
ONC Lung Clin Regional Lymph Nodes-N1
ONC Lung Clin Regional Lymph Nodes-N0
ONC Lung Clin Regional Lymph Nodes-Nx
ONC Lung Clinical Primary Tumor-T4

ONC Lung Clinical Primary Tumor-T3
ONC Lung Clinical Primary Tumor-T2b
ONC Lung Clinical Primary Tumor-T2a
ONC Lung Clinical Primary Tumor-T1b
ONC Lung Clinical Primary Tumor-T1a
ONC Lung Clinical Primary Tumor-Tx
ONC Lung Clinical TNM Stage Date-
ONC Lung Clinical-Summary Stage Extens
ONC Lung Clinical-Summary Stage Limited
ONC Lung Clinical-Summary Stage Unknown
ONC Lung Clinical-Summary Stage IV
ONC Lung Clinical-Summary Stage IIIB
ONC Lung Clinical-Summary Stage IIIA
ONC Lung Clinical-Summary Stage III
ONC Lung Clinical-Summary Stage IIB
ONC Lung Clinical-Summary Stage IIA
ONC Lung Clinical-Summary Stage II
ONC Lung Clinical-Summary Stage IB
ONC Lung Clinical-Summary Stage IA
ONC Lung Clinical-Summary Stage I
ONC Lung Clinical-Summary Stage 0
ONC Lung Initial Diagnosis Date-

HEALTH SUMMARY COMPONENT

PCE HEALTH FACTORS SELECTED

HEALTH SUMMARY TYPE

VA-ONC LUNG FOLLOW UP
VA-ONC LUNG SURGERY PERFORMED
VA-ONC LUNG RADIATION THERAPY
VA-ONC LUNG CHEMOTHERAPY
VA-ONC LUNG ECOG PS
VA-ONC LUNG HISTOLOGY
VA-ONC LUNG STAGING
VA-ONC LUNG DIAGNOSIS DATE

HEALTH SUMMARY OBJECTS

VA-ONC LUNG FOLLOW UP
VA-ONC LUNG SURGERY PERFORMED
VA-ONC LUNG RADIATION THERAPY
VA-ONC LUNG CHEMOTHERAPY
VA-ONC LUNG ECOG PS
VA-ONC LUNG HISTOLOGY
VA-ONC LUNG STAGING
VA-ONC LUNG DIAGNOSIS DATE

TIU DOCUMENT DEFINITION

VA-ONC LUNG FOLLOW UP
VA-ONC LUNG SURGERY PERFORMED/OUTCOME
VA-ONC LUNG RADIATION THERAPY
VA-ONC LUNG CHEMOTHERAPY
VA-ONC LUNG ECOG PS
VA-ONC LUNG HISTOLOGY
VA-ONC LUNG STAGING

Prostate Cancer:

VA-Oncology Prostate (update)

VA-ONCOLOGY PROSTATE

Components:

REMINDER DIALOG

VA-ONCOLOGY PROSTATE

X

REMINDER SPONSOR

VHA ONCOLOGY

Office of Patient Care Services

TIU TEMPLATE FIELD

WORD PROCESSING SHORT

VA ONCOLOGY LAST PSA

HEALTH FACTORS

Prostate Cancer (ONC PCA) Treatments

ONC PCA Clinical Trial Stop Date-

ONC PCA Clinical Trial Start Date-

ONC PCA Clinical Trial

Prostate Cancer (ONC PCA) Follow-Up

ONC PCA Follow Up-Not Determined

ONC PCA Follow Up-Progression of Disease

ONC PCA Follow Up-No Recurrence

ONC PCA Follow Up-Recurrence of Disease

ONC PCA Follow Up-Stable Disease

ONC PCA Follow Up-Partial Response

ONC PCA Follow Up-Complete Response

ONC PCA Cryotherapy Stop Date-

ONC PCA Cryotherapy Start Date-

ONC PCA Cryotherapy Not Admin-

ONC PCA Cryotherapy-Pt Declined

ONC PCA Cryotherapy-Not Recommended

ONC PCA Radiopharm Stopped Plan Complete

ONC PCA Radiopharm Stopped

ONC PCA Radiopharm Stopped Pt Request

ONC PCA Radiopharm Stopped Progression

ONC PCA Radiopharm Stopped Toxic

ONC PCA Radium 223 Stop Date-

ONC PCA Radium 223 Start Date-

ONC PCA Radiopharmaceuticals Start Date-

ONC PCA Radiopharm Other

ONC PCA Radiopharm Not Admin-

ONC PCA Radiopharm-Pt Declined

ONC PCA Radiopharm-Not Recommended

ONC PCA Radiopharmaceuticals Stop Date-

ONC Immunotherapy Stopped Plan Complete

ONC Immunotherapy Stopped

ONC Immunotherapy Stopped Pt Request

ONC Immunotherapy Stopped Progression
ONC Immunotherapy Stopped Toxic
ONC PCA Immunotherapy Other Stop Date-
ONC PCA Immunotherapy Other Start Date-
ONC PCA Immunotherapy-
ONC PCA Sipuleucel-T Stop Date-
ONC PCA Sipuleucel-T Start Date-
ONC PCA Immunotherapy Not Admin-
ONC PCA Immunotherapy-Pt Declined
ONC PCA Immunotherapy-Not Recommended
ONC PCA Biphosphonate Plan Complete
ONC PCA Biphosphonate Stopped
ONC PCA Biphosphonate Stopped Pt Request
ONC PCA Chemo Stopped Progression
ONC PCA Biphosphonate Stopped Toxic
ONC PCA Denosumab Stop Date-
ONC PCA Denosumab Start Date-
ONC PCA Biphosphonate Other Stop Date-
ONC PCA Biphosphonate Other Start Date-
ONC PCA Biphosphonate Other-
ONC PCA Pamidronate Stop Date-
ONC PCA Pamidronate Start Date-
ONC PCA Zoledronic Acid Stop Date-
ONC PCA Zoledronic Acid Start Date-
ONC PCA Biphosphonate Not Admin-
ONC PCA Biphosphonate-Pt Declined
ONC PCA Biphosphonate-Not Recommended
ONC PCA Steroid Stopped Plan Complete
ONC PCA Steroid Stopped
ONC PCA Steroid Stopped Pt Request
ONC PCA Steroid Stopped Progression
ONC PCA Steroid Stopped Toxic
ONC PCA Steroids Other Stop Date-
ONC PCA Steroids Other Start Date-
ONC PCA Steroids Other-
ONC PCA Dexamethasone Stop Date-
ONC PCA Dexamethasone Start Date-
ONC PCA Prednisone Stop Date-
ONC PCA Prednisone Start Date-
ONC PCA Steroids Not Administered-
ONC PCA Steroids-Pt Declined
ONC PCA Steroids-Not Recommended
ONC PCA Chemo Other Stop Date-
ONC PCA Chemo Other Start Date-
ONC PCA Chemo Type-
ONC PCA Estramustine Start Date-
ONC PCA Estramustine Stop Date-
ONC PCA Mitoxantrone Stop Date-
ONC PCA Mitoxantrone Start Date-
ONC PCA Cabazitaxel Stop Date-
ONC PCA Cabazitaxel Start Date-
ONC PCA Docetaxel Stop Date-
ONC PCA Docetaxel Start Date-
ONC PCA Chemo Stopped Plan Complete
ONC PCA Chemo Stopped

ONC PCA Chemo Stopped Pt Request
ONC PCA Chemo Stopped Toxicity
ONC PCA Chemo Not Administered-
ONC PCA Chemo No-Pt Declined
ONC PCA Chemo-Not Recommended
ONC PCA Chemo-No
ONC PCA Hormone Stopped Plan Complete
ONC PCA Hormone Therapy Stopped
ONC PCA Hormone Stopped Pt Request
ONC PCA Hormone Stopped Progression
ONC PCA Hormone Stopped Toxic
ONC PCA Other Therapy Stop Date-
ONC PCA Other Therapy Start Date-
ONC PCA Hormone Therapy Other Type-
ONC PCA Estrogen Stop Date-
ONC PCA Estrogen Start Date-
ONC PCA Androgen Synthesis Stop Date-
ONC PCA Androgen Synthesis Start Date-
ONC PCA Androgen Synthesis-Other
ONC PCA Ketoconazole Stop Date-
ONC PCA Ketoconazole Start Date-
ONC PCA Abiraterone Stop Date-
ONC PCA Abiraterone Start Date-
ONC PCA Anti-Androgen Other Stop Date-
ONC PCA Anti-Androgen Other Start Date-
ONC PCA Anti Androgen-Other
ONC PCA Megestrol Stop Date-
ONC PCA Megestrol Start Date-
ONC PCA Nilutamide Stop Date-
ONC PCA Nilutamide Start Date-
ONC PCA Flutamide Stop Date-
ONC PCA Flutamide Start Date-
ONC PCA Enzalutamide Stop Date-
ONC PCA Enzalutamide Start Date-
ONC PCA Bicalutamide Stop Date-
ONC PCA Bicalutamide Start Date-
ONC PCA GnRH Other Stop Date-
ONC PCA GnRH Other Start Date-
ONC PCA GnRH-Other
ONC PCA Triptorelin Stop Date-
ONC PCA Triptorelin Start Date-
ONC PCA Buserlin Stop Date-
ONC PCA Buserlin Start Date-
ONC PCA Goserelin Stop Date-
ONC PCA Goserelin Start Date-
ONC PCA Leuprolide Stop Date-
ONC PCA Leuprolide Start Date-
ONC PCA Hormone Therapy No-Other
ONC PCA Hormone Therapy-Pt Declined
ONC PCA Hormone Therapy-Not Recommended
ONC PCA Bilateral Orchiectomy
ONC PCA Surgery Lymph Node-Unknown
ONC PCA Surgery Lymph Node-No
ONC PCA Surgery Lymph Node-Yes
ONC PCA Surgery Type-Other

ONC PCA Surgery-TURP
ONC PCA Surgery-Pelvic Lymphadenectomy
ONC PCA Nerve Sparing-Unknown
ONC PCA Surgery-Not Nerve Sparing
ONC PCA Surgery-Nerve Sparing
ONC PCA Surgery-Prostatectomy
ONC PCA Surgery No-Other
ONC PCA Surgery-Tumor Not Resectable
ONC PCA Surgery-Declined
ONC PCA Surgery-Not Recommended
ONC PCA RT Stopped Pt Request
ONC PCA RT Stopped Progression
ONC PCA RT Stopped
ONC PCA RT Stopped Toxicity
ONC PCA RT Stopped Plan Complete
ONC PCA RT Other Stop Date-
ONC PCA RT Other Start Date-
ONC PCA RT Type Other-
ONC PCA RT Other
ONC PCA RT Type-Brachytherapy
ONC PCA External Beam Other Stop Date-
ONC PCA External Beam Other Start Date-
ONC PCA RT External Beam Other-
ONC PCA Conformal Proton RT Stop Date-
ONC PCA Conformal Proton RT Start Date-
ONC PCA Modulated RT Stop Date-
ONC PCA Modulated RT Start Date-
ONC PCA 3D Conformal Therapy Stop Date-
ONC PCA 3D Conformal Therapy Start Date-
ONC PCA RT-Patient Declined
ONC PCA RT-Not Recommended
ONC PCA RT Not Administered-
ONC PCA RT-No
ONC PCA Surveillance-
ONC PCA Surveillance-Needle Biopsy
ONC PCA Surveillance-Ultrasounds
ONC PCA Surveillance-PSA Tests
ONC PCA Surveillance-Rectal Exams
ONC PCA Surveillance-Regular Visits
ONC PCA Watchful Waiting-Yes
ONC PCA Active Surveillance-No
ONC PCA Treatment Discussed w/Pt-Unknown
ONC PCA Treatment Intent Discussed-No
ONC PCA Treatment Intent Discussed-Yes
ONC PCA Treatment-Palliative
ONC PCA Treatment-Curative
ONC PCA Tumor Board-Case Not Presented
ONC PCA Tumor Board-Not Available
ONC PCA Tumor Board-Case Presented
ONC PCA Referral Service:
ONC PCA Referral-Not Available
ONC PCA Referral-Not Eligible
ONC PCA Referral-Pt Declined
ONC PCA Palliative Care Referral
ONC PCA Hospice Referral

Prostate Cancer (ONC PCA) Diagnoses
ONC PCA Risk Status-High
ONC PCA Risk Status-Intermediate
ONC PCA Risk Status-Low
ONC PCA ECOG-Unknown
ONC PCA ECOG-5
ONC PCA ECOG-4
ONC PCA ECOG-3
ONC PCA ECOG-2
ONC PCA ECOG-1
ONC PCA ECOG-0
ONC PCA Gleason Score Combined-10
ONC PCA Gleason Score Combined-9
ONC PCA Gleason Score Combined-8
ONC PCA Gleason Score Combined-7
ONC PCA Gleason Score Combined-6
ONC PCA Gleason Score Combined-5
ONC PCA Gleason Score Combined-4
ONC PCA Gleason Score Combined-3
ONC PCA Gleason Score Combined-2
ONC PCA Gleason Score Two-5
ONC PCA Gleason Score Two-4
ONC PCA Gleason Score Two-3
ONC PCA Gleason Score Two-2
ONC PCA Gleason Score Two-1
ONC PCA Gleason Score One-5
ONC PCA Gleason Score One-4
ONC PCA Gleason Score One-3
ONC PCA Gleason Score One-2
ONC PCA Gleason Score One-1
ONC PCA Histology-Other:
ONC PCA Histology-Small Cell
ONC PCA Histology-Adenocarcinoma
ONC PCA Pathological-Summary Stage IV
ONC PCA Pathological-Summary Stage III
ONC PCA Pathological-Summary Stage IIB
ONC PCA Pathological-Summary Stage IIA
ONC PCA Pathological-Summary Stage I
ONC PCA Pathological Metastasis-M1c
ONC PCA Pathological Metastasis-M1b
ONC PCA Pathological Metastasis-M1a
ONC PCA Pathological Metastasis-M0
ONC PCA Pathological Lymph Nodes-N1
ONC PCA Pathological Lymph Nodes-N0
ONC PCA Pathological Lymph Nodes-Nx
ONC PCA Pathological Primary Tumor-T4
ONC PCA Pathological Primary Tumor-T3b
ONC PCA Pathological Primary Tumor-T3a
ONC PCA Pathological Primary Tumor-T2c
ONC PCA Pathological Primary Tumor-T2b
ONC PCA Pathological Primary Tumor-T2a
ONC PCA Pathological Stage Date
ONC PCA Clinical-Summary Stage IV
ONC PCA Clinical-Summary Stage III
ONC PCA Clinical-Summary Stage IIB

ONC PCA Clinical-Summary Stage IIA
ONC PCA Clinical-Summary Stage I
ONC PCA Clinical Metastasis-M1c
ONC PCA Clinical Metastasis-M1b
ONC PCA Clinical Metastasis-M1a
ONC PCA Clinical Metastasis-M0
ONC PCA Clinical Lymph Nodes-N1
ONC PCA Clinical Lymph Nodes-N0
ONC PCA Clinical Lymph Nodes-Nx
ONC PCA Clinical Primary Tumor-T2c
ONC PCA Clinical Primary Tumor-T2b
ONC PCA Clinical Primary Tumor-T2a
ONC PCA Clinical Primary Tumor-T1c
ONC PCA Clinical Primary Tumor-T1b
ONC PCA Clinical Primary Tumor-T1a
ONC PCA Clinical Primary Tumor-T0
ONC PCA Clinical Primary Tumor-Tx
ONC PCA Clinical Stage Date-
ONC PCA Diagnosis Date-
ONC PCA Lab Test-Other:
ONC PCA Clinical Primary Tumor-T3b
ONC PCA Clinical Primary Tumor-T3a
ONC PCA >12 Positive-Transperineal
ONC PCA >12 Positive-Transrectal
ONC PCA >12 Core-Transrectal
ONC PCA >12 Core-Transperineal
ONC PCA Biopsy-Transrectal
ONC PCA Biopsy-Transperineal
ONC PCA Surgery Outcome-Neg Margins
ONC PCA Surgery Outcome-+Margins
ONC PCA Surgery Outcome-Other
ONC PCA Surgery Outcome-Results Pending
ONC PCA 1 Core-Transperineal
ONC PCA 2 Core-Transperineal
ONC PCA 3 Core-Transperineal
ONC PCA 4 Core-Transperineal
ONC PCA 5 Core-Transperineal
ONC PCA 6 Core-Transperineal
ONC PCA 7 Core-Transperineal
ONC PCA 8 Core-Transperineal
ONC PCA 9 Core-Transperineal
ONC PCA 10 Core-Transperineal
ONC PCA 11 Core-Transperineal
ONC PCA 12 Core-Transperineal
ONC PCA 1 Pos Sample-Transperineal
ONC PCA 2 Pos Sample-Transperineal
ONC PCA 3 Pos Sample-Transperineal
ONC PCA 4 Pos Sample-Transperineal
ONC PCA 5 Pos Sample-Transperineal
ONC PCA 6 Pos Sample-Transperineal
ONC PCA 7 Pos Sample-Transperineal
ONC PCA 8 Pos Sample-Transperineal
ONC PCA 9 Pos Sample-Transperineal
ONC PCA 10 Pos Sample-Transperineal
ONC PCA 11 Pos Sample-Transperineal

ONC PCA 12 Pos Sample-Transperineal
ONC PCA Additional PSA
ONC PCA 1 Core-Transrectal
ONC PCA 2 Core-Transrectal
ONC PCA 3 Core-Transrectal
ONC PCA 4 Core-Transrectal
ONC PCA 5 Pos Sample-Transrectal
ONC PCA 6 Core-Transrectal
ONC PCA 7 Core-Transrectal
ONC PCA 8 Core-Transrectal
ONC PCA 9 Core-Transrectal
ONC PCA 10 Core-Transrectal
ONC PCA 11 Core-Transrectal
ONC PCA 12 Core-Transrectal
ONC PCA 1 Pos Sample-Transrectal
ONC PCA 2 Pos Sample-Transrectal
ONC PCA 3 Pos Sample-Transrectal
ONC PCA 4 Pos Sample-Transrectal
ONC PCA 5 Core-Transrectal
ONC PCA 6 Pos Sample-Transrectal
ONC PCA 7 Pos Sample-Transrectal
ONC PCA 8 Pos Sample-Transrectal
ONC PCA 9 Pos Sample-Transrectal
ONC PCA 10 Pos Sample-Transrectal
ONC PCA 11 Pos Sample-Transrectal
ONC PCA 12 Pos Sample-Transrectal
ONC PCA External Beam Start Date-
ONC PCA External Beam Stop Date-
ONC PCA Clinical Primary Tumor-T4
ONC PCA Additional Testosterone

REMINDER TERM

VA-ONC PCA CLINICAL TRAIL RT
VA-ONC PCA RESPONSE RT
VA-ONC PCA CRYOTHERAPY RT
VA-ONC PCA RADIOPHARM RT
VA-ONC PCA IMMUNE RT
VA-ONC PCA BIPHOSPHONATE RT
VA-ONC PCA STEROID RT
VA-ONC PCA CHEMO RT
VA-ONC PCA HORMONE RT
VA-ONC PCA SURGERY RT
VA-ONC PCA RT RT
VA-ONC PCA ACTIVE SURVEIL RT
VA-ONC PCA TREATMENT INTENT RT
VA-ONC PCA TUMOR BOARD RT
VA-ONC PCA TITLE RT
VA-ONC PCA RISK STATUS RT
VA-ONC PCA ECOG RT
VA-ONC PCA REFERRAL RT
VA-ONC PCA PATHOLOGY RT
VA-ONC PCA STAGING RT
VA-ONC PCA DX DATE RT

HEALTH SUMMARY COMPONENT

PCE HEALTH FACTORS SELECTED
LAB SURGICAL PATHOLOGY

HEALTH SUMMARY TYPE

VA-ONC PCA CLINICAL TRIAL
VA-ONC PCA RESPONSE
VA-ONC PCA CRYOTHERAPY
VA-ONC PCA RADIOPHARM
VA-ONC PCA IMMUNE
VA-ONC PCA BIPHOSH
VA-ONC PCA STEROID
VA-ONC PCA CHEMO
VA-ONC PCA HORMONE
VA-ONC PCA SURGERY
VA-ONC PCA RT
VA-ONC PCA ACTIVE SURVEIL
VA-ONC PCA TREATMENT INTENT
VA-ONC PCA TUMOR BOARD
VA-ONC PCA POST TREATMENT
VA-ONC PCA TREATMENTS
VA-ONC PCA DIAGNOSIS
VA-ONC PCA RISK STATUS
VA-ONC PCA ECOG
VA-ONC PCA REFERRAL
VA-ONC PCA SURG PATH REPORT
VA-ONC PCA STAGING
VA-ONC PCA TESTOSTERONE
VA-ONC PCA LAST PSA

HEALTH SUMMARY OBJECTS

VA-ONC PCA CLINICAL TRIAL
VA-ONC PCA RESPONSE
VA-ONC PCA CRYOTHERAPY
VA-ONC PCA RADIOPHARM
VA-ONC PCA IMMUNE
VA-ONC PCA BIPHOSH
VA-ONC PCA STEROID
VA-ONC PCA CHEMO
VA-ONC PCA HORMONE
VA-ONC PCA SURGERY
VA-ONC PCA RT
VA-ONC PCA ACTIVE SURVEIL
VA-ONC PCA TREATMENT INTENT
VA-ONC PCA TUMOR BOARD
VA-ONC PCA POST TREATMENT
VA-ONC PCA TREATMENTS
VA-ONC PCA DIAGNOSIS
VA-ONC PCA RISK STATUS
VA-ONC PCA ECOG
VA-ONC PCA REFERRAL
VA-ONC PCA SURG PATH REPORT
VA-ONC PCA STAGING
VA-ONC PCA TESTOSTERONE
VA-ONC PCA LAST PSA

TIU DOCUMENT DEFINITION

VA-ONC PCA CLINICAL TRIAL
VA-ONC PCA RESPONSE
VA-ONC PCA CRYOTHERAPY
VA-ONC PCA RADIOPHARM
VA-ONC PCA IMMUNE
VA-ONC PCA BIPHOSH
VA-ONC PCA STEROID
VA-ONC PCA CHEMO
VA-ONC PCA HORMONE
VA-ONC PCA SURGERY
VA-ONC PCA RT
VA-ONC PCA ACTIVE SURVEIL
VA-ONC PCA TREATMENT INTENT
VA-ONC PCA TUMOR BOARD
VA-ONC PCA POST TREATMENT
VA-ONC PCA TREATMENTS
VA-ONC PCA DIAGNOSIS
VA-ONC PCA RISK STATUS
VA-ONC PCA ECOG
VA-ONC PCA REFERRAL
VA-ONC PCA SURG PATH REPORT
VA-ONC PCA STAGING
VA-ONC PCA TESTOSTERONE
VA-ONC PCA LAST PSA

VA-Oncology Prostate MDC

VA-ONCOLOGY MDC PROSTATE

Components:

REMINDER DIALOG

VA-ONCOLOGY MDC PROSTATE

REMINDER SPONSOR

VHA ONCOLOGY

TIU TEMPLATE FIELD

GEN TEXT BOX 50
ALLCOMMENT(4LINES)
ONC MDC CLICK HERE TO INCLUDE
00 EDIT BOX 24

HEALTH FACTORS

Prostate Cancer (ONC PCA) Diagnoses
ONC PCA Tissue Sample Sent to POP
ONC PCA Tissue Sample Sent
ONC PCA ECOG-Unknown
ONC PCA ECOG-5
ONC PCA ECOG-4
ONC PCA ECOG-3
ONC PCA ECOG-2
ONC PCA ECOG-1
ONC PCA ECOG-0
ONC PCA Risk Status-High

ONC PCA Risk Status-Intermediate
ONC PCA Risk Status-Low
ONC PCA Diagnosis Date-
ONC PCA Gleason Score Combined-10
ONC PCA Gleason Score Combined-9
ONC PCA Gleason Score Combined-8
ONC PCA Gleason Score Combined-7
ONC PCA Gleason Score Combined-6
ONC PCA Gleason Score Combined-5
ONC PCA Gleason Score Combined-4
ONC PCA Gleason Score Combined-3
ONC PCA Gleason Score Combined-2
ONC PCA Gleason Score Two-5
ONC PCA Gleason Score Two-4
ONC PCA Gleason Score Two-3
ONC PCA Gleason Score Two-2
ONC PCA Gleason Score Two-1
ONC PCA Gleason Score One-5
ONC PCA Gleason Score One-4
ONC PCA Gleason Score One-3
ONC PCA Gleason Score One-2
ONC PCA Gleason Score One-1
ONC PCA Histology-Other:
ONC PCA Histology-Small Cell
ONC PCA Histology-Adenocarcinoma
ONC PCA Pathological-Summary Stage IV
ONC PCA Pathological-Summary Stage III
ONC PCA Pathological-Summary Stage IIB
ONC PCA Pathological-Summary Stage IIA
ONC PCA Pathological-Summary Stage I
ONC PCA Pathological Metastasis-M1c
ONC PCA Pathological Metastasis-M1b
ONC PCA Pathological Metastasis-M1a
ONC PCA Pathological Metastasis-M0
ONC PCA Pathological Lymph Nodes-N1
ONC PCA Pathological Lymph Nodes-N0
ONC PCA Pathological Lymph Nodes-Nx
ONC PCA Pathological Primary Tumor-T4
ONC PCA Pathological Primary Tumor-T3b
ONC PCA Pathological Primary Tumor-T3a
ONC PCA Pathological Primary Tumor-T2c
ONC PCA Pathological Primary Tumor-T2b
ONC PCA Pathological Primary Tumor-T2a
ONC PCA Pathological Stage Date
ONC PCA Clinical-Summary Stage IV
ONC PCA Clinical-Summary Stage III
ONC PCA Clinical-Summary Stage IIB
ONC PCA Clinical-Summary Stage IIA
ONC PCA Clinical-Summary Stage I
ONC PCA Clinical Metastasis-M1c
ONC PCA Clinical Metastasis-M1b
ONC PCA Clinical Metastasis-M1a
ONC PCA Clinical Metastasis-M0
ONC PCA Clinical Lymph Nodes-N1
ONC PCA Clinical Lymph Nodes-N0

ONC PCA Clinical Lymph Nodes-Nx
ONC PCA Clinical Primary Tumor-T2c
ONC PCA Clinical Primary Tumor-T2b
ONC PCA Clinical Primary Tumor-T2a
ONC PCA Clinical Primary Tumor-T1c
ONC PCA Clinical Primary Tumor-T1b
ONC PCA Clinical Primary Tumor-T1a
ONC PCA Clinical Primary Tumor-T0
ONC PCA Clinical Primary Tumor-Tx
ONC PCA Clinical Stage Date-
ONC PCA Lab Test-Other:
ONC PCA >12 Positive-Transperineal
ONC PCA 12 Pos Sample-Transperineal
ONC PCA 11 Pos Sample-Transperineal
ONC PCA 10 Pos Sample-Transperineal
ONC PCA 9 Pos Sample-Transperineal
ONC PCA 8 Pos Sample-Transperineal
ONC PCA 7 Pos Sample-Transperineal
ONC PCA 6 Pos Sample-Transperineal
ONC PCA 5 Pos Sample-Transperineal
ONC PCA 4 Pos Sample-Transperineal
ONC PCA 3 Pos Sample-Transperineal
ONC PCA 2 Pos Sample-Transperineal
ONC PCA 1 Pos Sample-Transperineal
ONC PCA >12 Core-Transperineal
ONC PCA 12 Core-Transperineal
ONC PCA 11 Core-Transperineal
ONC PCA 10 Core-Transperineal
ONC PCA 9 Core-Transperineal
ONC PCA 8 Core-Transperineal
ONC PCA 7 Core-Transperineal
ONC PCA 6 Core-Transperineal
ONC PCA 5 Core-Transperineal
ONC PCA 4 Core-Transperineal
ONC PCA 3 Core-Transperineal
ONC PCA 2 Core-Transperineal
ONC PCA 1 Core-Transperineal
ONC PCA Biopsy-Transperineal
ONC PCA >12 Core-Transrectal
ONC PCA 12 Core-Transrectal
ONC PCA 11 Core-Transrectal
ONC PCA 10 Core-Transrectal
ONC PCA 9 Core-Transrectal
ONC PCA 8 Core-Transrectal
ONC PCA 7 Core-Transrectal
ONC PCA 6 Core-Transrectal
ONC PCA 5 Core-Transrectal
ONC PCA 4 Core-Transrectal
ONC PCA 3 Core-Transrectal
ONC PCA 2 Core-Transrectal
ONC PCA 1 Core-Transrectal
ONC PCA >12 Positive-Transrectal
ONC PCA 12 Pos Sample-Transrectal
ONC PCA 11 Pos Sample-Transrectal
ONC PCA 10 Pos Sample-Transrectal

ONC PCA 9 Pos Sample-Transrectal
ONC PCA 8 Pos Sample-Transrectal
ONC PCA 7 Pos Sample-Transrectal
ONC PCA 6 Pos Sample-Transrectal
ONC PCA 5 Pos Sample-Transrectal
ONC PCA 4 Pos Sample-Transrectal
ONC PCA 3 Pos Sample-Transrectal
ONC PCA 2 Pos Sample-Transrectal
ONC PCA 1 Pos Sample-Transrectal
ONC PCA Biopsy-Transrectal
ONC PCA Surgery Outcome-Other
ONC PCA Surgery Outcome-Results Pending
ONC PCA Surgery Outcome-+Margins
ONC PCA Surgery Outcome-Neg Margins
Prostate Cancer (ONC PCA) Treatments
ONC PCA Surveillance-
ONC PCA Watchful Waiting-Yes
ONC PCA Surveillance-Needle Biopsy
ONC PCA Surveillance-Ultrasounds
ONC PCA Surveillance-PSA Tests
ONC PCA Surveillance-Rectal Exams
ONC PCA Surveillance-Regular Visits
ONC PCA Active Surveillance-No
ONC PCA Clinical Primary Tumor-T4
ONC PCA Clinical Primary Tumor-T3b
ONC PCA Clinical Primary Tumor-T3a
ONC PCA Tumor Board-Case Presented

REMINDER TERM

VA-ONC PCA ECOG RT
VA-ONC PCA RISK STATUS RT
VA-ONC PCA DX DATE RT
VA-ONC PCA PATHOLOGY RT
VA-ONC PCA STAGING RT

HEALTH SUMMARY COMPONENT

PCE HEALTH FACTORS SELECTED
LAB CYTOPATHOLOGY
LAB SURGICAL PATHOLOGY
SURGERY REPORTS BRIEF
IMAGING IMPRESSION

HEALTH SUMMARY TYPE

VA-ONC PCA ECOG
VA-ONC MDC PATH
VA-ONC MDC SURGERY
VA-ONC MDC RADIOLOGY
VA-ONC PCA RISK STATUS
VA-ONC PCA DIAGNOSIS
VA-ONC PCA ACTIVE SURVEIL
VA-ONC PCA SURG PATH REPORT
VA-ONC PCA STAGING

HEALTH SUMMARY OBJECTS

VA-ONC PCA ECOG
VA-ONC MDC THORACIC PATH
VA-ONC MDC THORACIC SURGERY
VA-ONC MDC THORACIC RADIOLOGY
VA-ONC PCA RISK STATUS
VA-ONC PCA DIAGNOSIS
VA-ONC PCA ACTIVE SURVEIL
VA-ONC PCA SURG PATH REPORT
VA-ONC PCA STAGING

TIU DOCUMENT DEFINITION

VA-ONC PCA ECOG
VA-ONC MDC PATH
VA-ONC MDC SURGERY
VA-ONC MDC RADIOLOGY
VA-ONC PCA RISK STATUS
VA-ONC PCA DIAGNOSIS
VA-ONC PCA ACTIVE SURVEIL
VA-ONC PCA SURG PATH REPORT
VA-ONC PCA STAGING

VA-Oncology Prostate Treatment Plan

VA-ONCOLOGY TREATMENT PLAN PROSTATE

Components:

TIU TEMPLATE FIELD

00 EDIT BOX 24
00 EDIT BOX 12
TEXT (1-20 CHAR)
ONCOLOGY YES NO
ONCOLOGY CHEMO ROUTE
WORD PROCESSING SHORT
ONCOLOGY SYMPTOM DURING

HEALTH FACTORS

Prostate Cancer (ONC PCA) Treatments
ONC PCA Chemo Not Administered-
ONC PCA Chemo No-Pt Declined
ONC PCA Chemo-Not Recommended
ONC PCA Chemo-No
Oncology (ONC) Colorectal (CRC) Treatmnt
ONC CRC Consent for Chemo Not Obtained
ONC CRC Consent for Chemo Obtained
ONC PCA RT Stopped Pt Request
ONC PCA RT Stopped Progression
ONC PCA RT Stopped
ONC PCA RT Stopped Toxicity
ONC PCA RT Stopped Plan Complete
ONC PCA RT Other Stop Date-
ONC PCA RT Other Start Date-
ONC PCA RT Type Other-
ONC PCA RT Other

ONC PCA RT Type-Brachytherapy
 ONC PCA External Beam Other Stop Date-
 ONC PCA External Beam Other Start Date-
 ONC PCA RT External Beam Other-
 ONC PCA Conformal Proton RT Stop Date-
 ONC PCA Conformal Proton RT Start Date-
 ONC PCA Modulated RT Stop Date-
 ONC PCA Modulated RT Start Date-
 ONC PCA 3D Conformal Therapy Stop Date-
 ONC PCA 3D Conformal Therapy Start Date-
 ONC PCA RT-Patient Declined
 ONC PCA RT-Not Recommended
 ONC PCA RT Not Administered-
 ONC PCA RT-No
 ONC PCA Surgery Lymph Node-Unknown
 ONC PCA Surgery Lymph Node-No
 ONC PCA Surgery Lymph Node-Yes
 ONC PCA Surgery Type-Other
 ONC PCA Surgery-TURP
 ONC PCA Surgery-Pelvic Lymphadenectomy
 ONC PCA Nerve Sparing-Unknown
 ONC PCA Surgery-Not Nerve Sparing
 ONC PCA Surgery-Nerve Sparing
 ONC PCA Surgery-Prostatectomy
 ONC PCA Surgery No-Other
 ONC PCA Surgery-Tumor Not Resectable
 ONC PCA Surgery-Declined
 ONC PCA Surgery-Not Recommended
 ONC PCA Treatment Discussed w/Pt-Unknown
 ONC PCA Treatment Intent Discussed-No
 ONC PCA Treatment Intent Discussed-Yes
 ONC PCA Treatment-Palliative
 ONC PCA Treatment-Curative
 Prostate Cancer (ONC PCA) Diagnoses
 ONC PCA >12 Positive-Transperineal
 ONC PCA 12 Pos Sample-Transperineal
 ONC PCA 11 Pos Sample-Transperineal
 ONC PCA 10 Pos Sample-Transperineal
 ONC PCA 9 Pos Sample-Transperineal
 ONC PCA 8 Pos Sample-Transperineal
 ONC PCA 7 Pos Sample-Transperineal
 ONC PCA 6 Pos Sample-Transperineal
 ONC PCA 5 Pos Sample-Transperineal
 ONC PCA 4 Pos Sample-Transperineal
 ONC PCA 3 Pos Sample-Transperineal
 ONC PCA 2 Pos Sample-Transperineal
 ONC PCA 1 Pos Sample-Transperineal
 ONC PCA >12 Core-Transperineal
 ONC PCA 12 Core-Transperineal
 ONC PCA 11 Core-Transperineal
 ONC PCA 10 Core-Transperineal
 ONC PCA 9 Core-Transperineal
 ONC PCA 8 Core-Transperineal
 ONC PCA 7 Core-Transperineal
 ONC PCA 6 Core-Transperineal

ONC PCA 5 Core-Transperineal
ONC PCA 4 Core-Transperineal
ONC PCA 3 Core-Transperineal
ONC PCA 2 Core-Transperineal
ONC PCA 1 Core-Transperineal
ONC PCA Biopsy-Transperineal
ONC PCA >12 Core-Transrectal
ONC PCA 12 Core-Transrectal
ONC PCA 11 Core-Transrectal
ONC PCA 10 Core-Transrectal
ONC PCA 9 Core-Transrectal
ONC PCA 8 Core-Transrectal
ONC PCA 7 Core-Transrectal
ONC PCA 6 Core-Transrectal
ONC PCA 5 Core-Transrectal
ONC PCA 4 Core-Transrectal
ONC PCA 3 Core-Transrectal
ONC PCA 2 Core-Transrectal
ONC PCA 1 Core-Transrectal
ONC PCA >12 Positive-Transrectal
ONC PCA 12 Pos Sample-Transrectal
ONC PCA 11 Pos Sample-Transrectal
ONC PCA 10 Pos Sample-Transrectal
ONC PCA 9 Pos Sample-Transrectal
ONC PCA 8 Pos Sample-Transrectal
ONC PCA 7 Pos Sample-Transrectal
ONC PCA 6 Pos Sample-Transrectal
ONC PCA 5 Pos Sample-Transrectal
ONC PCA 4 Pos Sample-Transrectal
ONC PCA 3 Pos Sample-Transrectal
ONC PCA 2 Pos Sample-Transrectal
ONC PCA 1 Pos Sample-Transrectal
ONC PCA Biopsy-Transrectal
ONC PCA Surgery Outcome-Other
ONC PCA Surgery Outcome-Results Pending
ONC PCA Surgery Outcome-+Margins
ONC PCA Surgery Outcome-Neg Margins
ONC PCA Gleason Score Combined-6
ONC PCA Gleason Score Combined-10
ONC PCA Gleason Score Combined-9
ONC PCA Gleason Score Combined-8
ONC PCA Gleason Score Combined-7
ONC PCA Gleason Score Combined-5
ONC PCA Gleason Score Combined-4
ONC PCA Gleason Score Combined-3
ONC PCA Gleason Score Combined-2
ONC PCA Gleason Score Two-5
ONC PCA Gleason Score Two-4
ONC PCA Gleason Score Two-3
ONC PCA Gleason Score Two-2
ONC PCA Gleason Score Two-1
ONC PCA Gleason Score One-5
ONC PCA Gleason Score One-4
ONC PCA Gleason Score One-3
ONC PCA Gleason Score One-2

ONC PCA Gleason Score One-1
ONC PCA Histology-Other:
ONC PCA Histology-Small Cell
ONC PCA Histology-Adenocarcinoma
ONC PCA Surveillance-
ONC PCA Watchful Waiting-Yes
ONC PCA Surveillance-Needle Biopsy
ONC PCA Surveillance-Ultrasounds
ONC PCA Surveillance-PSA Tests
ONC PCA Surveillance-Rectal Exams
ONC PCA Surveillance-Regular Visits
ONC PCA Active Surveillance-No
ONC PCA Pathological-Summary Stage IV
ONC PCA Pathological-Summary Stage III
ONC PCA Pathological-Summary Stage IIB
ONC PCA Pathological-Summary Stage IIA
ONC PCA Pathological-Summary Stage I
ONC PCA Pathological Metastasis-M1c
ONC PCA Pathological Metastasis-M1b
ONC PCA Pathological Metastasis-M1a
ONC PCA Pathological Metastasis-M0
ONC PCA Pathological Lymph Nodes-N1
ONC PCA Pathological Lymph Nodes-N0
ONC PCA Pathological Lymph Nodes-Nx
ONC PCA Pathological Primary Tumor-T4
ONC PCA Pathological Primary Tumor-T3b
ONC PCA Pathological Primary Tumor-T3a
ONC PCA Pathological Primary Tumor-T2c
ONC PCA Pathological Primary Tumor-T2b
ONC PCA Pathological Primary Tumor-T2a
ONC PCA Pathological Stage Date
ONC PCA Clinical-Summary Stage IV
ONC PCA Clinical-Summary Stage III
ONC PCA Clinical-Summary Stage IIB
ONC PCA Clinical-Summary Stage IIA
ONC PCA Clinical-Summary Stage I
ONC PCA Clinical Metastasis-M1c
ONC PCA Clinical Metastasis-M1b
ONC PCA Clinical Metastasis-M1a
ONC PCA Clinical Metastasis-M0
ONC PCA Clinical Lymph Nodes-N1
ONC PCA Clinical Lymph Nodes-N0
ONC PCA Clinical Lymph Nodes-Nx
ONC PCA Clinical Primary Tumor-T4
ONC PCA Clinical Primary Tumor-T3b
ONC PCA Clinical Primary Tumor-T3a
ONC PCA Clinical Primary Tumor-T2c
ONC PCA Clinical Primary Tumor-T2b
ONC PCA Clinical Primary Tumor-T2a
ONC PCA Clinical Primary Tumor-T1c
ONC PCA Clinical Primary Tumor-T1b
ONC PCA Clinical Primary Tumor-T1a
ONC PCA Clinical Primary Tumor-T0
ONC PCA Clinical Primary Tumor-Tx
ONC PCA Clinical Stage Date-

ONC PCA Diagnosis Date-

REMINDER SPONSOR

VHA ONCOLOGY

REMINDER TERMVA-ONC PCA RT RT

VA-ONC PCA SURGERY RT
VA-ONC PCA TREATMENT INTENT RT
VA-ONC PCA PATHOLOGY RT
VA-ONC PCA STAGING RT

REMINDER DIALOG

VA-ONCOLOGY TREATMENT PLAN PROSTATE

HEALTH SUMMARY COMPONENT

PCE HEALTH FACTORS SELECTED
LAB SURGICAL PATHOLOGY

HEALTH SUMMARY TYPE

VA-ONC PCA RT
VA-ONC PCA SURGERY
VA-ONC PCA TREATMENT INTENT
VA-ONC PCA ACTIVE SURVEIL
VA-ONC PCA SURG PATH REPORT
VA-ONC PCA STAGING
VA-ONC PCA DX DATE

HEALTH SUMMARY OBJECTS

VA-ONC PCA RT
VA-ONC PCA SURGERY
VA-ONC PCA TREATMENT INTENT
VA-ONC PCA ACTIVE SURVEIL
VA-ONC PCA SURG PATH REPORT
VA-ONC PCA STAGING
VA-ONC PCA TS DX DATE

TIU DOCUMENT DEFINITION

VA-ONC PCA RT
VA-ONC PCA SURGERY
VA-ONC PCA TREATMENT INTENT
VA-ONC PCA ACTIVE SURVEIL
VA-ONC PCA SURG PATH REPORT
VA-ONC PCA STAGING
VA-ONC PCA DX DATE
PATIENT HEIGHT
PATIENT WEIGHT
PATIENT DATE OF BIRTH
PATIENT NAME

VA-Oncology Prostate Treatment Summary

VA-ONCOLOGY TREATMENT SUMMARY PROSTATE

Components:

REMINDER DIALOG

VA-ONCOLOGY TREATMENT SUMMARY PROSTATE

REMINDER SPONSOR

VHA ONCOLOGY

TIU TEMPLATE FIELD

00 EDIT BOX 24

TEXT (1-60 CHAR)1

ONCOLOGY TRTMENT SYMPTOM

ONC FUTURE VISITS

HEALTH FACTORS

Oncology (ONC) Colorectal (CRC) FollowUp

ONC CRC Future Plan Other

ONC CRC Future Plan Observation

ONC CRC Future Plan Surgery

ONC CRC Future Plan Radiation Therapy

ONC CRC Future Plan Chemotherapy

Prostate Cancer (ONC PCA) Treatments

ONC PCA Radiopharm Stopped

ONC PCA Radiopharm Stopped Pt Request

ONC PCA Radiopharm Stopped Progression

ONC PCA Radiopharm Stopped Toxic

ONC PCA Radiopharm Stopped Plan Complete

ONC PCA Radiopharm Not Admin-

ONC PCA Radiopharm-Pt Declined

ONC PCA Radiopharm-Not Recommended

ONC PCA Radiopharmaceuticals Stop Date-

ONC PCA Radiopharmaceuticals Start Date-

ONC PCA Radium 223 Stop Date-

ONC PCA Radium 223 Start Date-

ONC PCA Radiopharm Other

ONC PCA Cryotherapy Stop Date-

ONC PCA Cryotherapy Start Date-

ONC PCA Cryotherapy Not Admin-

ONC PCA Cryotherapy-Pt Declined

ONC PCA Cryotherapy-Not Recommended

ONC PCA Biphosphonate Plan Complete

ONC PCA Biphosphonate Stopped

ONC PCA Biphosphonate Stopped Pt Request

ONC PCA Chemo Stopped Progression

ONC PCA Biphosphonate Stopped Toxic

ONC PCA Denosumab Stop Date-

ONC PCA Denosumab Start Date-

ONC PCA Biphosphonate Other Stop Date-

ONC PCA Biphosphonate Other Start Date-

ONC PCA Biphosphonate Other-

ONC PCA Pamidronate Stop Date-

ONC PCA Pamidronate Start Date-

ONC PCA Zoledronic Acid Stop Date-

ONC PCA Zoledronic Acid Start Date-

ONC PCA Biphosphonate Not Admin-

ONC PCA Biphosphonate-Pt Declined

ONC PCA Biphosphonate-Not Recommended

ONC Immunotherapy Stopped Plan Complete
ONC Immunotherapy Stopped
ONC Immunotherapy Stopped Pt Request
ONC Immunotherapy Stopped Progression
ONC Immunotherapy Stopped Toxic
ONC PCA Immunotherapy Other Stop Date-
ONC PCA Immunotherapy Other Start Date-
ONC PCA Immunotherapy-
ONC PCA Sipuleucel-T Stop Date-
ONC PCA Sipuleucel-T Start Date-
ONC PCA Immunotherapy Not Admin-
ONC PCA Immunotherapy-Pt Declined
ONC PCA Immunotherapy-Not Recommended
ZZCCC LUNG DISTANT METS
ZZONC PCA Watchful Waiting-No
ONC PCA Watchful Waiting-Yes
ONC PCA Surveillance-
ONC PCA Surveillance-Needle Biopsy
ONC PCA Surveillance-Ultrasounds
ONC PCA Surveillance-PSA Tests
ONC PCA Surveillance-Rectal Exams
ONC PCA Surveillance-Regular Visits
ONC PCA Active Surveillance-No
ONC PCA RT Other Stop Date-
ONC PCA RT Other Start Date-
ONC PCA RT Type Other-
ONC PCA RT Other
ONC PCA RT Type-Brachytherapy
ONC PCA External Beam Other Stop Date-
ONC PCA External Beam Other Start Date-
ONC PCA RT External Beam Other-
ONC PCA Conformal Proton RT Stop Date-
ONC PCA Conformal Proton RT Start Date-
ONC PCA Modulated RT Stop Date-
ONC PCA Modulated RT Start Date-
ONC PCA 3D Conformal Therapy Stop Date-
ONC PCA 3D Conformal Therapy Start Date-
ONC PCA RT Stopped Pt Request
ONC PCA RT Stopped Progression
ONC PCA RT Stopped
ONC PCA RT Stopped Toxicity
ONC PCA RT Stopped Plan Complete
ONC PCA RT-Patient Declined
ONC PCA RT-Not Recommended
ONC PCA RT Not Administered-
ONC PCA Steroid Stopped Plan Complete
ONC PCA Steroid Stopped
ONC PCA Steroid Stopped Pt Request
ONC PCA Steroid Stopped Progression
ONC PCA Steroid Stopped Toxic
ONC PCA Steroids Other Stop Date-
ONC PCA Steroids Other Start Date-
ONC PCA Steroids Other-
ONC PCA Dexamethasone Stop Date-
ONC PCA Dexamethasone Start Date-

ONC PCA Prednisone Stop Date-
ONC PCA Prednisone Start Date-
ONC PCA Steroids Not Administered-
ONC PCA Steroids-Pt Declined
ONC PCA Steroids-Not Recommended
ONC PCA Chemo Stopped Plan Complete
ONC PCA Chemo Stopped
ONC PCA Chemo Stopped Pt Request
ONC PCA Chemo Stopped Toxicity
ONC PCA Docetaxel Stop Date-
ONC PCA Docetaxel Start Date-
ONC PCA Chemo Other Stop Date-
ONC PCA Chemo Other Start Date-
ONC PCA Chemo Type-
ONC PCA Estramustine Start Date-
ONC PCA Estramustine Stop Date-
ONC PCA Mitoxantrone Stop Date-
ONC PCA Mitoxantrone Start Date-
ONC PCA Cabazitaxel Stop Date-
ONC PCA Cabazitaxel Start Date-
ONC PCA Chemo Not Administered-
ONC PCA Chemo No-Pt Declined
ONC PCA Chemo-Not Recommended
ONC PCA Surgery Lymph Node-Unknown
ONC PCA Surgery Lymph Node-No
ONC PCA Surgery Lymph Node-Yes
ONC PCA Surgery Type-Other
ONC PCA Nerve Sparing-Unknown
ONC PCA Surgery-Not Nerve Sparing
ONC PCA Surgery-Nerve Sparing
ONC PCA Surgery-Prostatectomy
ONC PCA Surgery-TURP
ONC PCA Surgery-Pelvic Lymphadenectomy
ONC PCA Surgery No-Other
ONC PCA Surgery-Tumor Not Resectable
ONC PCA Surgery-Declined
ONC PCA Surgery-Not Recommended
ONC PCA Hormone Stopped Plan Complete
ONC PCA Hormone Therapy Stopped
ONC PCA Hormone Stopped Pt Request
ONC PCA Hormone Stopped Progression
ONC PCA Hormone Stopped Toxic
ONC PCA Other Therapy Stop Date-
ONC PCA Other Therapy Start Date-
ONC PCA Hormone Therapy Other Type-
ONC PCA Bilateral Orchiectomy
ONC PCA Estrogen Stop Date-
ONC PCA Estrogen Start Date-
ONC PCA GnRH Other Stop Date-
ONC PCA GnRH Other Start Date-
ONC PCA GnRH-Other
ONC PCA Leuprolide Stop Date-
ONC PCA Leuprolide Start Date-
ONC PCA Triptorelin Stop Date-
ONC PCA Triptorelin Start Date-

ONC PCA Buserlin Stop Date-
ONC PCA Buserlin Start Date-
ONC PCA Goserelin Stop Date-
ONC PCA Goserelin Start Date-
ONC PCA Androgen Synthesis Stop Date-
ONC PCA Androgen Synthesis Start Date-
ONC PCA Androgen Synthesis-Other
ONC PCA Ketoconazole Stop Date-
ONC PCA Ketoconazole Start Date-
ONC PCA Abiraterone Stop Date-
ONC PCA Abiraterone Start Date-
ONC PCA Flutamide Stop Date-
ONC PCA Flutamide Start Date-
ONC PCA Enzalutamide Stop Date-
ONC PCA Enzalutamide Start Date-
ONC PCA Bicalutamide Stop Date-
ONC PCA Bicalutamide Start Date-
ONC PCA Anti-Androgen Other Stop Date-
ONC PCA Anti-Androgen Other Start Date-
ONC PCA Anti Androgen-Other
ONC PCA Megestrol Stop Date-
ONC PCA Megestrol Start Date-
ONC PCA Nilutamide Stop Date-
ONC PCA Nilutamide Start Date-
ONC PCA Hormone Therapy No-Other
ONC PCA Hormone Therapy-Pt Declined
ONC PCA Hormone Therapy-Not Recommended
Prostate Cancer (ONC PCA) Follow-Up
ONC PCA Follow Up-Not Determined
ONC PCA Follow Up-Recurrence of Disease
ONC PCA Follow Up-No Recurrence
ONC PCA Follow Up-Progression of Disease
ONC PCA Follow Up-Stable Disease
ONC PCA Follow Up-Partial Response
ONC PCA Follow Up-Complete Response
ONC PCA Toxicities/Hospitalizations
Prostate Cancer (ONC PCA) Diagnoses
ONC PCA ECOG-Unknown
ONC PCA ECOG-5
ONC PCA ECOG-4
ONC PCA ECOG-3
ONC PCA ECOG-2
ONC PCA ECOG-1
ONC PCA ECOG-0
ONC PCA >12 Positive-Transperineal
ONC PCA 12 Pos Sample-Transperineal
ONC PCA 11 Pos Sample-Transperineal
ONC PCA 10 Pos Sample-Transperineal
ONC PCA 9 Pos Sample-Transperineal
ONC PCA 8 Pos Sample-Transperineal
ONC PCA 7 Pos Sample-Transperineal
ONC PCA 6 Pos Sample-Transperineal
ONC PCA 5 Pos Sample-Transperineal
ONC PCA 4 Pos Sample-Transperineal
ONC PCA 3 Pos Sample-Transperineal

ONC PCA 2 Pos Sample-Transperineal
ONC PCA 1 Pos Sample-Transperineal
ONC PCA >12 Core-Transperineal
ONC PCA 12 Core-Transperineal
ONC PCA 11 Core-Transperineal
ONC PCA 10 Core-Transperineal
ONC PCA 9 Core-Transperineal
ONC PCA 8 Core-Transperineal
ONC PCA 7 Core-Transperineal
ONC PCA 6 Core-Transperineal
ONC PCA 5 Core-Transperineal
ONC PCA 4 Core-Transperineal
ONC PCA 3 Core-Transperineal
ONC PCA 2 Core-Transperineal
ONC PCA 1 Core-Transperineal
ONC PCA Biopsy-Transperineal
ONC PCA >12 Core-Transrectal
ONC PCA 12 Core-Transrectal
ONC PCA 11 Core-Transrectal
ONC PCA 10 Core-Transrectal
ONC PCA 9 Core-Transrectal
ONC PCA 8 Core-Transrectal
ONC PCA 7 Core-Transrectal
ONC PCA 6 Core-Transrectal
ONC PCA 5 Core-Transrectal
ONC PCA 4 Core-Transrectal
ONC PCA 3 Core-Transrectal
ONC PCA 2 Core-Transrectal
ONC PCA 1 Core-Transrectal
ONC PCA >12 Positive-Transrectal
ONC PCA 12 Pos Sample-Transrectal
ONC PCA 11 Pos Sample-Transrectal
ONC PCA 10 Pos Sample-Transrectal
ONC PCA 9 Pos Sample-Transrectal
ONC PCA 8 Pos Sample-Transrectal
ONC PCA 7 Pos Sample-Transrectal
ONC PCA 6 Pos Sample-Transrectal
ONC PCA 5 Pos Sample-Transrectal
ONC PCA 4 Pos Sample-Transrectal
ONC PCA 3 Pos Sample-Transrectal
ONC PCA 2 Pos Sample-Transrectal
ONC PCA 1 Pos Sample-Transrectal
ONC PCA Biopsy-Transrectal
ONC PCA Surgery Outcome-Other
ONC PCA Surgery Outcome-Results Pending
ONC PCA Surgery Outcome-+Margins
ONC PCA Surgery Outcome-Neg Margins
ONC PCA Gleason Score Combined-6
ONC PCA Gleason Score Combined-10
ONC PCA Gleason Score Combined-9
ONC PCA Gleason Score Combined-8
ONC PCA Gleason Score Combined-7
ONC PCA Gleason Score Combined-5
ONC PCA Gleason Score Combined-4
ONC PCA Gleason Score Combined-3

ONC PCA Gleason Score Combined-2
ONC PCA Gleason Score Two-5
ONC PCA Gleason Score Two-4
ONC PCA Gleason Score Two-3
ONC PCA Gleason Score Two-2
ONC PCA Gleason Score Two-1
ONC PCA Gleason Score One-5
ONC PCA Gleason Score One-4
ONC PCA Gleason Score One-3
ONC PCA Gleason Score One-2
ONC PCA Gleason Score One-1
ONC PCA Histology-Other:
ONC PCA Histology-Small Cell
ONC PCA Histology-Adenocarcinoma
ONC PCA Pathological-Summary Stage IV
ONC PCA Pathological-Summary Stage III
ONC PCA Pathological-Summary Stage IIB
ONC PCA Pathological-Summary Stage IIA
ONC PCA Pathological-Summary Stage I
ONC PCA Pathological Lymph Nodes-N1
ONC PCA Pathological Lymph Nodes-N0
ONC PCA Pathological Lymph Nodes-Nx
ONC PCA Pathological Metastasis-M1c
ONC PCA Pathological Metastasis-M1b
ONC PCA Pathological Metastasis-M1a
ONC PCA Pathological Metastasis-M0
ONC PCA Pathological Primary Tumor-T4
ONC PCA Pathological Primary Tumor-T3b
ONC PCA Pathological Primary Tumor-T3a
ONC PCA Pathological Primary Tumor-T2c
ONC PCA Pathological Primary Tumor-T2b
ONC PCA Pathological Primary Tumor-T2a
ONC PCA Pathological Stage Date
ONC PCA Clinical-Summary Stage IV
ONC PCA Clinical-Summary Stage I
ONC PCA Clinical-Summary Stage III
ONC PCA Clinical-Summary Stage IIB
ONC PCA Clinical-Summary Stage IIA
ONC PCA Clinical Lymph Nodes-N0
ONC PCA Clinical Lymph Nodes-N1
ONC PCA Clinical Lymph Nodes-Nx
ONC PCA Clinical Metastasis-M1c
ONC PCA Clinical Metastasis-M1b
ONC PCA Clinical Metastasis-M0
ONC PCA Clinical Metastasis-M1a
ONC PCA Clinical Primary Tumor-T1c
ONC PCA Clinical Primary Tumor-T2c
ONC PCA Clinical Primary Tumor-T3b
ONC PCA Clinical Primary Tumor-T0
ONC PCA Clinical Primary Tumor-T4
ONC PCA Clinical Primary Tumor-T3a
ONC PCA Clinical Primary Tumor-T2b
ONC PCA Clinical Primary Tumor-T2a
ONC PCA Clinical Primary Tumor-T1b
ONC PCA Clinical Primary Tumor-T1a

ONC PCA Clinical Primary Tumor-Tx
ONC PCA Clinical Stage Date-
ONC PCA Diagnosis Date-

HEALTH SUMMARY COMPONENT

PCE HEALTH FACTORS SELECTED

HEALTH SUMMARY TYPE

VA-ONC PCA RADIOPHARM
VA-ONC PCA CRYOTHERAPY
VA-ONC PCA BIPHOSH
VA-ONC PCA IMMUNE
VA-ONC PCA WATCHFUL WAIT
VA-ONC PCA ACTIVE SURVEIL
VA-ONC PCA RT
VA-ONC PCA STEROID
VA-ONC PCA CHEMO
VA-ONC PCA SURGERY
VA-ONC PCA HORMONE
VA-ONC PCA RESPONSE
VA-ONC PCA ECOG
VA-ONC PCA PATHOLOGY
VA-ONC PCA STAGING
VA-ONC PCA DX DATE

HEALTH SUMMARY OBJECTS

VA-ONC PCA RADIOPHARM
VA-ONC PCA CRYOTHERAPY
VA-ONC PCA BIPHOSH
VA-ONC PCA IMMUNE
VA-ONC PCA WATCHFUL WAIT
VA-ONC PCA ACTIVE SURVEIL
VA-ONC PCA RT
VA-ONC PCA STEROID
VA-ONC PCA CHEMO
VA-ONC PCA SURGERY
VA-ONC PCA HORMONE
VA-ONC PCA RESPONSE
VA-ONC PCA ECOG
VA-ONC PCA PATHOLOGY
VA-ONC PCA STAGING
VA-ONC PCA TS DX DATE

TIU DOCUMENT DEFINITION

VA-ONC PCA RADIOPHARM
VA-ONC PCA CRYOTHERAPY
VA-ONC PCA BIPHOSH
VA-ONC PCA IMMUNE
VA-ONC PCA WATCHFUL WAIT
VA-ONC PCA ACTIVE SURVEIL
VA-ONC PCA RT
VA-ONC PCA STEROID
VA-ONC PCA CHEMO
VA-ONC PCA SURGERY

VA-ONC PCA HORMONE
VA-ONC PCA RESPONSE
VA-ONC PCA ECOG
VA-ONC PCA PATHOLOGY
VA-ONC PCA STAGING
VA-ONC PCA DX DATE

Install Details

This update is being distributed as a web host file. The address for the host file is:

http://REDACTED/UPDATE_2_0_20_1.PRD

The file will be installed using Reminder Exchange, programmer access is not required.

Installation:

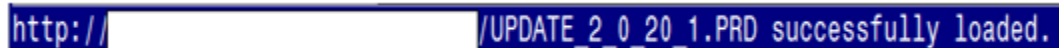
=====
This update can be loaded with users on the system. Installation will take approximately 1.5 hours per exchange entry. Since there are 4 exchange entries, the total time will be approximately 6 hours.

Install Example To Load the Web Host File. Navigate to Reminder exchange in Vista

At the **Select Action:** prompt, enter **LWH** for Load Web Host File

At the **Input the url for the .prd file:** prompt, type or copy/paste the following web address:

http://REDACTED/UPDATE_2_0_20_1.PRD



The screenshot shows a terminal window with a dark blue background and white text. The text reads: `http://[REDACTED]/UPDATE_2_0_20_1.PRD successfully loaded.` The [REDACTED] portion is represented by a white rectangular box.

You should see a message at the top of your screen that the file successfully loaded.

Note: This will install 4 new reminder exchange entries.

UPDATE_2_0_20 BREAST CANCER DIALOGS

UPDATE_2_0_20 LUNG CANCER DIALOGS

UPDATE_2_0_20 PROSTATE CANCER DIALOGS

UPDATE_2_0_20 COLON CANCER DIALOGS

```

Clinical Reminder Exchange   Oct 27, 2016@13:07:52   Page: 31 of 55
Exchange File Entries.

```

+Item	Entry	Source	Date Packed
231	UPDATE_2_0_17 VA-WH PRECONCEPT ION CARE		10/13/2016@05:00
232	UPDATE_2_0_18 MISC UPDATE 2		10/20/2016@12:42
233	UPDATE_2_0_19 VA-CSC INITIAL CAREGIVER ASSESSMENT		08/31/2016@07:19
234	UPDATE_2_0_1_2 BENEFICIARY TRAVEL/EBOLA UPDATE		01/25/2016@05:08
235	UPDATE_2_0_2 CAREGIVER ELIG		02/18/2016@13:10
236	UPDATE_2_0_4 VA-VETERANS CHOICE/MAMMOGRAM/TBI UPDATE		12/07/2015@06:03

```

+      + Next Screen  - Prev Screen  ?? More Actions  >>>
CFE Create Exchange File Entry      IH  Installation History
CHF Create Host File                 LHF Load Host File
CMM Create MailMan Message           LMM Load MailMan Message
DFE Delete Exchange File Entry       LWH Load Web Host File
IFE Install Exchange File Entry       RI  Reminder Definition Inquiry
Select Action: Next Screen// LWH  Load Web Host File
Input the URL for the .prd file: http:// [redacted] /UPDATE_2_0_20_1.PRD

```

Search and locate each entry name in reminder exchange

At the **Select Action** prompt, enter **IFE** for Install Exchange File Entry
 Site will have to choose the 4 Item numbers that are associated with the correct exchange files installed. Choose the first Item number and use the IA option. The example below will use the Breast Cancer Dialog (*Item 236 in the account the screenshot was taken*). You will follow same process with the rest of the dialogs

+Item	Entry	Source	Date Packed
236	UPDATE_2_0_20 BREAST CANCER DIALOGS		10/28/2016@10:38
237	UPDATE_2_0_20 COLON CANCER DIALOGS		10/28/2016@10:40
238	UPDATE_2_0_20 LUNG CANCER DIALOGS		10/28/2016@10:42
239	UPDATE_2_0_20 PROSTATE CANCER DIALOGS		10/28/2016@10:44
240	UPDATE_2_0_4 VA-VETERANS CHOICE/MAMMOGRAM/TBI UPDATE		12/07/2015@06:03
+ + Next Screen - Prev Screen ?? More Actions >>>			
CFE	Create Exchange File Entry	IH	Installation History
CHF	Create Host File	LHF	Load Host File
CMM	Create MailMan Message	LMM	Load MailMan Message
DFE	Delete Exchange File Entry	LWH	Load Web Host File
IFE	Install Exchange File Entry	RI	Reminder Definition Inquiry
Select Action: Next Screen// IFE Install Exchange File Entry			
Enter a list or range of numbers (1-401): 236			

Note: Each Cancer type (exchange file) install will take approximately 1.5 hours to complete.

```

Component                                     Category   Exists
Source:      HAMILTON-HILL,SUSAN at SALT LAKE CITY
Date Packed: 10/28/2016@10:38:38
Package Version: 2.0P63

Description:
The following Clinical Reminder items were selected for packing:
REMINDER DIALOG
  VA-ONCOLOGY BREAST CANCER
  VA-ONCOLOGY TREATMENT SUMMARY BREAST
  VA-ONCOLOGY MDC BREAST
  VA-ONCOLOGY TREATMENT PLAN BREAST
Non-exchangeable TIU object(s):
-----
TIU Object: PATIENT NAME
Object Method: S X=$$NAME^TIULO(DFN)

+      Enter ?? for more actions      >>>
IA  Install all Components             IS  Install Selected Component
Select Action: Next Screen// IA

```

At the **Select Action** prompt, type **IA** for Install all Components and hit enter.

During the install, when you are prompted that a component is new, hit ENTER to choose the INSTALL default action. **During any time in the install you are prompted that a Reminder term exists, but it is different from the packed component, you should use the MERGE option to not overwrite your current mapped items.**

REMINDER TERM entry named <Reminder Term Name> already exists but the packed component is different, what do you want to do?

Select one of the following:

- C Create a new entry by copying to a new name
- M Merge findings
- O Overwrite the current entry
- U Update

- Q Quit the install
- S Skip, do not install this entry

Enter response: O//**MERGE**

After install of initial reminder components, you will then be prompted to install the dialogs. Because there are 4 reminder dialogs in each exchange file, you will be prompted 4 separate times to install the dialog components.

Dialog Components		Oct 28, 2016@11:38:36	Page: 1 of 97
Packed reminder dialog: VA-ONCOLOGY TREATMENT SUMMARY BREAST [NATIONAL DIALOG]			
Item	Seq. Dialog Findings	Type	Exists
1	VA-ONCOLOGY TREATMENT SUMMARY BREAST	dialog	X
2	5 VA-GP ONCOLOGY TREATMENT SUMMARY TITLE Finding: *NONE*	group	X
3	10 VA-GP ONC TREATMENT SUMMARY INSTRUCTIONS Finding: *NONE*	group	X
4	10.5 VA-EL ONC TS INSTRUCTIONS Finding: *NONE*	element	X
5	20 VA-EL ONCOLOGY PATIENT INFO HSO Finding: *NONE*	element	X
6	30 VA-BLANK LINE IN PN Finding: *NONE*	element	X
+ + Next Screen - Prev Screen ?? More Actions			
DD	Dialog Details	DT Dialog Text	IS Install Selected
DF	Dialog Findings	DU Dialog Usage	QU Quit
DS	Dialog Summary	IA Install All	
Select Action: Next Screen// IA			

At the **Select Action** prompt, type **IA** to install the dialog –
Once the install is complete for a particular dialog, you will be returned to the screen above.
There will be an “X” in the Exists column after install. **Next you will enter Q to quit and this will take you to the next dialog for installation.** Continue to repeat these steps until all 4 of the dialogs have been installed for the particular exchange file you selected. Once you finish the install of all the dialogs, you will enter **Q** and you will then be given an opportunity to install any other components.

```
Component Category Exists
Source:
Date Packed: 10/28/2016@10:38:38
Package Version: 2.0P63

Description:
The following Clinical Reminder items were selected for packing:
REMINDER DIALOG
  VA-ONCOLOGY BREAST CANCER
  VA-ONCOLOGY TREATMENT SUMMARY BREAST
  VA-ONCOLOGY MDC BREAST
  VA-ONCOLOGY TREATMENT PLAN BREAST
Non-exchangeable TIU object(s):
-----
TIU Object: PATIENT NAME
Object Method: S X=$$NAME^TIULO(DFN)

+ Enter ?? for more actions >>>
IA Install all Components IS Install Selected Component
Select Action: Next Screen// Q
```

After all components have been installed, you will then be returned to this screen. At the **Select Action** prompt, type **Q**.

Install Completed

Post Installation Set-up Instructions

1. Configuring two new health summary types

There are two TIU objects that are embedded in the VA-Oncology Prostate reminder dialog that need mapping to local labs test. You will need to know your local lab test names in order to correctly map these objects. Detailed instructions for editing the health summary types follow.

a. HEALTH SUMMARY TYPE: VA-ONC PCA TESTOSTERONE

1. What are the local lab test name(s) for Testosterone?

b. HEALTH SUMMARY TYPE:VA-ONC PCA LAST PSA

1. What are the local lab test name(s) for Prostate-Specific Antigen?

The following is an example of modifying the health summary type: **VA-ONC PCA TESTOSTERONE**. The same process should be followed for editing the health summary type: **VA-ONC PCA LAST PSA**.

From Health Summary Maintenance Menu

```
1  DISABLE/ENABLE HEALTH SUMMARY COMPONENT
2  CREATE/MODIFY HEALTH SUMMARY COMPONENTS
3  EDIT AD HOC HEALTH SUMMARY TYPE
4  REBUILD AD HOC HEALTH SUMMARY TYPE
5  RESEQUENCE A HEALTH SUMMARY TYPE
6  CREATE/MODIFY HEALTH SUMMARY TYPE
7  EDIT HEALTH SUMMARY SITE PARAMETERS
8  HEALTH SUMMARY OBJECTS MENU ...
9  CPRS REPORTS TAB 'HEALTH SUMMARY TYPES LIST' MENU ...
10 CPRS HEALTH SUMMARY DISPLAY/EDIT SITE DEFAULTS ...
```

```
SELECT HEALTH SUMMARY MAINTENANCE MENU <TEST ACCOUNT> OPTION: 6
CREATE/MODIFY HEALTH SUMMARY TYPE
```

```
SELECT HEALTH SUMMARY TYPE: VA-ONC PCA TESTOSTERONE
```

```
VA-ONC PCA TESTOSTERONE HAS (NO COMPONENTS)
```

```
OK? YES//
```

```
WARNING: YOU ARE ABOUT TO EDIT A HEALTH SUMMARY TYPE THAT IS BEING USED
BY A HEALTH SUMMARY OBJECT. CHANGING THE STRUCTURE OF THIS HEALTH SUMMARY
TYPE WILL ALTER HOW THE OBJECT WILL DISPLAY.
```

```
DO WANT TO CONTINUE? NO// Y YES
NAME: VA-ONC PCA TESTOSTERONE REPLACE
TITLE: TESTOSTERONE REPLACE
SUPPRESS PRINT OF COMPONENTS WITHOUT DATA: YES//
SUPPRESS SENSITIVE PRINT DATA: NO SSN
LOCK:
```

OWNER:

DO YOU WISH TO COPY COMPONENTS FROM AN EXISTING HEALTH SUMMARY TYPE? YES//NO

SELECT COMPONENT: SLT LAB TESTS SELECTED SLT

SUMMARY ORDER: 5// 5

OCCURRENCE LIMIT: 10

TIME LIMIT:

HEADER NAME: LAB TESTS SELECTED//

NO SELECTION ITEMS CHOSEN.

SELECT NEW ITEMS ONE AT A TIME IN THE SEQUENCE YOU WANT THEM DISPLAYED.
YOU MAY SELECT UP TO 99 ITEMS.

SELECT SELECTION ITEM: ENTER EXACT NAME OF LOCAL TESTOSTERONE LAB TEST. YOU CAN ENTER MORE THAN ONE AT THE NEXT PROMPT IF NEEDED

The VA-ONC PCA TESTOSERONE Health Summary Type Structure should look similar to this:

TYPE NAME: VA-ONC PCA TESTOSTERONE

TITLE: TESTOSTERONE

OWNER:

SUPPRESS PRINT OF COMPONENTS WITHOUT DATA: YES

SUPPRESS SENSITIVE PRINT DATA:

ABB	ORD	COMPONENT NAME	MAX OCC	TIME	HOS LOC	ICD TEXT	PRO NAR	CPT MOD	SELECTION
SLT	5	LAB TESTS SELECTED	10						TESTOSTERONE

The VA-ONC PCA LAST PSA Health Summary Type Structure should look similar to this:

TYPE NAME: VA-ONC PCA LAST PSA

TITLE: PSA

OWNER:

SUPPRESS PRINT OF COMPONENTS WITHOUT DATA: YES

SUPPRESS SENSITIVE PRINT DATA:

ABB	ORD	COMPONENT NAME	MAX OCC	TIME	HOS LOC	ICD TEXT	PRO NAR	CPT MOD	SELECTION
SLT	5	LAB TESTS SELECTED	10						PROSTATE SPECIFIC ANTIGEN

2. Replace embedded TIU Objects in the following element only if National objects does not exist or work properly.

Dialog: VA-EL ONCOLOGY PATIENT INFO HSO

Embedded TIU Objects:	Description
PATIENT NAME	Displays patient name
PATIENT DATE OF BIRTH	Displays patient's date of birth
PATIENT WEIGHT	Displays patient's weight
PATIENT HEIGHT	Displays patient's height

3. Enable the dialog.

Adding dialog to the TIU Reminder Dialog Parameter (starting from the Reminder Manager Menu).

The following is an example of enabling a dialog so that it can be attached to a Personal or Shared template or note title. You will need to repeat this step for all of the dialogs contained in this update.

Select Reminder Managers Menu <TEST ACCOUNT> Option: **CP** CPRS Reminder Configuration

From the Reminders Manager Menu Option:

- CA Add/Edit Reminder Categories
- CL CPRS Lookup Categories
- CS CPRS Cover Sheet Reminder List
- MH Mental Health Dialogs Active
- PN Progress Note Headers
- RA Reminder GUI Resolution Active
- TIU TIU Template Reminder Dialog Parameter**
- DL Default Outside Location
- PT Position Reminder Text at Cursor
- NP New Reminder Parameters
- GEC GEC Status Check Active
- WH WH Print Now Active

Select CPRS Reminder Configuration <TEST ACCOUNT> Option: **TIU** TIU Template Reminder Dialog Parameter

Reminder Dialogs allows as Templates may be set for the following:

- 1 User USR [choose from NEW PERSON]
- 3 Service SRV [choose from SERVICE/SECTION]
- 4 Division DIV [NAME OF YOUR DIVISION]

5 System SYS [YOURSERVER.YOURSITE.MED.VA.GOV]

Enter selection: 5 System [YOURSERVER.YOURSITE.MED.VA.GOV]

Setting Reminder Dialogs allows as Templates for System:

YOURSERVER.YOURSITE.MED.VA.GOV

Select Display Sequence: ? ← enter ? to determine last sequence number

Display Sequence Value

1 DAY COMBINED TOBACCO USER

2 PATIENT EDUCATION ASSESSMENT

3 IMMUNIZATION CLINIC DIALOG

4 RD 580 NEU 562 DYSPHAGIA SCREENING TOOL

...412 NON VA CARE COORDINATION NOTE (D) ← last sequence

number on my list yours will be different Choose a number not on your list

Select Display Sequence: 413

Are you adding 413 as a new Display Sequence? Yes// YES

Display Sequence: 413// 413

Clinical Reminder Dialog: VA-ONCOLOGY BREAST reminder dialog NATIONAL

...OK? Yes// (Yes)

The National Oncology reminder dialogs can be used as templates and/or standalone notes. It is a local decision. Collaborate with Hematology/Oncology staff to determine how the dialogs will be used. The National Oncology Program Office will be releasing additional reminder dialogs so it is important to establish an appropriate location, such as shared folder with a separate folder for each type of cancer. Please follow local naming convention guidelines in place at your facility.

4. Creating a shared folder

Open template editor

Click + sign Shared Templates

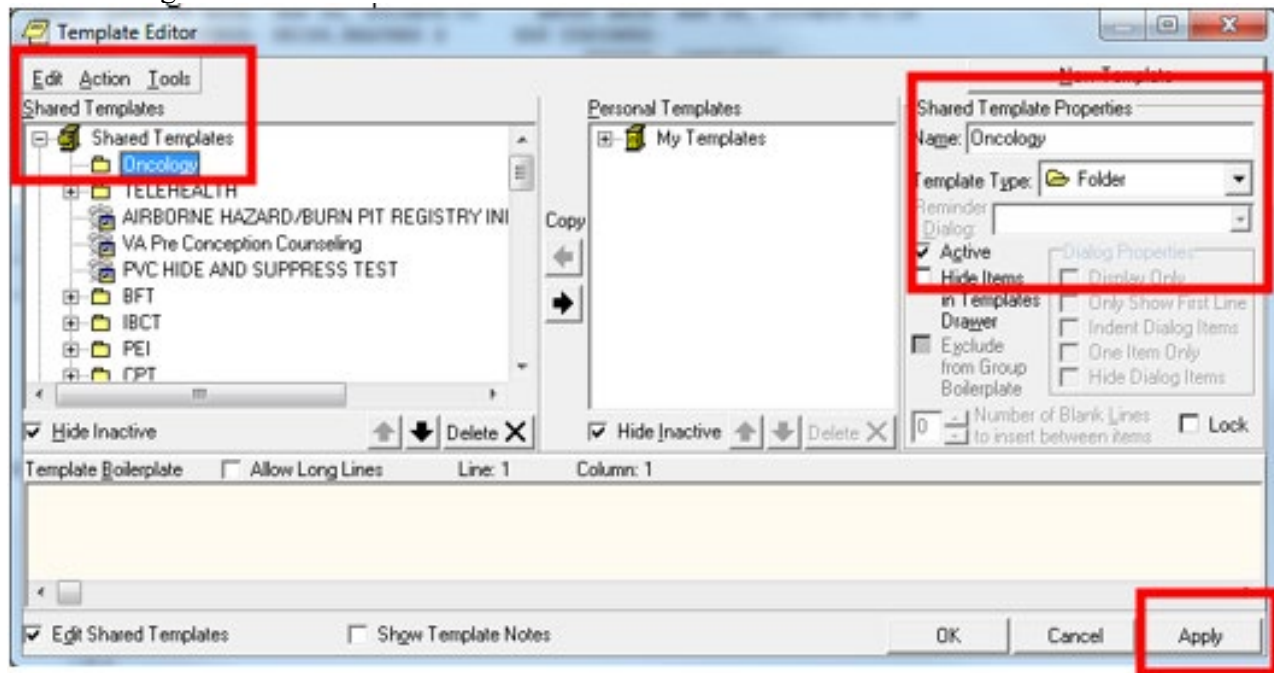
Click on New Template button

Type Oncology

Select folder in Template Type box

Click Apply lower right corner

EX: Creating Shared Folder



5. Creating a shared templates

Open template editor

Click + Shared templates

Locate Oncology folder and click on it

Click New Template button

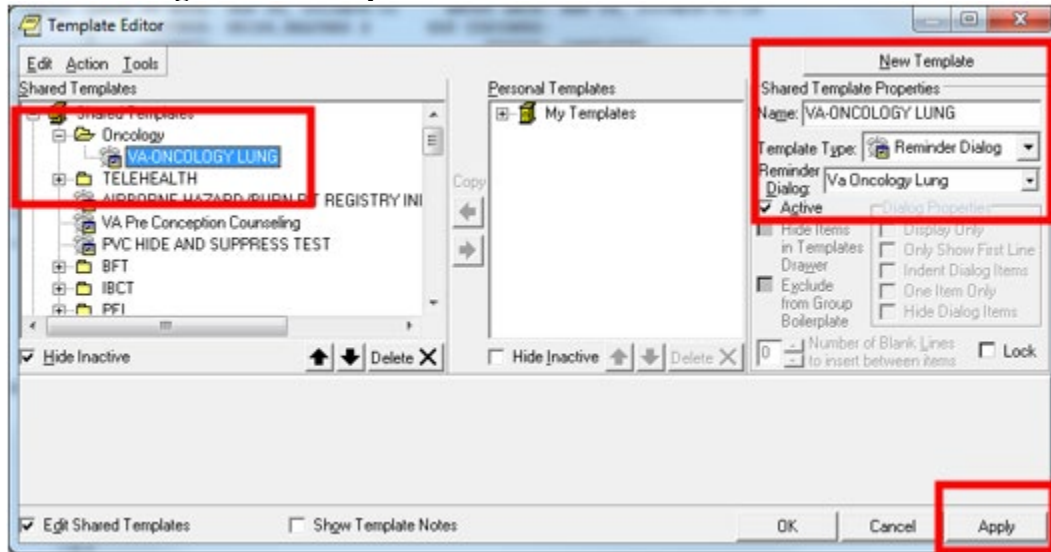
Type VA-ONCOLOGY

Select Reminder Dialog in template Type box

Type VA-ONCOLOGY in Reminder Dialog box

Click Apply lower right corner

EX: Creating Shared Template



6. Setup of Note titles

If your site uses the reminder dialogs as stand-alone notes, you will need to create a new note title for each dialog included in this update.

All note titles are to be mapped to the following VHA Enterprise Standard Title:
HEMATOLOGY AND ONCOLOGY NOTE.

Comprehensive information on Creating Document Definitions can be found beginning on page 47 of the [TIU/ASU Implementation Guide](#)

7. Linking progress note to reminder dialog

The following is an example of attaching a dialog to an associated note so that it can be used as a standalone note. You will need to repeat this step for all of the dialogs contained in this update.

From Template Editor
Edit Shared Template
Click + Document Titles
Click New Template button
Type VA-Oncology Lung in Name box
Click down arrow and Click on Reminder Dialog in Template Type Box
Type VA-ONCOLOGY in Reminder Dialog box
Type VA-Oncology Lung Template in Associated Title Box
Click Apply in lower right corner

EX: Linking progress note to dialog

